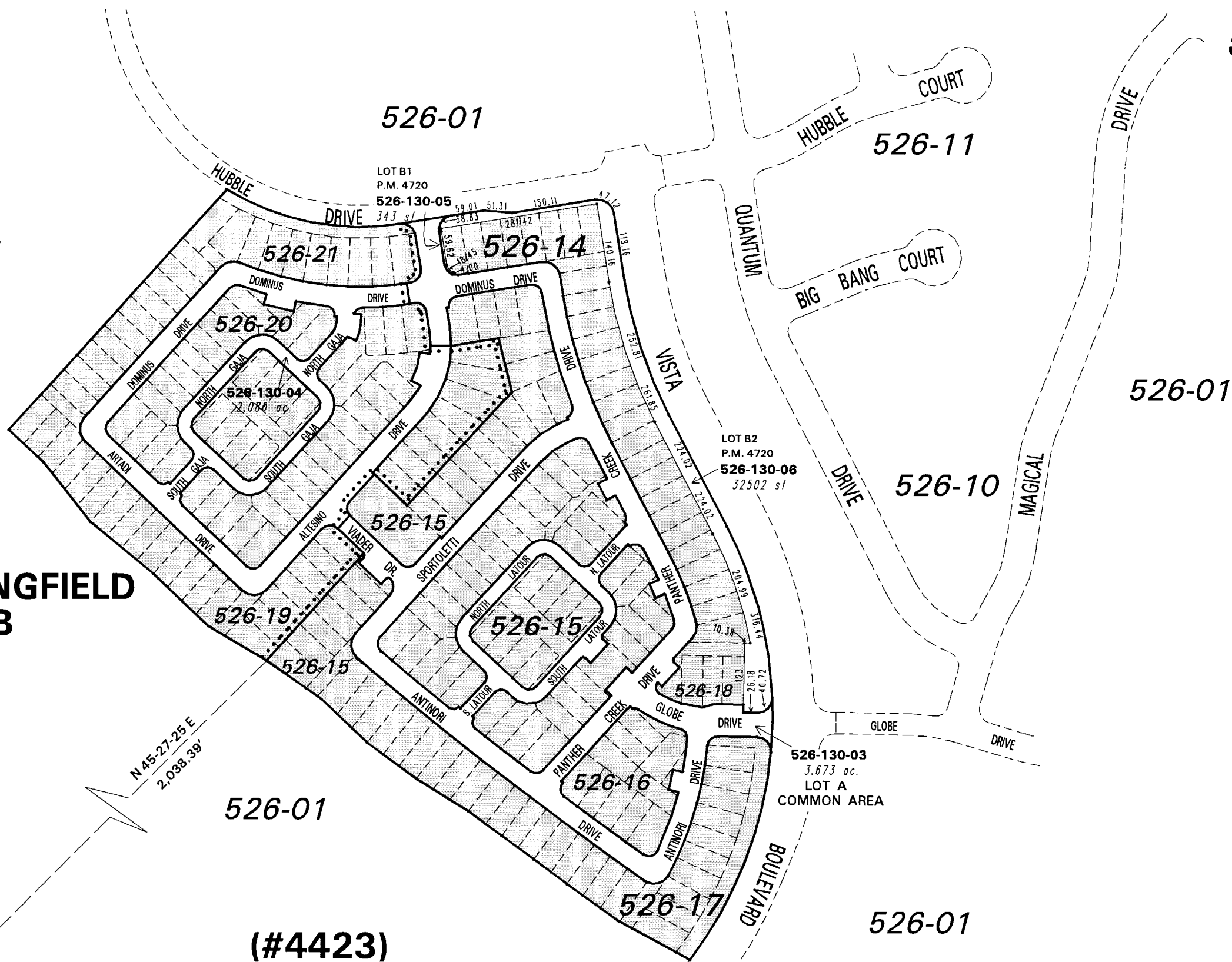


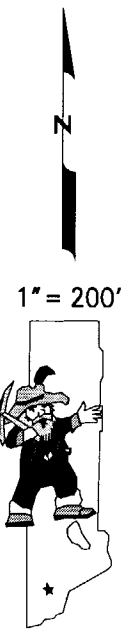
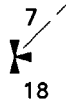
**(#4484)
THE FOOTHILLS AT WINGFIELD
VILLAGE 13B**

**(#4423)
THE FOOTHILLS AT WINGFIELD
VILLAGE 13A
PORTION OF SECTION 7
T20N - R21E**



N 14,896,930.73
E 2,316,822.73

N 45-27-25 E
2,038.39'



* ALL STREETS FOR TRACT MAPS 4423 & 4484 ARE PRIVATE.

This area previously shown on 526-01

Drawn by	PK 01/14/05
Revised	PK 6/14/05 NLH 02/27/07

NOTE: Areas of parcels which are less than 2 acres are shown in square feet.

NOTE: This map is prepared for the use of the Washoe County Assessor for assessment and illustrative purposes only. It does not represent a survey of the premises. No liability is assumed as to the sufficiency or the accuracy of the data delineated hereon.

Office of Washoe County Assessor, Nevada - Joshua G. Wilson