

(#4508)  
**FOOTHILL MEADOWS**  
POR. OF THE NW 1/4 OF SEC. 7,  
T20N - R21E

084-60

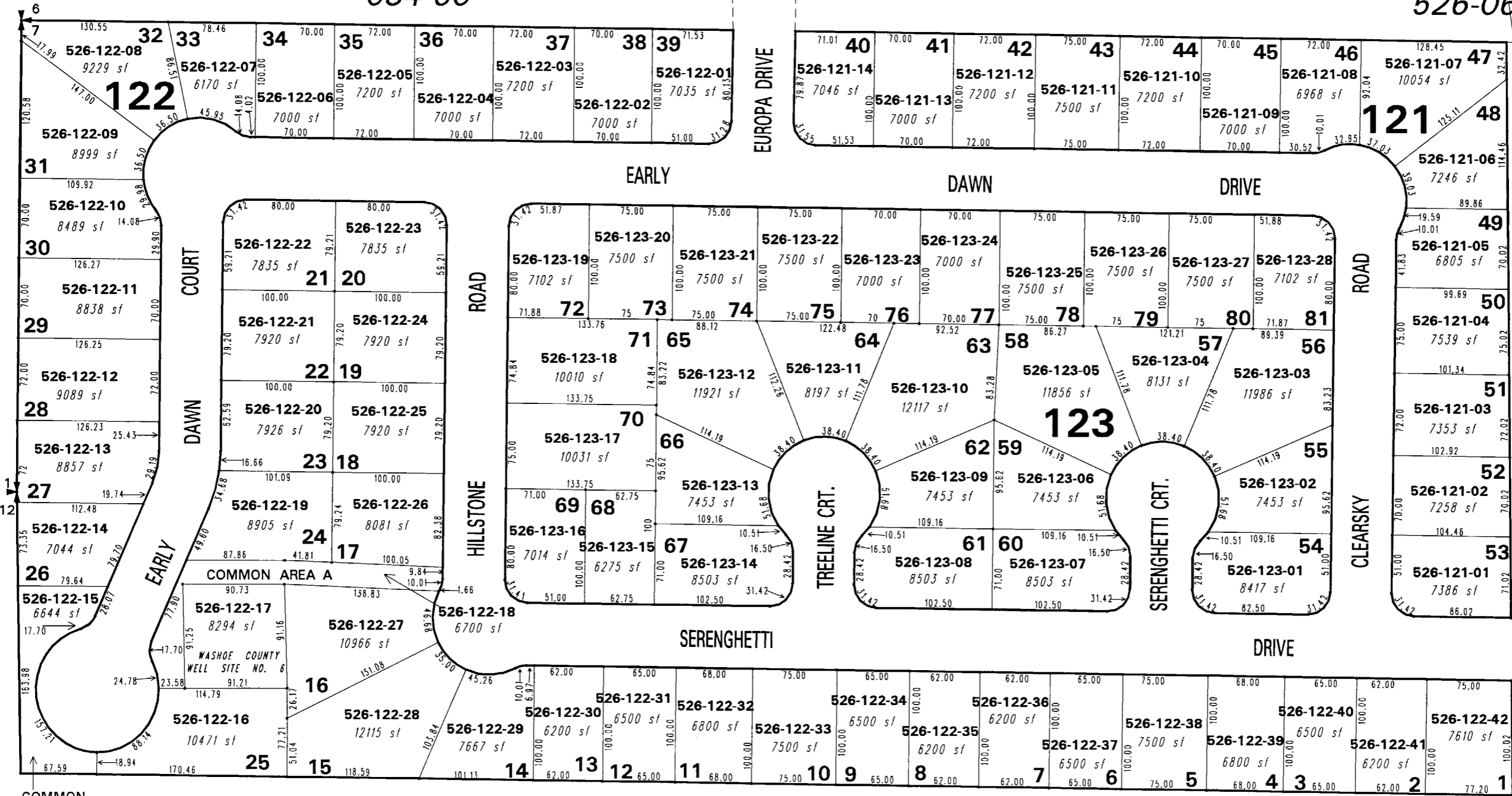
084-60

526-06

522-10

526-41

HUBBLE



526-22

526-08

526-40

NOTE: This map is prepared for the use of the Washoe County Assessor for assessment and illustrative purposes only. It does not represent a survey of the premises. No liability is assumed as to the sufficiency or the accuracy of the data delineated hereon.

Office of Washoe County Assessor, Nevada - Robert W. McGowan

This area previously shown on 084-05

Drawn by PK 08/02/05  
 Revised PK 1/20/06

NOTE: Areas of parcels which are less than 2 acres are shown in square feet.