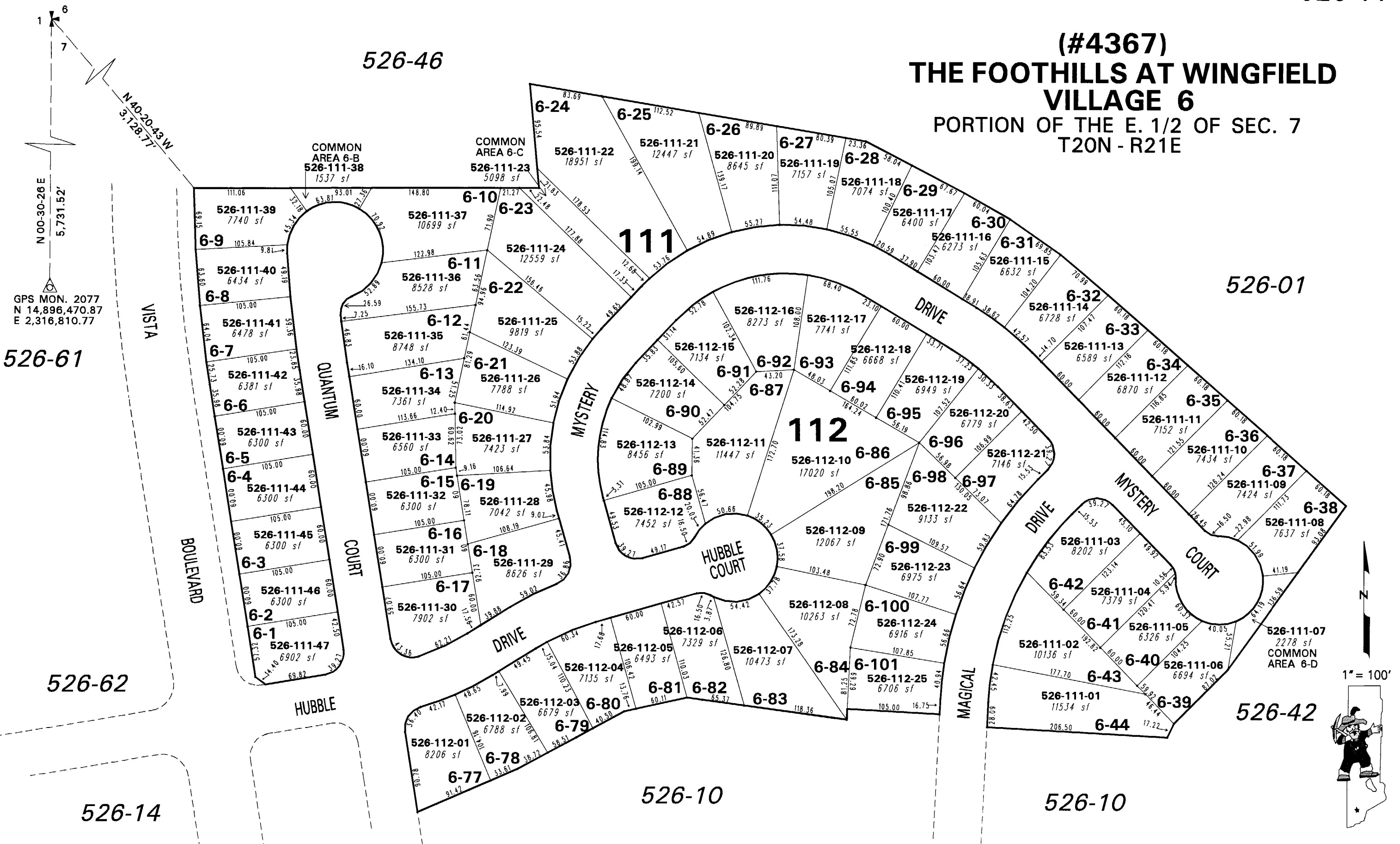


(#4367)
THE FOOTHILLS AT WINGFIELD VILLAGE 6
PORTION OF THE E. 1/2 OF SEC. 7
T20N - R21E



GPS MON. 2077
N 14,896,470.87
E 2,316,810.77

526-61

526-62

526-14

526-10

526-10

526-42

NOTE: This map is prepared for the use of the Washoe County Assessor for assessment and illustrative purposes only. It does not represent a survey of the premises. No liability is assumed as to the sufficiency or the accuracy of the data delineated hereon.

Office of Washoe County Assessor, Nevada - Robert W. McGowan

This area previously shown on 526-01

NOTE: Areas of parcels which are less than 2 acres are shown in square feet.

Drawn by PK 07/21/04
Revised PK 1/14/05 PK 2/16/06
PK 4/6/06 PK 6/28/06