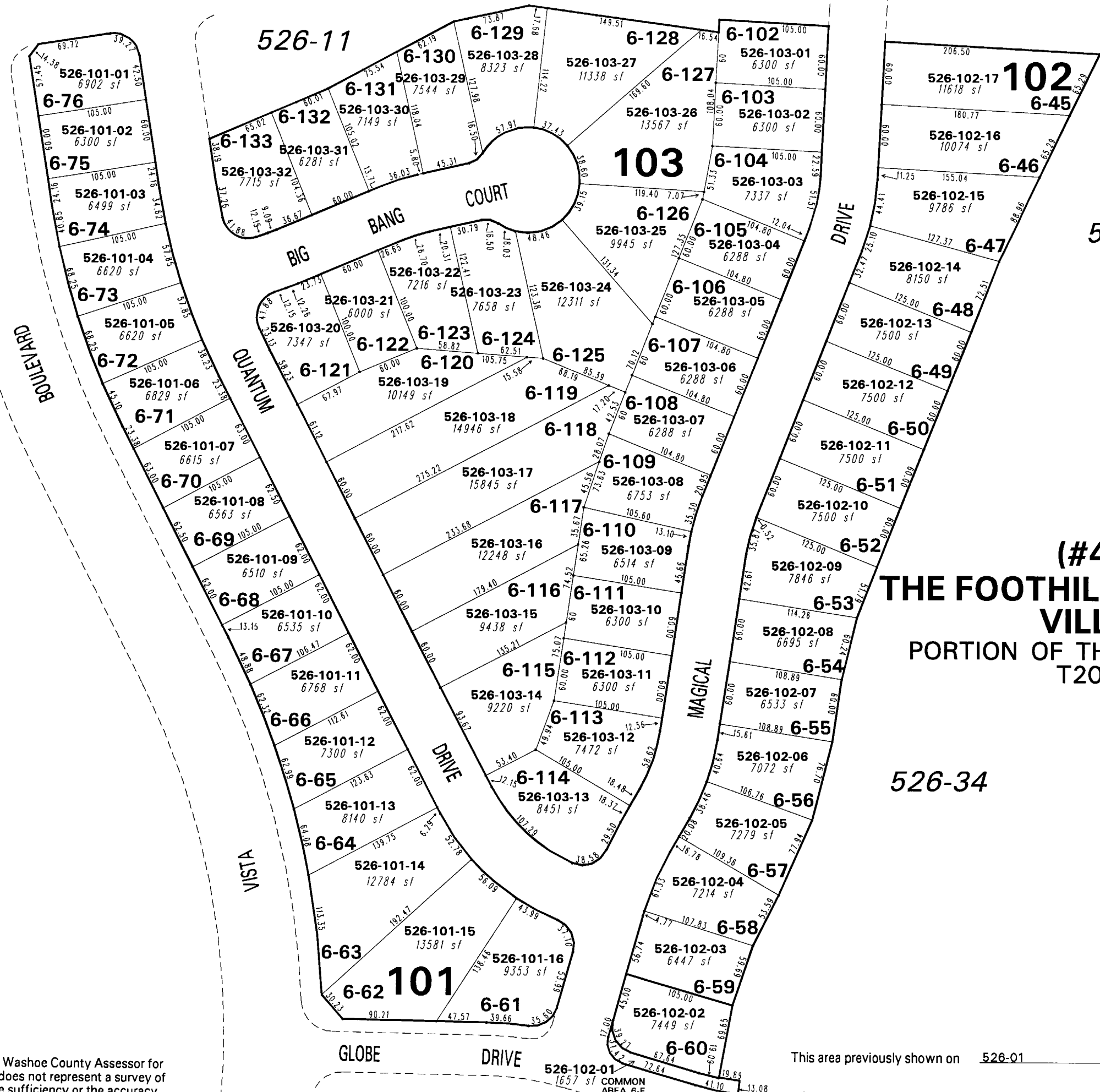


526-18

526-42

**(#4367)**  
**THE FOOTHILLS AT WINGFIELD VILLAGE 6**  
 PORTION OF THE E. 1/2 OF SEC. 7  
 T20N - R21E

526-34



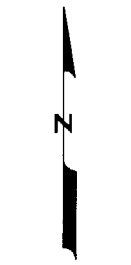
NOTE: This map is prepared for the use of the Washoe County Assessor for assessment and illustrative purposes only. It does not represent a survey of the premises. No liability is assumed as to the sufficiency or the accuracy of the data delineated hereon.

Office of Washoe County Assessor, Nevada - Robert W. McGowan

This area previously shown on 526-01

NOTE: Areas of parcels which are less than 2 acres are shown in square feet.

Drawn by PK 07/20/04  
 Revised PK 1/14/05 PK 10/25/05  
 PK 2/16/06



1" = 100'

