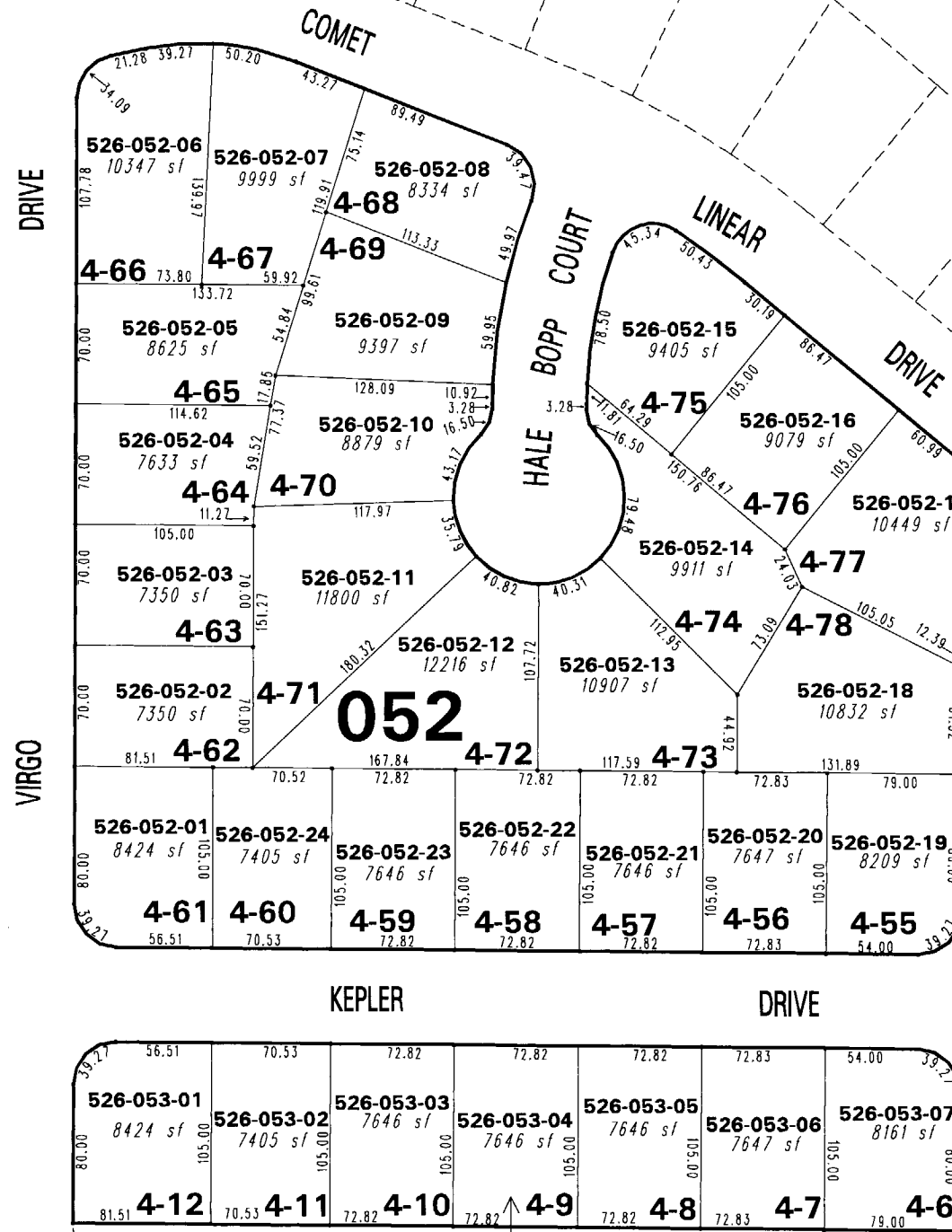
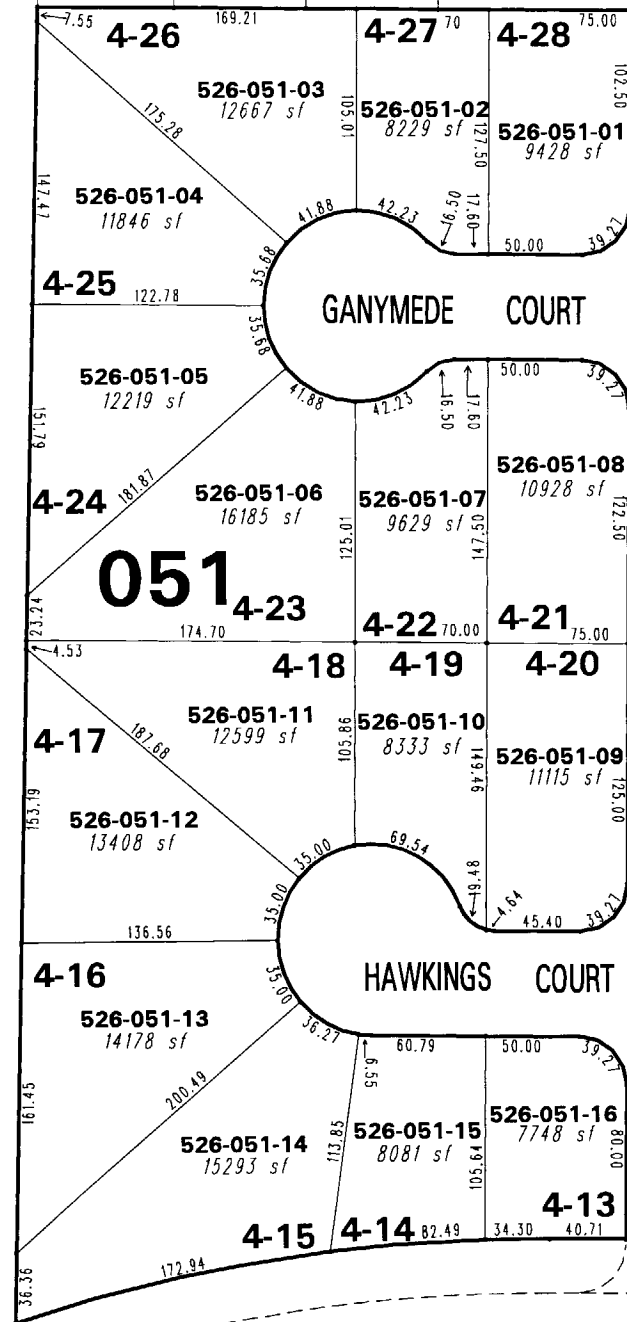


522-16

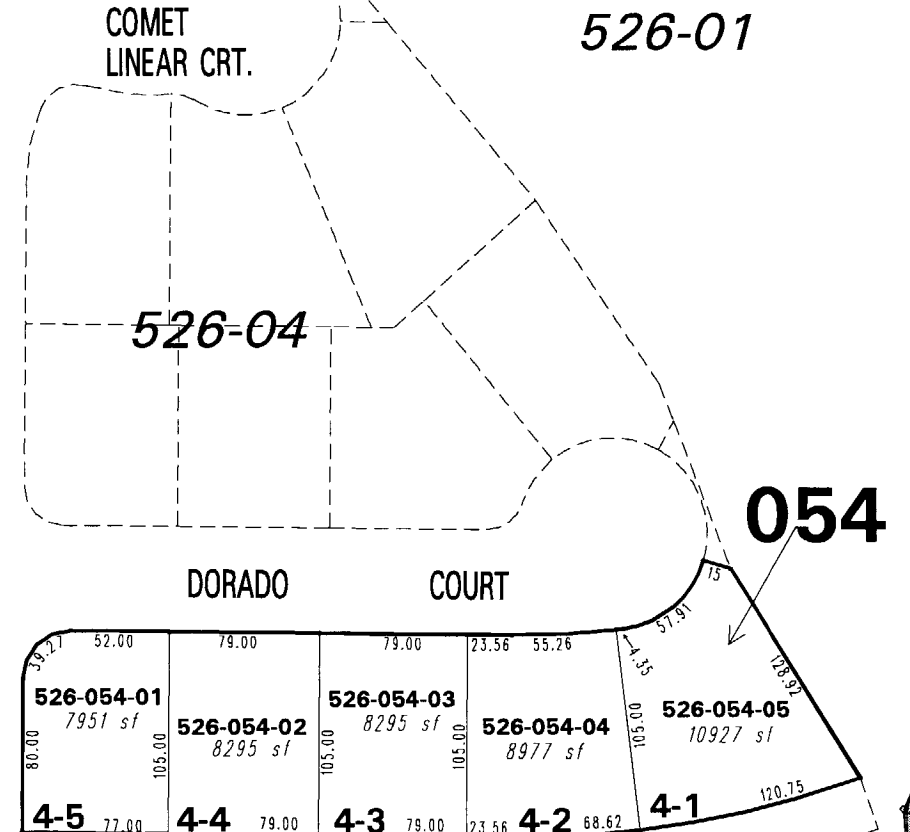
522-15

522-14

526-04



(#4366)  
**THE FOOTHILLS AT WINGFIELD VILLAGE 4**  
 PORTION OF THE SW 1/4 SEC. 7  
 T20N - R21E



VISTA 053

BOULEVARD

084-01

Office of Washoe County Assessor, Nevada - Robert W. McGowan

This area previously shown on 084-56,526-01

NOTE: Areas of parcels which are less than 2 acres are shown in square feet.

Drawn by PK 07/15/04  
 Revised \_\_\_\_\_

NOTE: This map is prepared for the use of the Washoe County Assessor for assessment and illustrative purposes only. It does not represent a survey of the premises. No liability is assumed as to the sufficiency or the accuracy of the data delineated hereon.

