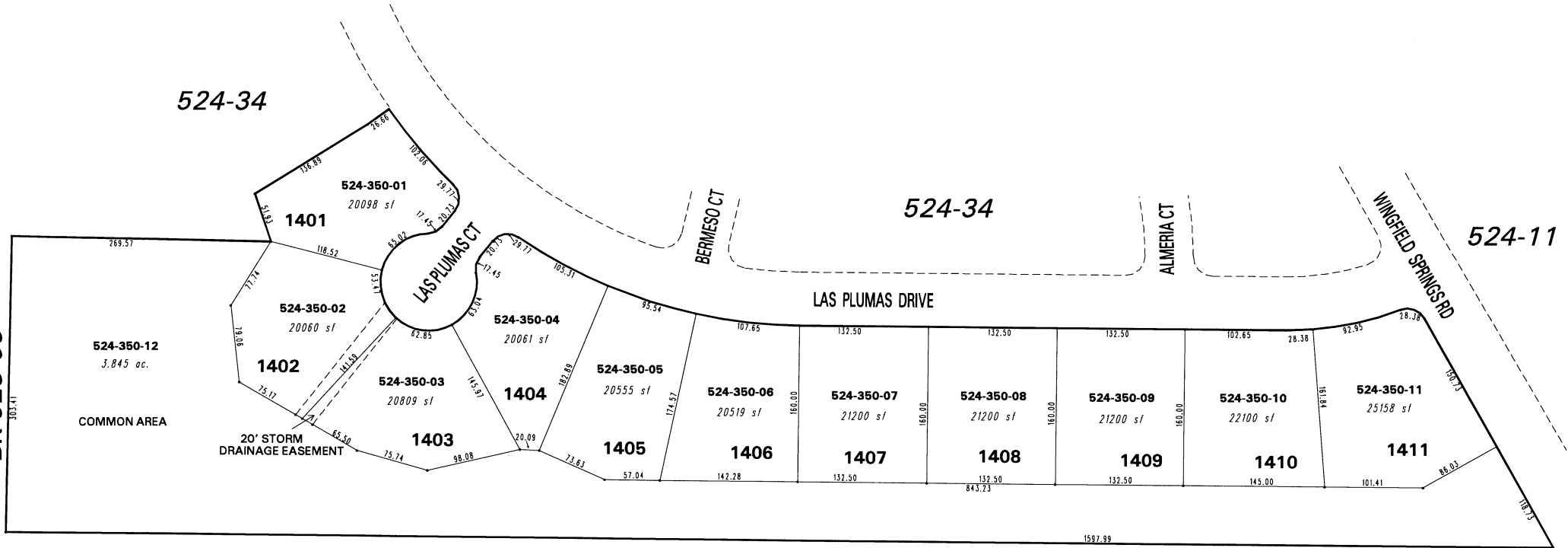


524-34

524-34

524-11

BK 528-03



524-41

(#3818)
CIMARRON UNIT 14
 A PLANNED RESIDENTIAL COMMUNITY
 PORTION OF NW 1/4 SECTION 1
 T20N - R20E



1" = 100'



NOTE: This map is prepared for the use of the Washoe County Assessor for assessment and illustrative purposes only. It does not represent a survey of the premises. No liability is assumed as to the sufficiency or the accuracy of the data delineated hereon.

Office of Washoe County Assessor, Nevada - Robert W. McGowan

This area previously shown on 524-01

NOTE: Areas of parcels which are less than 2 acres are shown in square feet.

Drawn by DSR 05/03/00
 Revised KSB 6/17/03