

(#4274)
**WINGFIELD SPRINGS
UNIT TWENTY-SIX A
UNIT 2**

BOOK 528

POR. NE 1/4 SECTION 14
T20N - R20E

VISTA BOULEVARD

(#4213)
**WINGFIELD SPRINGS
UNIT TWENTY-SIX A**

Assessor's Map Number

520-32

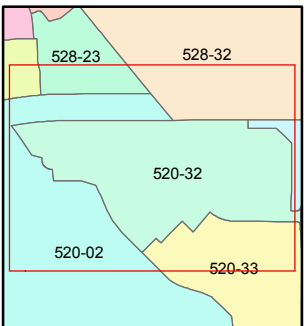
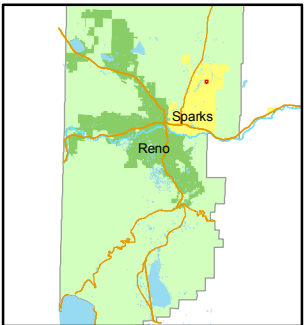
STATE OF NEVADA
**WASHOE COUNTY
ASSESSOR'S OFFICE**
Joshua G. Wilson, Assessor

1001 East Ninth Street
Building D
Reno, Nevada 89512
(775) 328-2231



Feet
0 25 50 75 100

1 inch = 100 feet



created by: KSB 9/15/09

last updated: _____

area previously shown on map(s)

520-02

NOTE: This map was prepared for the use of the Washoe County Assessor for assessment and illustrative purposes only. It does not represent a survey of the premises. No liability is assumed as to the sufficiency or accuracy of the data delineated hereon.

