

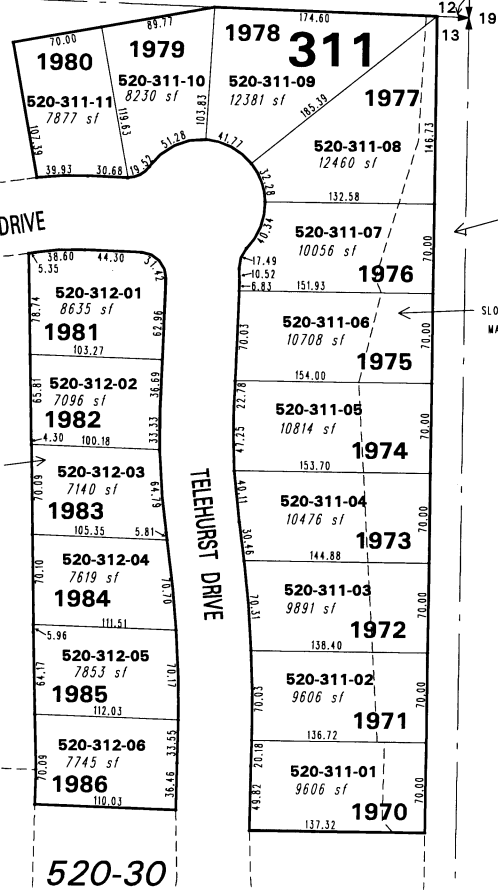
BOOK 522

VISTA BOULEVARD

(#4194)
WINGFIELD SPRINGS
UNIT NINETEEN-B
PHASE TWO

POR. N 1/2 SECTION 13
T20N - R20E

587-56-27E
26.01



520-02

SLOPE, ACCESS, AND MAINT. EASEMENT

312

520-23

BOOK 84

520-30

BANESTONE ROAD



1" = 100'



NOTE: This map is prepared for the use of the Washoe County Assessor for assessment and illustrative purposes only. It does not represent a survey of the premises. No liability is assumed as to the sufficiency or the accuracy of the data delineated hereon.

Office of Washoe County Assessor, Nevada - Robert W. McGowan

This area previously shown on 520-16

NOTE: Areas of parcels which are less than 2 acres are shown in square feet.

Drawn by HCS 04/23/03
 Revised by _____

