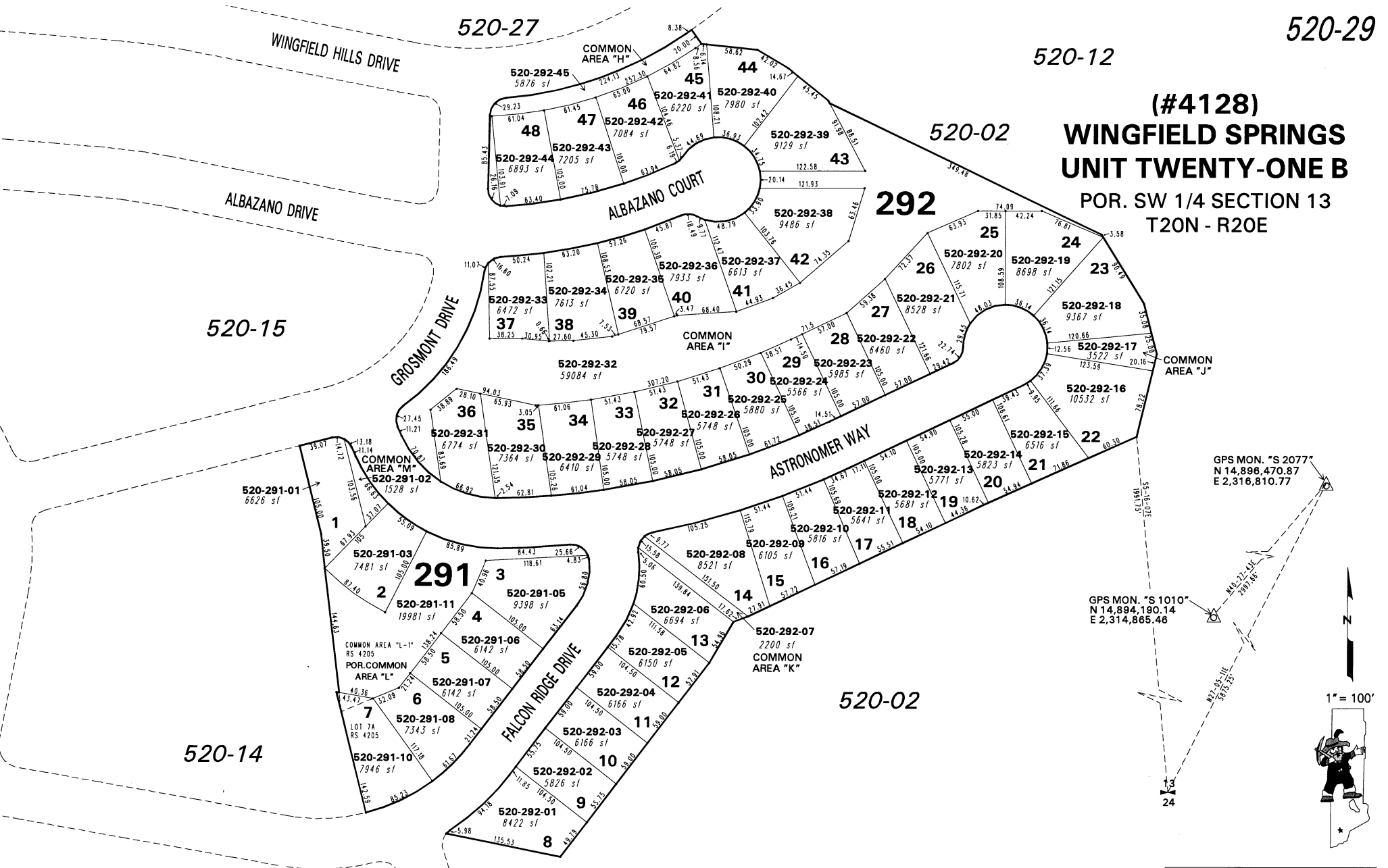


520-29

520-12

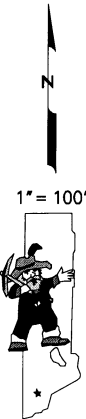
520-27

**(#4128)
WINGFIELD SPRINGS
UNIT TWENTY-ONE B**
POR. SW 1/4 SECTION 13
T20N - R20E



GPS MON. "S 2077"
N 14,896,470.87
E 2,316,810.77

GPS MON. "S 1010"
N 14,894,190.14
E 2,314,865.46



NOTE: This map is prepared for the use of the Washoe County Assessor for assessment and illustrative purposes only. It does not represent a survey of the premises. No liability is assumed as to the sufficiency or the accuracy of the data delineated hereon.

Office of Washoe County Assessor, Nevada - Robert W. McGowan

This area previously shown on 520-02

NOTE: Areas of parcels which are less than 2 acres are shown in square feet.

Drawn by HCS 11/07/02
Revised HCS 3/18/03