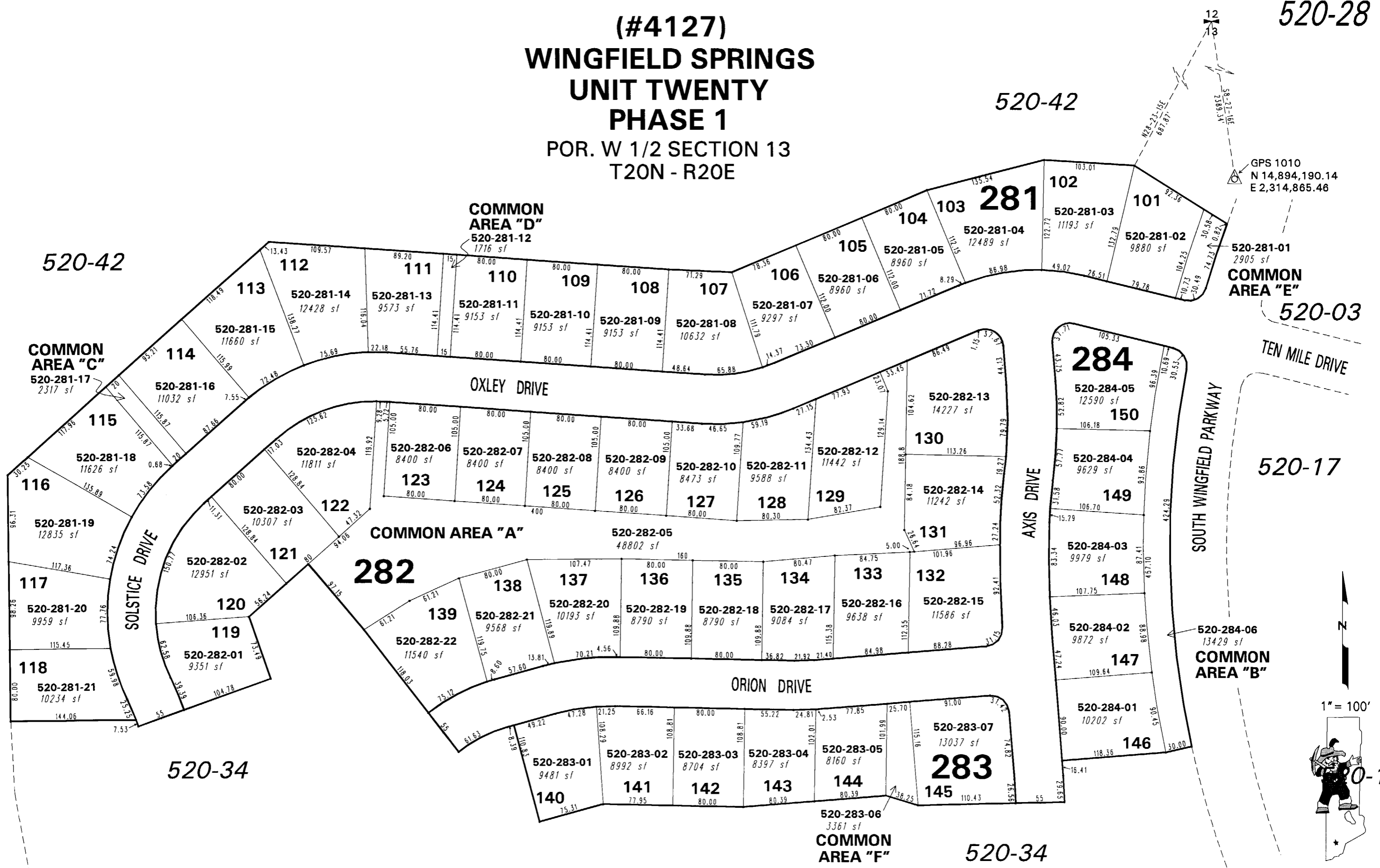


(#4127)
WINGFIELD SPRINGS
UNIT TWENTY
PHASE 1
POR. W 1/2 SECTION 13
T20N - R20E



GPS 1010
N 14,894,190.14
E 2,314,865.46

520-42

520-42

COMMON AREA "C"
520-281-17
2317 sf

COMMON AREA "D"
520-281-12
1716 sf

COMMON AREA "E"
520-281-01
2905 sf

520-03

TEN MILE DRIVE

520-17

SOUTH WINGFIELD PARKWAY

COMMON AREA "B"
520-284-06
13429 sf

520-34

COMMON AREA "F"
520-283-06
3361 sf

520-34

1" = 100'



NOTE: This map is prepared for the use of the Washoe County Assessor for assessment and illustrative purposes only. It does not represent a survey of the premises. No liability is assumed as to the sufficiency or the accuracy of the data delineated hereon.

Office of Washoe County Assessor, Nevada - Robert W. McGowan

This area previously shown on 520-02

Drawn by HCS 11/06/02
Revised HCS 7/28/03 PK 11/21/05

NOTE: Areas of parcels which are less than 2 acres are shown in square feet.