

VISTA BOULEVARD

BOOK 522

12  
13

520-31

(#4064)

**WINGFIELD SPRINGS  
UNIT NINETEEN-A  
PHASE TWO**

POR. N 1/2 SECTION 13  
T20N - R20E

520-30

520-03

520-30

520-18

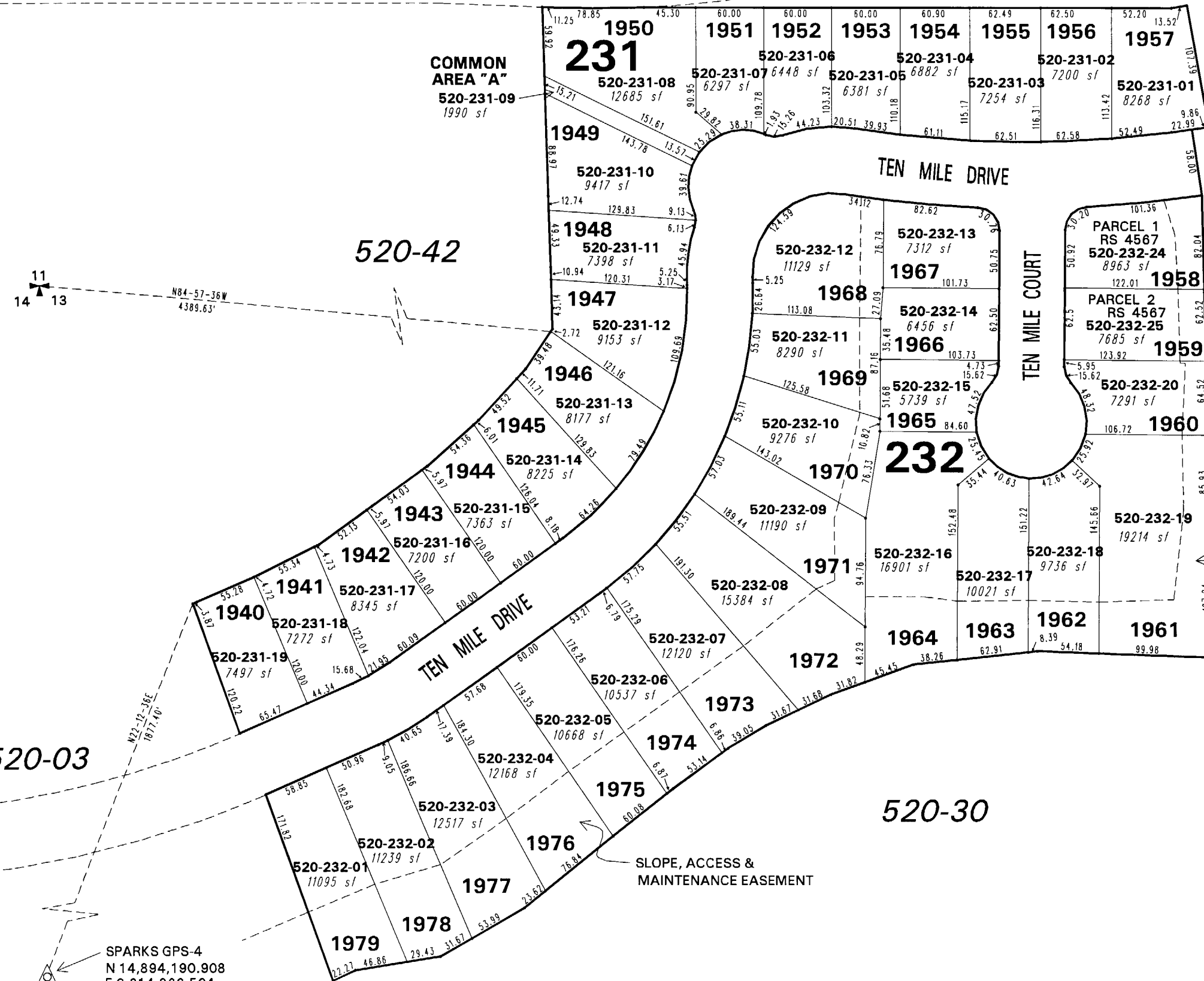
Office of Washoe County Assessor, Nevada - Robert W. McGowan

This area previously shown on 520-02

NOTE: Areas of parcels which are less than 2 acres are shown in square feet.

Drawn by HCS 04/10/02  
Revised HCS 4/23/03 PK 6/30/05  
PK 11/21/05

NOTE: This map is prepared for the use of the Washoe County Assessor for assessment and illustrative purposes only. It does not represent a survey of the premises. No liability is assumed as to the sufficiency or the accuracy of the data delineated hereon.



SPARKS GPS-4  
N 14,894,190.908  
E 2,314,866.524

1" = 100'