

(#3871)
**WINGFIELD SPRINGS UNIT NINETEEN-B
PHASE ONE**
PORTION OF THE N 1/2 OF SECTION 13, T20N - R20E

520-28

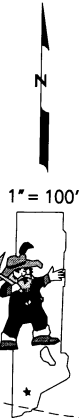
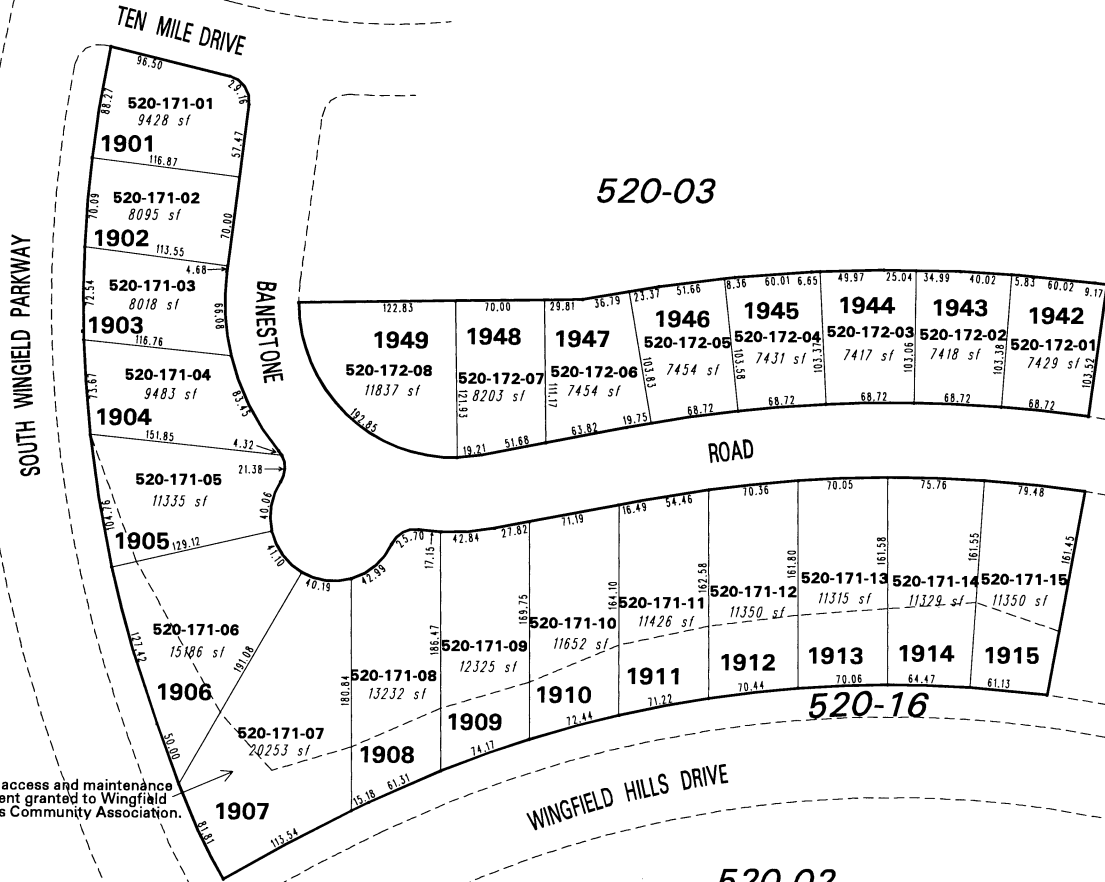
520-03

520-18

520-34

520-02

Slope, access and maintenance
easement granted to Wingfield
Springs Community Association.



NOTE: This map is prepared for the use of the Washoe County Assessor for assessment and illustrative purposes only. It does not represent a survey of the premises. No liability is assumed as to the sufficiency or the accuracy of the data delineated hereon.

Office of Washoe County Assessor, Nevada - Robert W. McGowan

This area previously shown on 520-02

NOTE: Areas of parcels which are less than 2 acres are shown in square feet.

Drawn by	CFB 9/27/00
Revised	HCS 11/12/02 HCS 7/28/03