

520-32

520-33

WINGFIELD HILLS ROAD

BLACK CINDER CT

520-10

LAWRY DRIVE

(PRIVATE / HOA COMMON AREA)

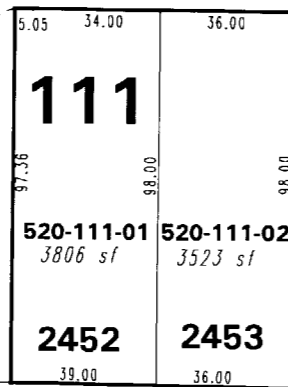
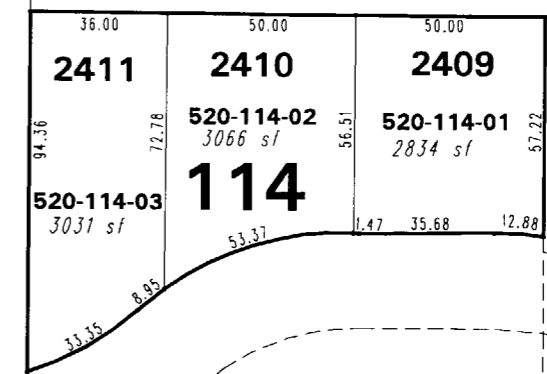
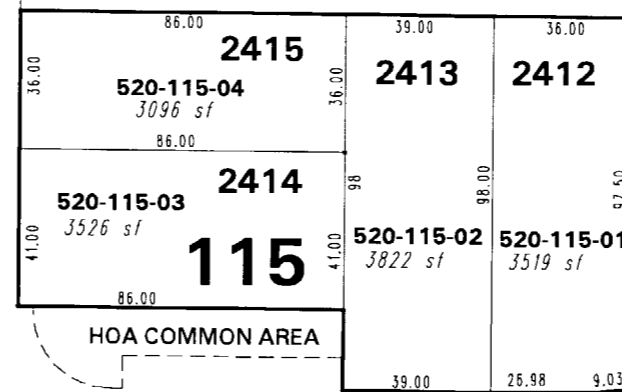
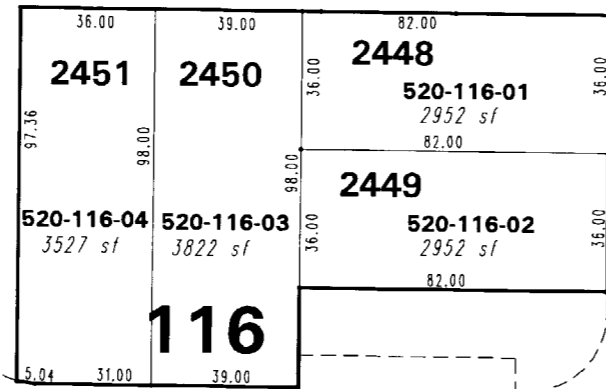
HOA COMMON AREA

520-04

INGLESTON DRIVE

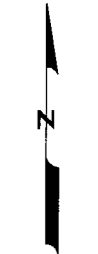
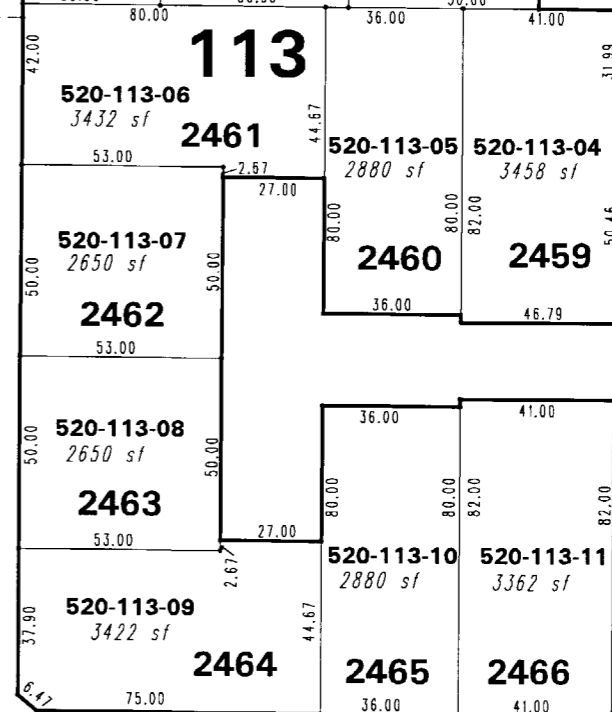
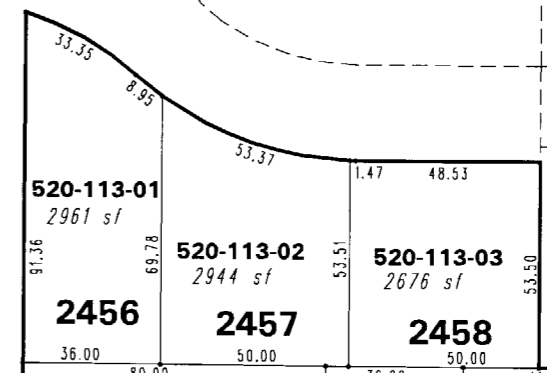
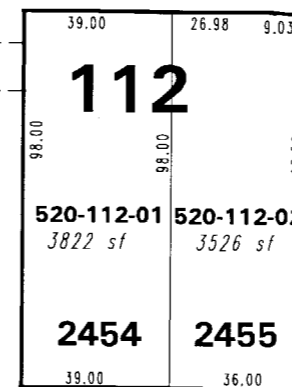
520-22

**(#3585)
WINGFIELD SPRINGS
UNIT 24-B**
A PLANNED COMMUNITY
PORTION OF NW 1/4 SECTION 13
T20N - R 20E



HOA COMMON AREA

HOA COMMON AREA



1" = 50'



NOTE: This map is prepared for the use of the Washoe County Assessor for assessment and illustrative purposes only. It does not represent a survey of the premises. No liability is assumed as to the sufficiency or the accuracy of the data delineated herein.

Office of Washoe County Assessor, Nevada - Joshua G. Wilson

This area previously shown on 522-71

NOTE: Areas of parcels which are less than 2 acres are shown in square feet.

Drawn by DSR 09/05/98*
Revised CFB 12/3/99 HCS 9/24/01
HCS 12/17/02 HCS 6/16/03 NLH 01/25/07