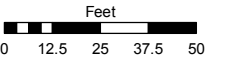
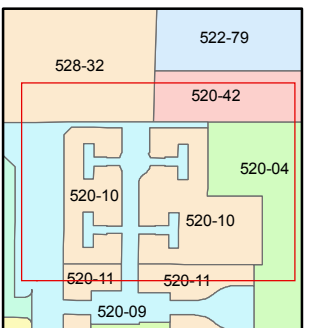
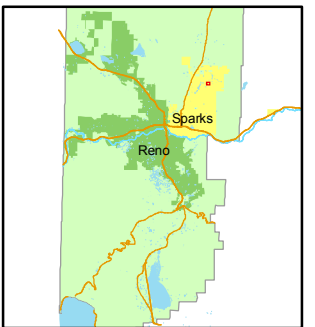


STATE OF NEVADA
WASHOE COUNTY
ASSESSOR'S OFFICE
Joshua G. Wilson, Assessor

1001 East Ninth Street
Building D
Reno, Nevada 89512
(775) 328-2231



1 inch = 50 feet



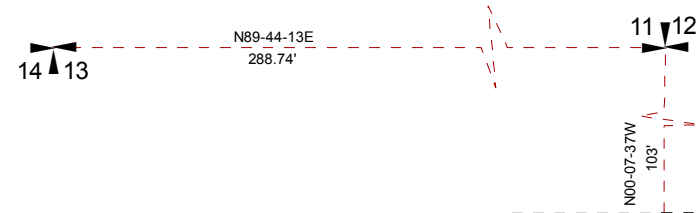
created by: KSB 9/14/09

last updated: _____

area previously shown on map(s)

522-70

NOTE: This map was prepared for the use of the Washoe County Assessor for assessment and illustrative purposes only. It does not represent a survey of the premises. No liability is assumed as to the sufficiency or accuracy of the data delineated hereon.

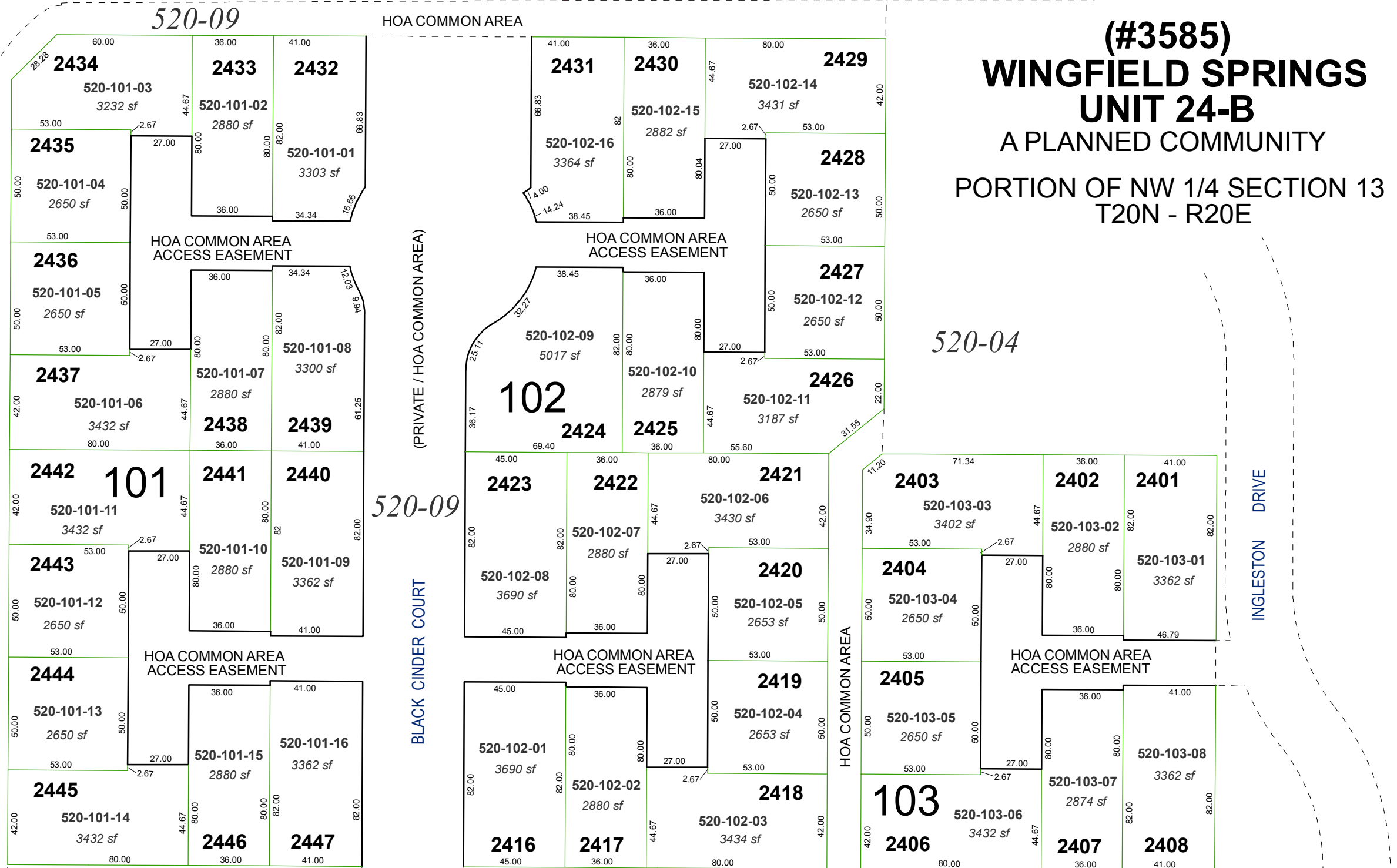


VISTA BOULEVARD

WINGFIELD HILLS ROAD

520-32

INGLESTON DRIVE



(#3585)
WINGFIELD SPRINGS
UNIT 24-B
A PLANNED COMMUNITY
PORTION OF NW 1/4 SECTION 13
T20N - R20E

520-09

520-04

520-11