

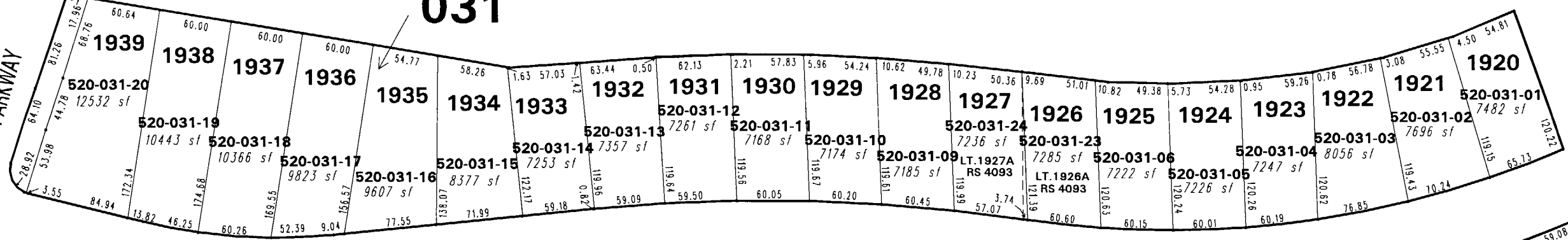
520-42

031

520-28

SOUTH WINGFIELD PARKWAY

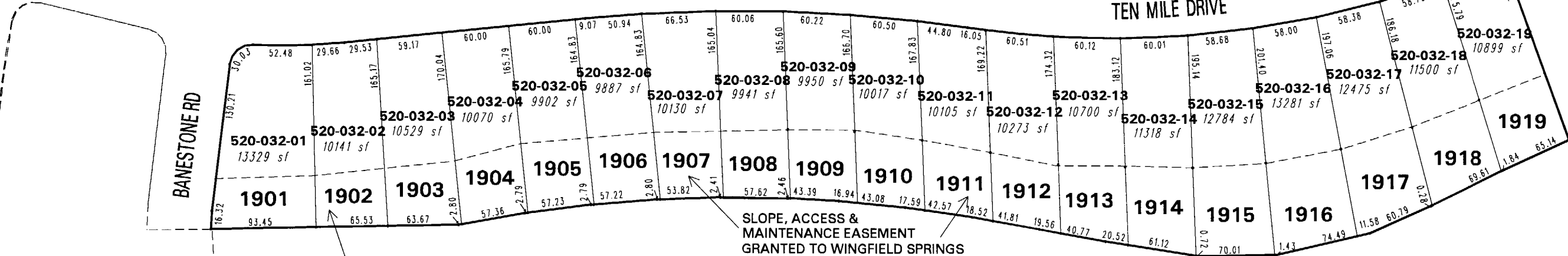
COMMON AREA A
520-031-21
3017 sf



520-23

TEN MILE DRIVE

BANESTONE RD



SLOPE, ACCESS & MAINTENANCE EASEMENT GRANTED TO WINGFIELD SPRINGS COMMUNITY ASSOCIATION

520-17

032

520-18

520-16

(#3684)
WINGFIELD SPRINGS UNIT 19-A
PHASE 1
 PORTION OF N 1/2 OF SECTION 13
 T20N - R20E

SPARKS GPS-3
 MODIFIED GRID
 N: 14,892,533.660
 E: 2,307,635.722

SPARKS GPS-4
 MODIFIED GRID
 N: 14,894,190.908
 E: 2,314,866.524



1" = 100'



NOTE: This map is prepared for the use of the Washoe County Assessor for assessment and illustrative purposes only. It does not represent a survey of the premises. No liability is assumed as to the sufficiency or the accuracy of the data delineated hereon.

Office of Washoe County Assessor, Nevada - Robert W. McGowan

This area previously shown on 522-80

NOTE: Areas of parcels which are less than 2 acres are shown in square feet.

Drawn by DSR 05/26/99
 Revised HCS 11/12/02 PK 11/20/05