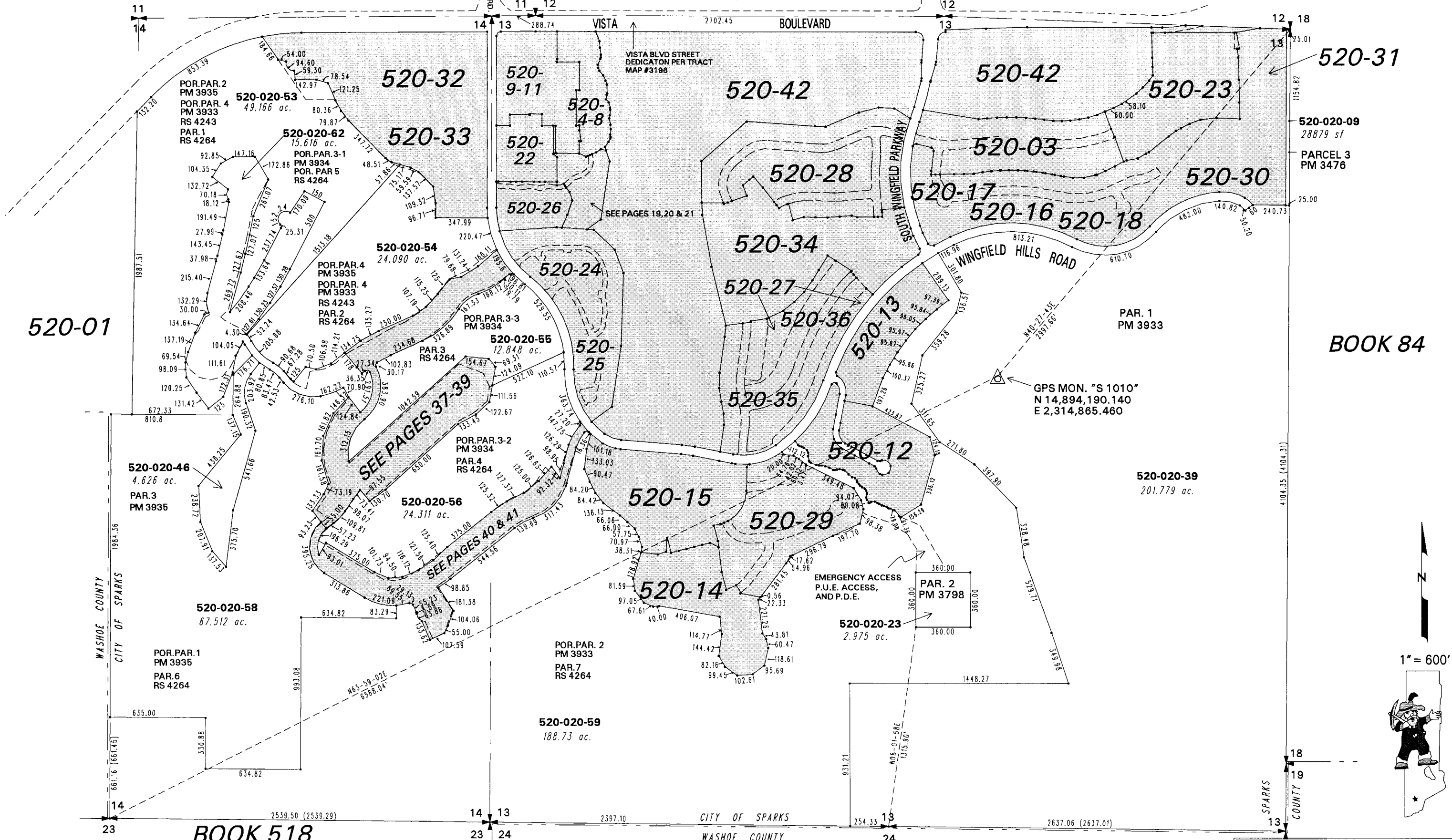


SECTION 13, T20N - R20E

BOOK 528

BOOK 522

N. WINGFIELD PKWY



520-01

520-31

520-02-09  
28879 sf  
PARCEL 3  
PM 3476

BOOK 84

GPS MON. "S 1010"  
N 14,894,190.140  
E 2,314,865.460

PAR. 1  
PM 3933

520-02-39  
201.779 ac.

520-02-46  
4.626 ac.  
PAR. 3  
PM 3935

520-02-58  
67.512 ac.

POR. PAR. 1  
PM 3935  
PAR. 6  
RS 4264

BOOK 518

SEE PAGES 37-39

SEE PAGES 40 & 41

520-02-59  
188.73 ac.

POR. PAR. 2  
PM 3933  
PAR. 7  
RS 4264

CITY OF SPARKS  
WASHOE COUNTY

BOOK 512

This area previously shown on 522-08

NOTE: This map is prepared for the use of the Washoe County Assessor for assessment and illustrative purposes only. It does not represent a survey of the premises. No liability is assumed as to the sufficiency or the accuracy of the data delineated hereon.

Office of Washoe County Assessor, Nevada - Robert W. McGowan

NOTE: Areas of parcels which are less than 2 acres are shown in square feet.

Drawn by KL 1/22/96  
 Revised PK 11/21/05

