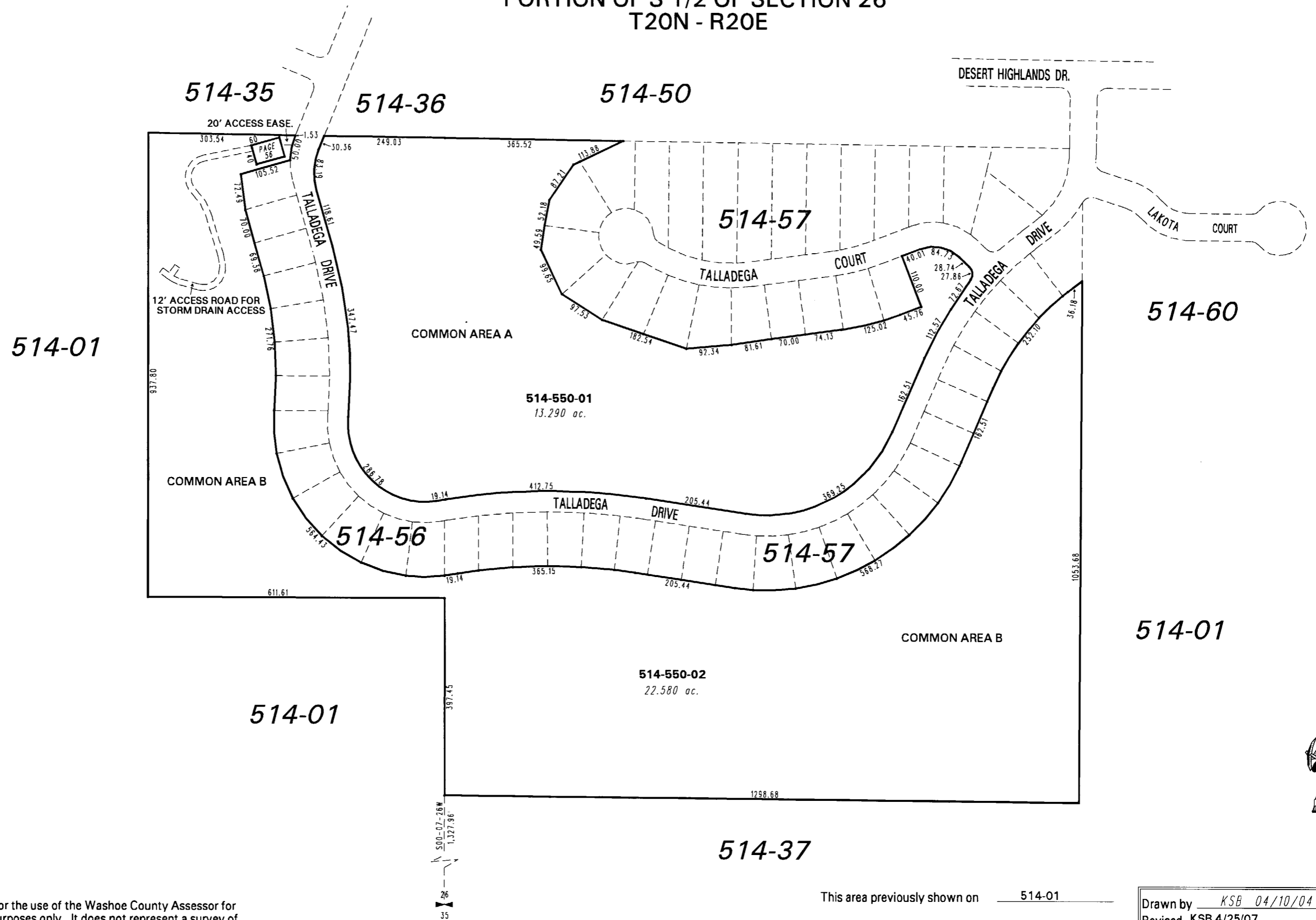


(#4308)
LIBERTY HILLS ESTATES
PORTION OF S 1/2 OF SECTION 26
T20N - R20E



NOTE: This map is prepared for the use of the Washoe County Assessor for assessment and illustrative purposes only. It does not represent a survey of the premises. No liability is assumed as to the sufficiency or the accuracy of the data delineated hereon.

Office of Washoe County Assessor, Nevada - Joshua G. Wilson

This area previously shown on 514-01

NOTE: Areas of parcels which are less than 2 acres are shown in square feet.

Drawn by KSB 04/10/04
Revised KSB 4/25/07