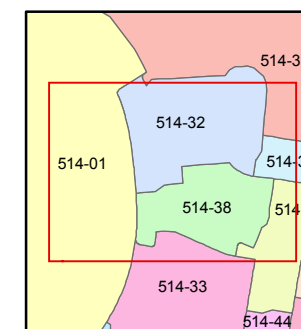
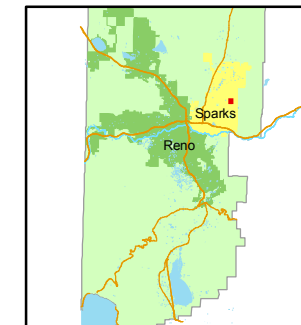


1 inch = 100 feet



created by: KSB 6/28/11

last updated: _____

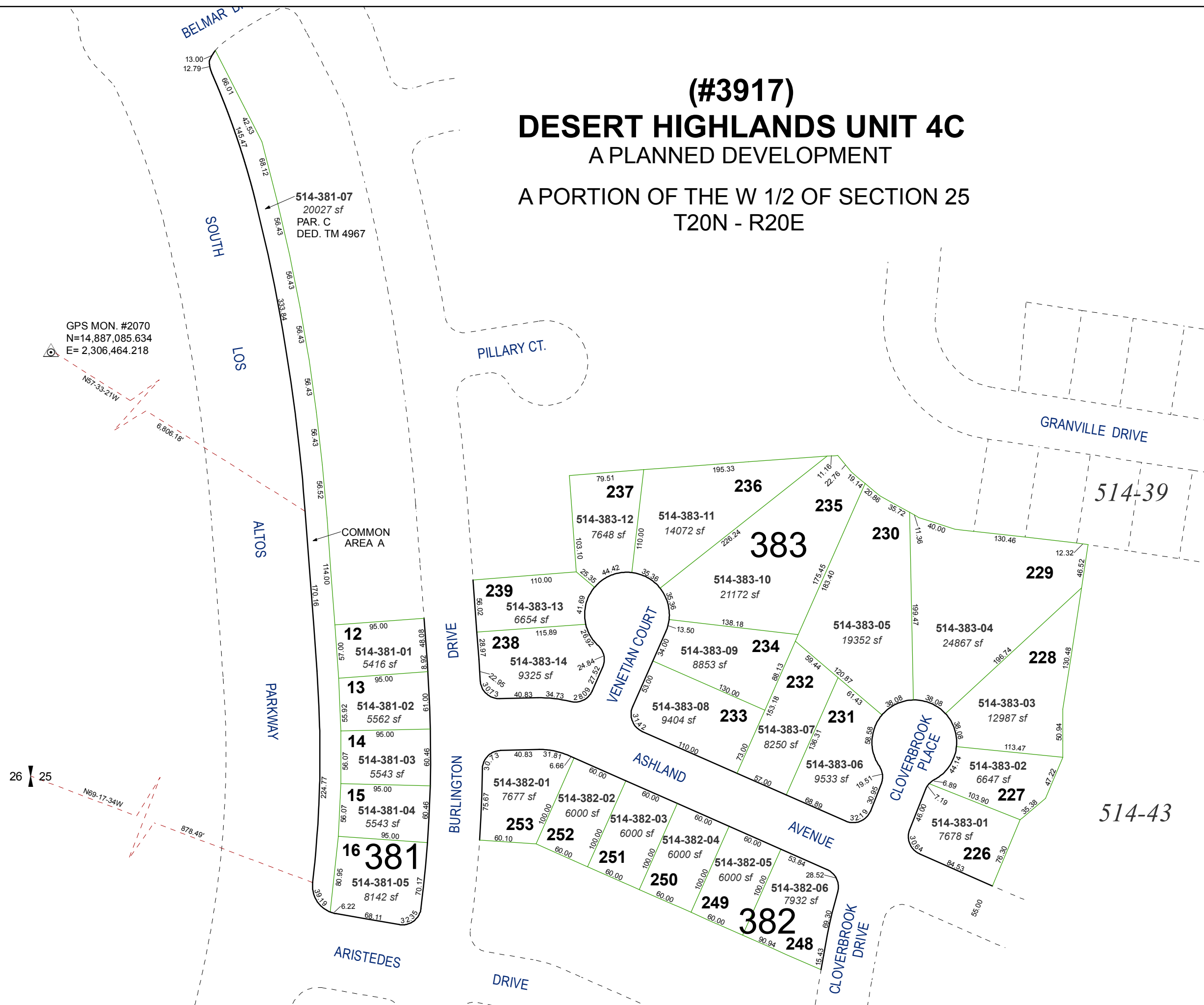
area previously shown on map(s)

514-01, 514-34

NOTE: This map was prepared for the use of the Washoe County Assessor for assessment and illustrative purposes only. It does not represent a survey of the premises. No liability is assumed as to the sufficiency or accuracy of the data delineated hereon.

(#3917)
DESERT HIGHLANDS UNIT 4C
A PLANNED DEVELOPMENT

A PORTION OF THE W 1/2 OF SECTION 25
T20N - R20E



26 | 25

N69-17-34W

878.49'

GPS MON. #2070
N=14,887,085.634
E=2,306,464.218

N57-33-21W

6,806.18'

BELMAR DRIVE

SOUTH

LOS

ALTOS

PARKWAY

ARISTEDES

PILLARY CT.

DRIVE

BURLINGTON

DRIVE

VENETIAN COURT

ASHLAND

AVENUE

CLOVERBROOK PLACE

CLOVERBROOK DRIVE

GRANVILLE DRIVE

514-39

514-43

514-381-07
20027 sf
PAR. C
DED. TM 4967

COMMON AREA A

12
514-381-01
5416 sf

13
514-381-02
5562 sf

14
514-381-03
5543 sf

15
514-381-04
5543 sf

16
514-381-05
8142 sf

381

237
514-383-12
7648 sf

236
514-383-11
14072 sf

383

235
514-383-10
21172 sf

230
514-383-05
19352 sf

229
514-383-04
24867 sf

239
514-383-13
6654 sf

238
514-383-14
9325 sf

234
514-383-09
8853 sf

233
514-383-08
9404 sf

232
514-383-07
8250 sf

231
514-383-06
9533 sf

228
514-383-03
12987 sf

227
514-383-02
6647 sf

226
514-383-01
7678 sf

253
514-382-01
7677 sf

252
514-382-02
6000 sf

251
514-382-03
6000 sf

250
514-382-04
6000 sf

249
514-382-05
6000 sf

248
514-382-06
7932 sf

382