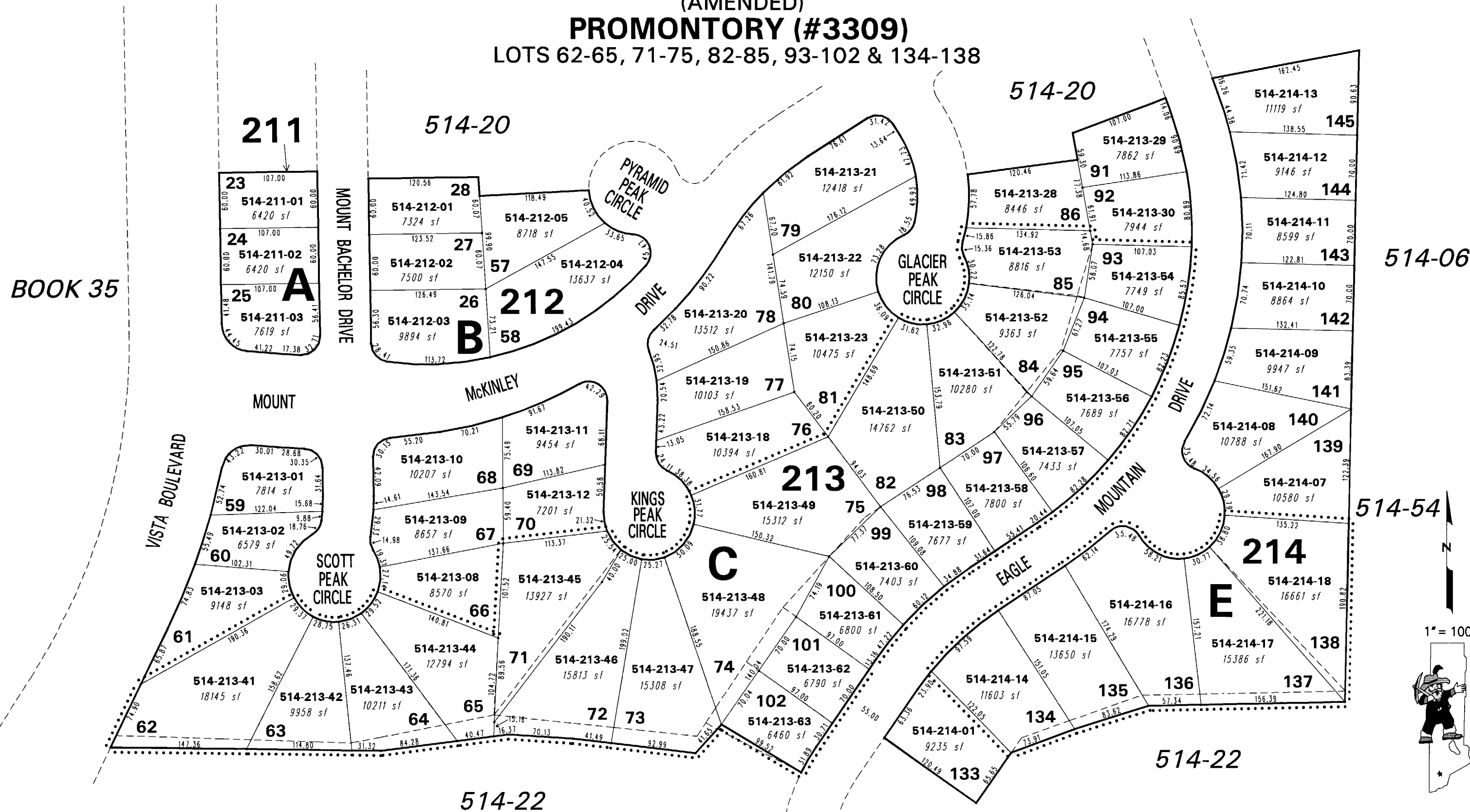


PROMONTORY (#3221)
PORTION NE 1/4 SECTION 27, T20N - R20E

SEE PAGE 20 FOR REFERENCE
TO GPS POINT #2068
CITY OF SPARKS
GROUND COORD

(AMENDED)
PROMONTORY (#3309)
LOTS 62-65, 71-75, 82-85, 93-102 & 134-138



BOOK 35

NOTE: This map is prepared for the use of the Washoe County Assessor for assessment and illustrative purposes only. It does not represent a survey of the premises. No liability is assumed as to the sufficiency or the accuracy of the data delineated hereon.

Office of Washoe County Assessor, Nevada - Robert W. McGowan

This area previously shown on 35-26

NOTE: Areas of parcels which are less than 2 acres are shown in square feet.

Drawn by MZ 03/28/96
Revised 12/96 KSB 7/12/06