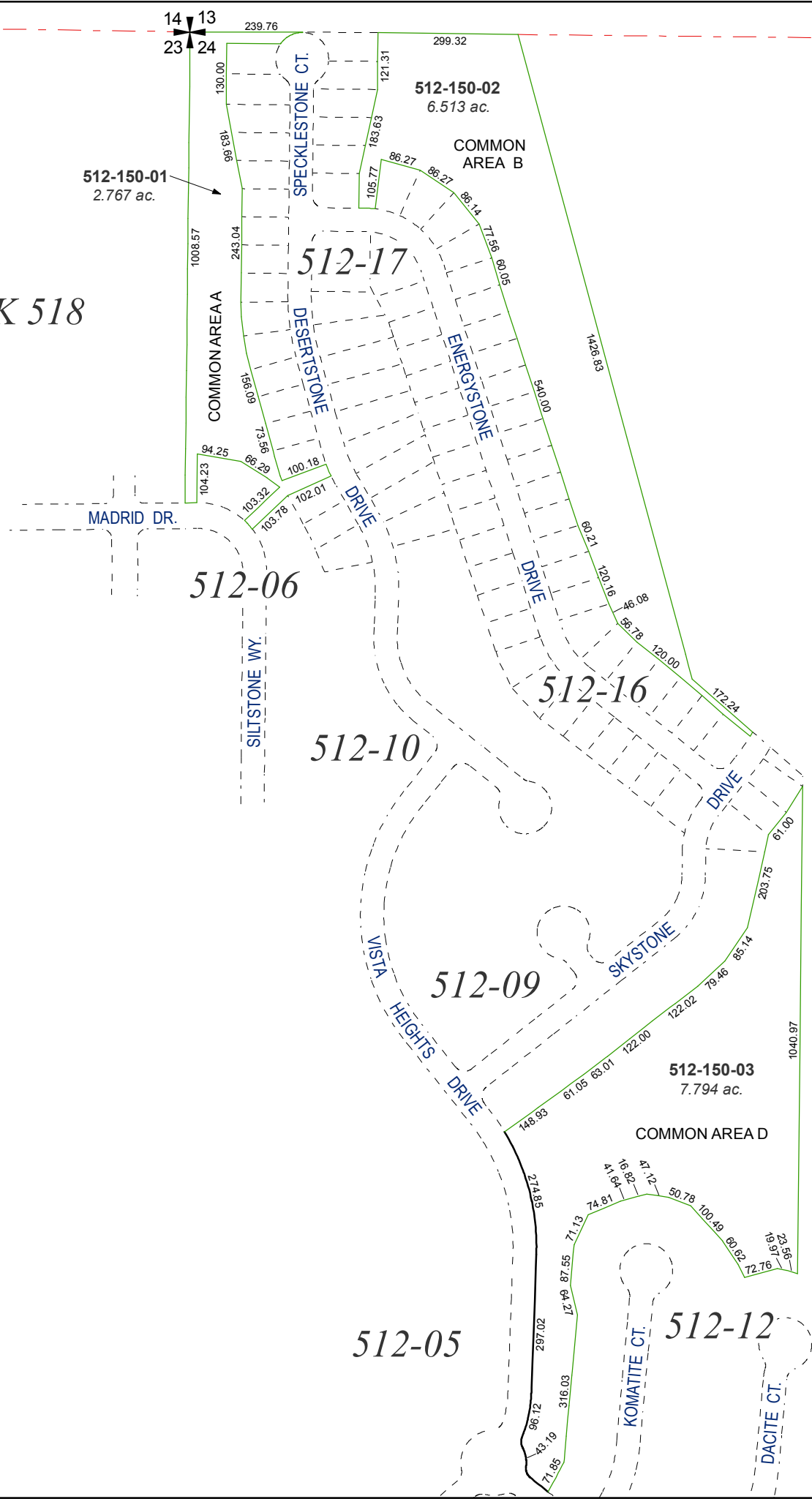


BOOK 518

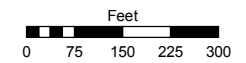


(#4770)
MIRAMONTE PHASE 3B
 NEW URBAN DISTRICT
 PORTION OF W 1/2 SECTION 24
 T20N - R20E

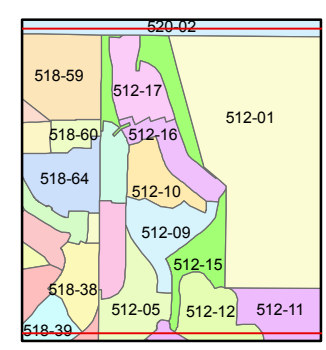
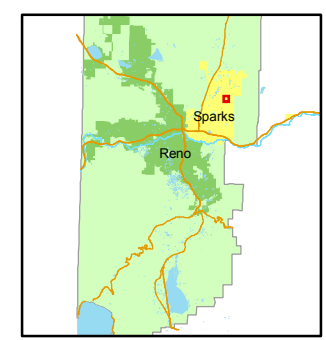
Assessor's Map Number
512-15

STATE OF NEVADA
WASHOE COUNTY
ASSESSOR'S OFFICE
 Joshua G. Wilson, Assessor

1001 East Ninth Street
 Building D
 Reno, Nevada 89512
 (775) 328-2231



1 inch = 300 feet



created by: KSB 10/21/10

last updated: _____

area previously shown on map(s)
512-05

NOTE: This map was prepared for the use of the Washoe County Assessor for assessment and illustrative purposes only. It does not represent a survey of the premises. No liability is assumed as to the sufficiency or accuracy of the data delineated hereon.