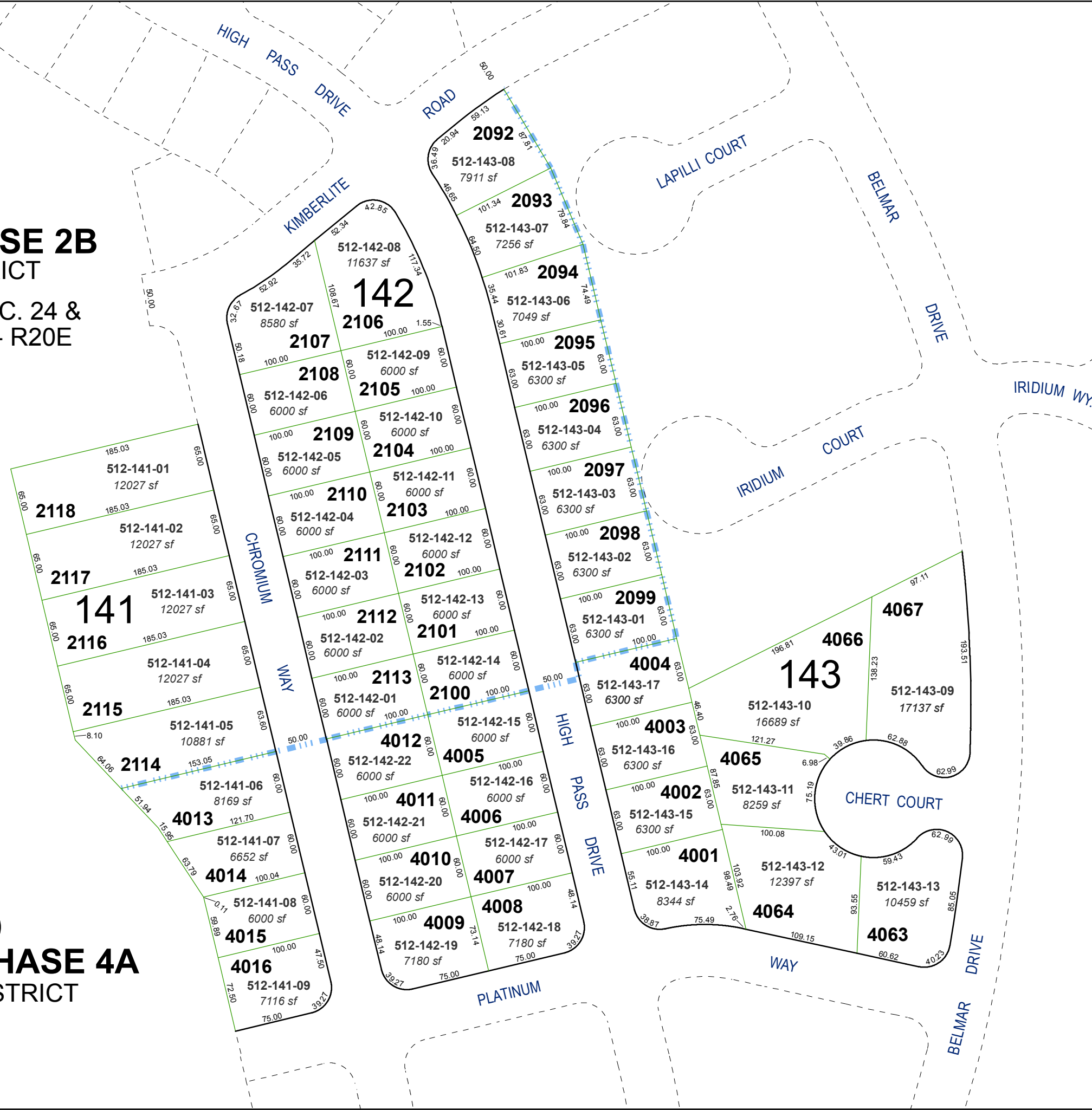


**(#4654)**  
**MIRAMONTE PHASE 2B**  
 NEW URBAN DISTRICT

PORTIONS OF S 1/2 SEC. 24 &  
 NW 1/4 SEC. 25, T20N - R20E

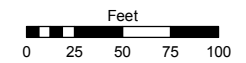
**(#4915)**  
**MIRAMONTE PHASE 4A**  
 NEW URBAN DISTRICT



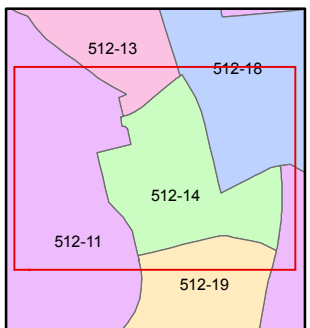
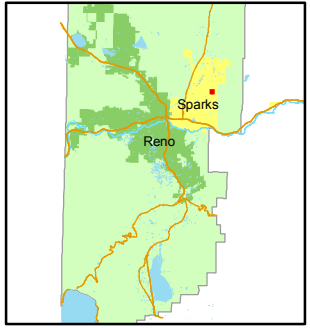
Assessor's Map Number  
**512-14**

STATE OF NEVADA  
**WASHOE COUNTY**  
 ASSESSOR'S OFFICE  
 Joshua G. Wilson, Assessor

1001 East Ninth Street  
 Building D  
 Reno, Nevada 89512  
 (775) 328-2231



1 inch = 100 feet



created by: KSB 10/20/10

last updated: \_\_\_\_\_

area previously shown on map(s)  
512-01, 512-05, 514-01

NOTE: This map was prepared for the use of the Washoe County Assessor for assessment and illustrative purposes only. It does not represent a survey of the premises. No liability is assumed as to the sufficiency or accuracy of the data delineated hereon.