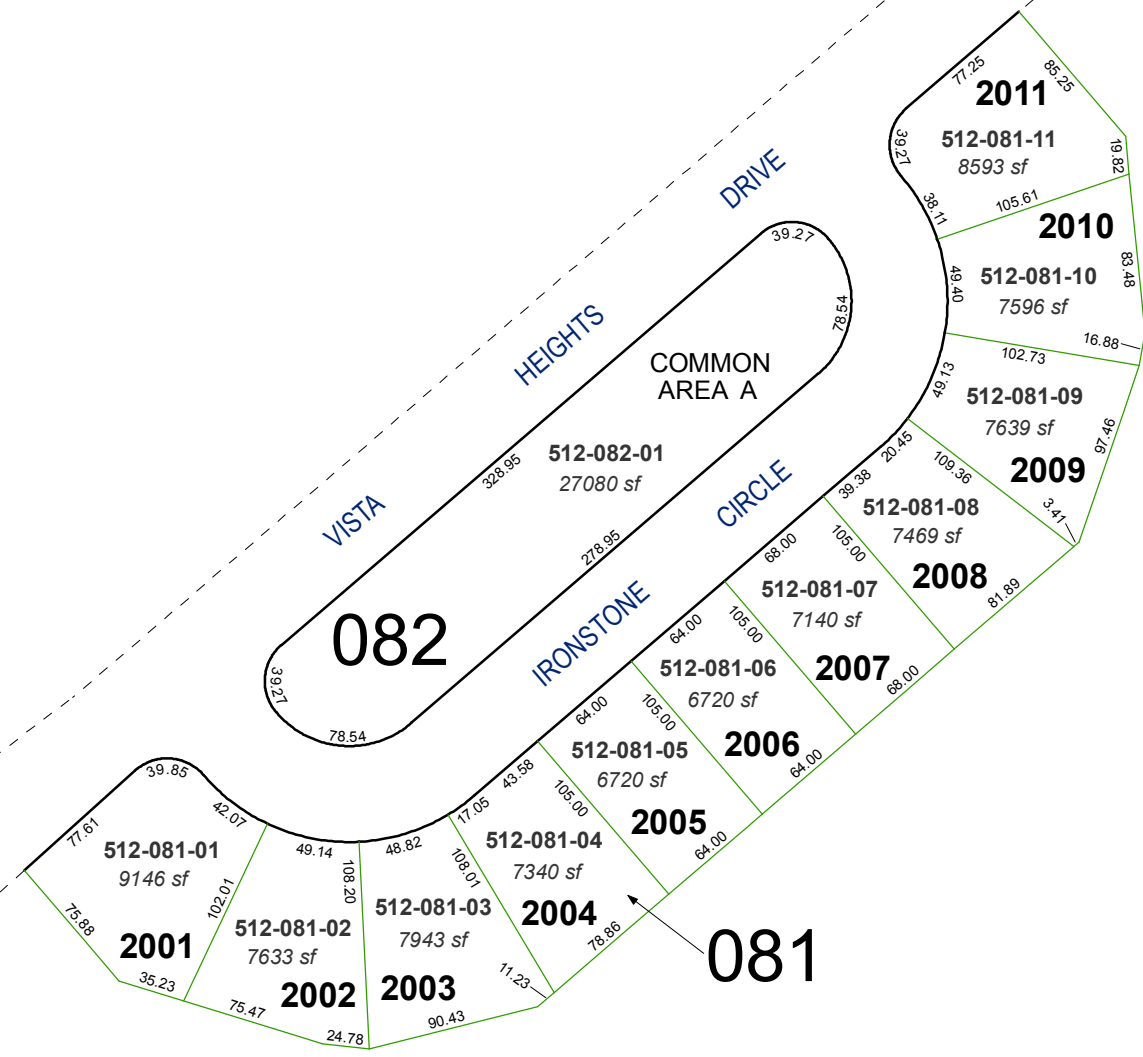
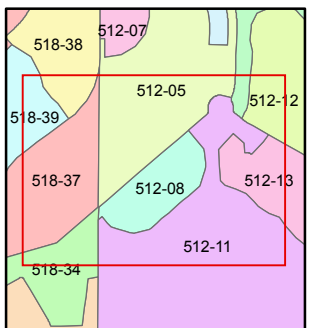
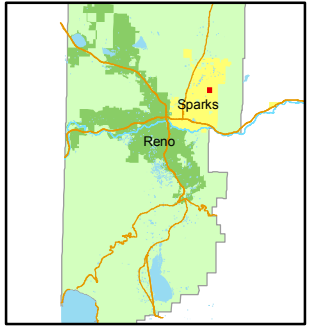
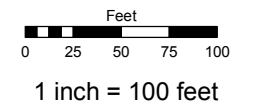


(#4616)
MIRAMONTE PHASE 2A
 NEW URBAN DISTRICT
 PORTION OF W 1/2 SECTION 24
 T20N - R20E



Assessor's Map Number
512-08

STATE OF NEVADA
WASHOE COUNTY
ASSESSOR'S OFFICE
 Joshua G. Wilson, Assessor
 1001 East Ninth Street
 Building D
 Reno, Nevada 89512
 (775) 328-2231



created by: KSB 10/18/10
 last updated: _____
 area previously shown on map(s)
512-05

NOTE: This map was prepared for the use of the Washoe County Assessor for assessment and illustrative purposes only. It does not represent a survey of the premises. No liability is assumed as to the sufficiency or accuracy of the data delineated hereon.