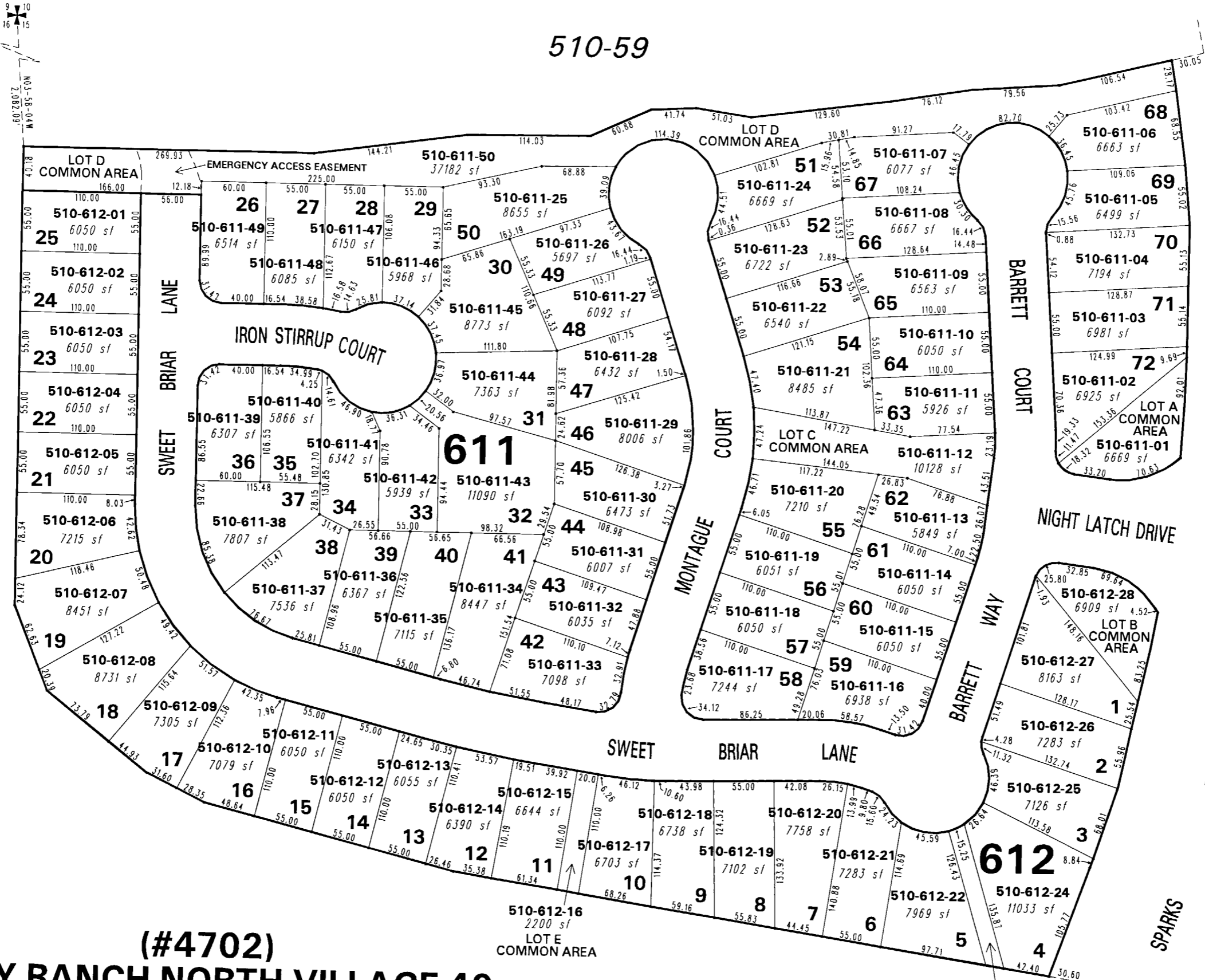


510-59

510-61

083-83



**(#4702)  
KILEY RANCH NORTH VILLAGE 40  
NEW URBAN DEVELOPMENT**

**PORTION OF W 1/2 SECTION 15, T20N - R20E**

083-83

510-62

1" = 100'



NOTE: This map is prepared for the use of the Washoe County Assessor for assessment and illustrative purposes only. It does not represent a survey of the premises. No liability is assumed as to the sufficiency or the accuracy of the data delineated hereon.

Office of Washoe County Assessor, Nevada - Robert W. McGowan

This area previously shown on 083-83

NOTE: Areas of parcels which are less than 2 acres are shown in square feet.

Drawn by KSB 10/23/06  
Revised \_\_\_\_\_  
ARC/INFO 9.0 WINDOWS 2000 5.0