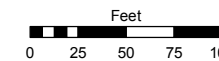
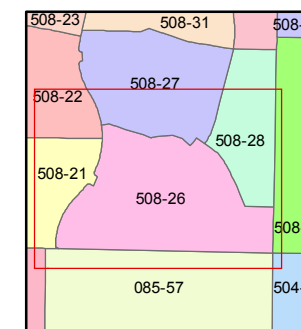
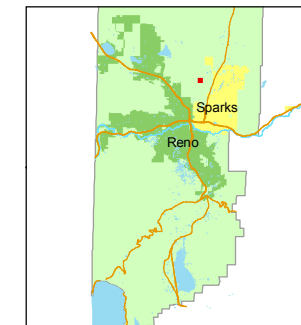


STATE OF NEVADA
WASHOE COUNTY
ASSESSOR'S OFFICE
Joshua G. Wilson, Assessor

1001 East Ninth Street
Building D
Reno, Nevada 89512
(775) 328-2231



1 inch = 100 feet



created by: DSR 1/13/2011

last updated: _____

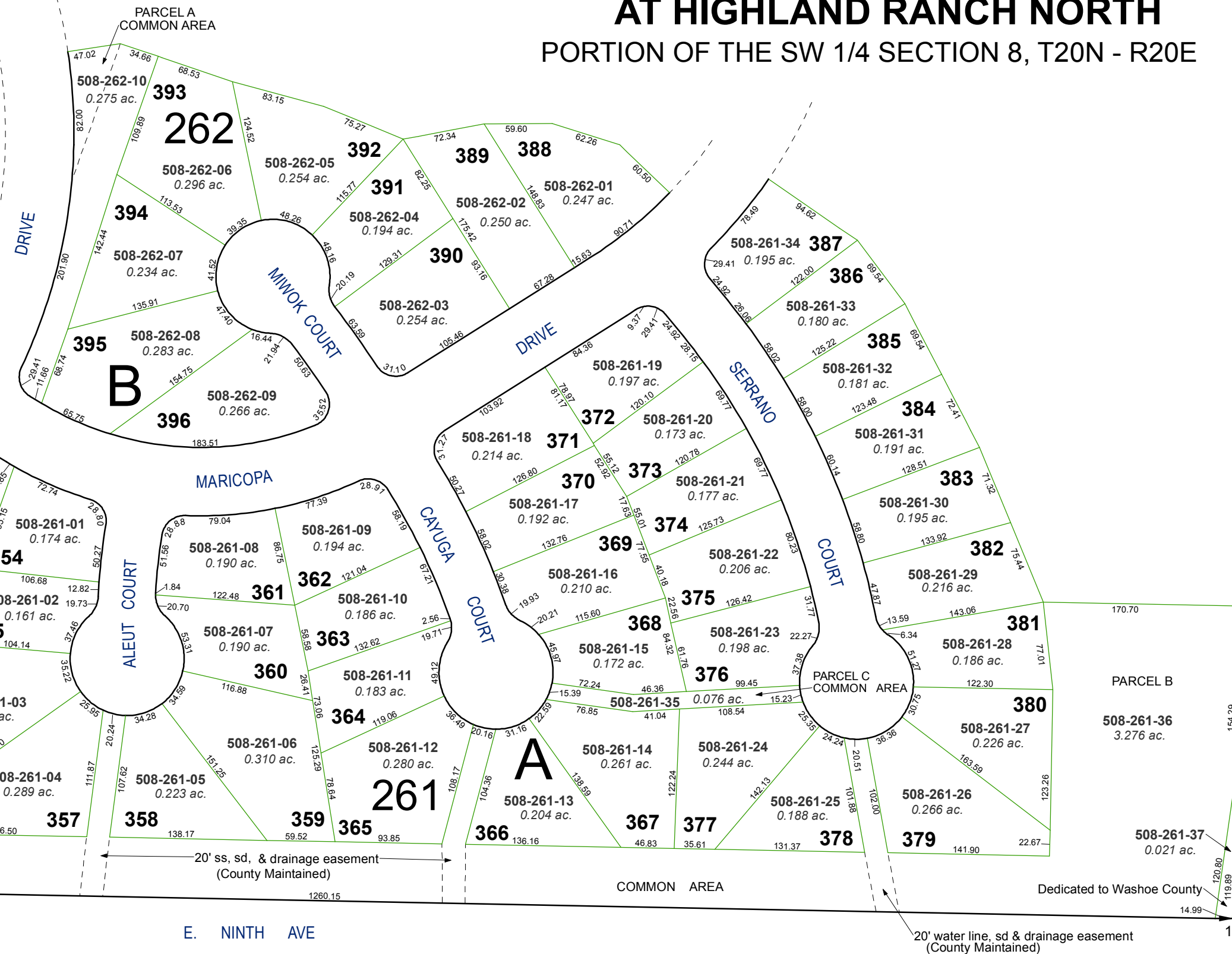
area previously shown on map(s)

083-45

NOTE: This map was prepared for the use of the Washoe County Assessor for assessment and illustrative purposes only. It does not represent a survey of the premises. No liability is assumed as to the sufficiency or accuracy of the data delineated hereon.

(#3115) STONE CREEK PHASE 8 AT HIGHLAND RANCH NORTH

PORTION OF THE SW 1/4 SECTION 8, T20N - R20E



E. NINTH AVE

8

20' water line, sd & drainage easement
(County Maintained)

35' electric & telephone easement

20' ss, sd, & drainage easement
(County Maintained)

Dedicated to Washoe County