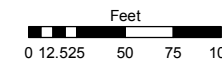
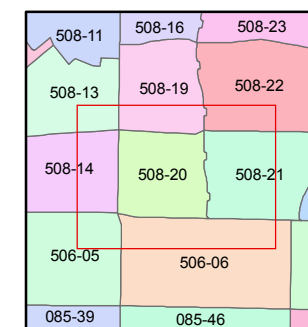
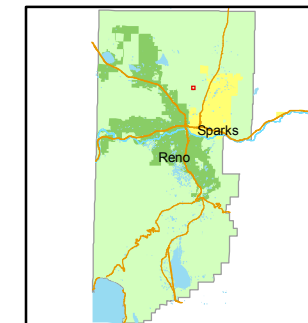


STATE OF NEVADA
WASHOE COUNTY
ASSESSOR'S OFFICE
Joshua G. Wilson, Assessor

1001 East Ninth Street
Building D
Reno, Nevada 89512
(775) 328-2231



1 inch = 100 feet



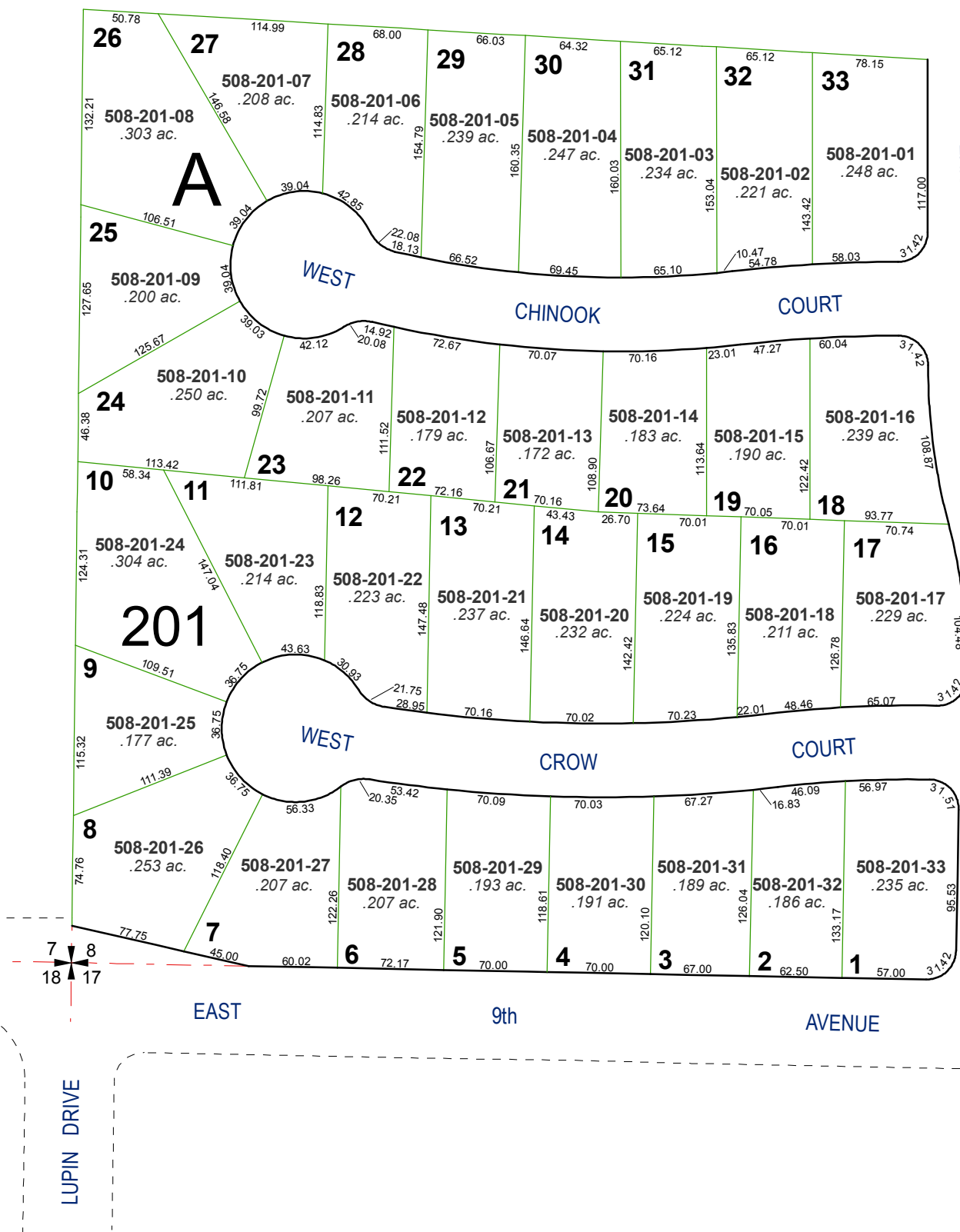
created by: NLH 9/27/2010

last updated: _____

area previously shown on map(s)

NOTE: This map was prepared for the use of the Washoe County Assessor for assessment and illustrative purposes only. It does not represent a survey of the premises. No liability is assumed as to the sufficiency or accuracy of the data delineated hereon.

(#2963)
STONE CREEK PHASE II
AT
HIGHLAND RANCH NORTH
A POR. OF THE SW ¼ OF SEC. 8
T20N - R20E



DRIVE

ARAPAHO

LUPIN DRIVE