

(#1194) JUNIPER TERRACE MOBILE HOME ESTATES UNIT NO. 5

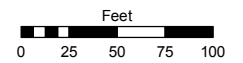
POR. S.E. 1/4 OF SECTION 7, T20N - R20E

Assessor's Map Number

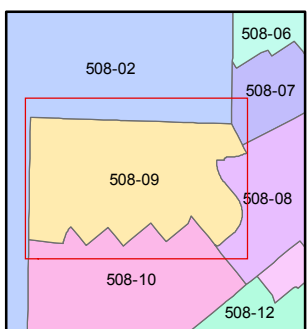
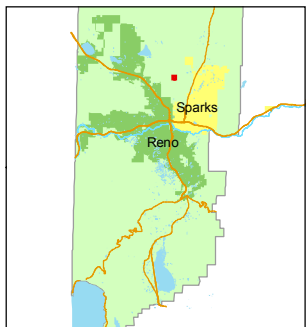
508-09

STATE OF NEVADA
WASHOE COUNTY
ASSESSOR'S OFFICE
Joshua G. Wilson, Assessor

1001 East Ninth Street
Building D
Reno, Nevada 89512
(775) 328-2231



1 inch = 100 feet



created by: DSR 1/13/2011

last updated: _____

area previously shown on map(s)

083-33 083-34 083-35

NOTE: This map was prepared for the use of the Washoe County Assessor for assessment and illustrative purposes only. It does not represent a survey of the premises. No liability is assumed as to the sufficiency or accuracy of the data delineated hereon.

