

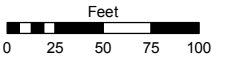
(#1337)
JUNIPER TERRACE MOBILE HOME ESTATES SUBDIVISION
UNIT NO. 6-B
 POR. E 1/2 SECTION 7. T20N - R20E

Assessor's Map Number

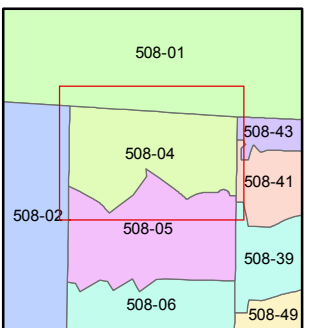
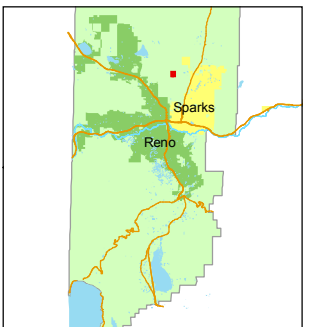
508-04

STATE OF NEVADA
WASHOE COUNTY
ASSESSOR'S OFFICE
 Joshua G. Wilson, Assessor

1001 East Ninth Street
 Building D
 Reno, Nevada 89512
 (775) 328-2231



1 inch = 100 feet



created by: DSR 11/18/2010

last updated: _____

area previously shown on map(s)

083-41 083-42

NOTE: This map was prepared for the use of the Washoe County Assessor for assessment and illustrative purposes only. It does not represent a survey of the premises. No liability is assumed as to the sufficiency or accuracy of the data delineated hereon.

