

(#3206)
DESERT VIEW
 POR. N¼ SEC. 18, T20N - R20E

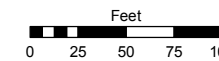
(#1517)
S&S ESTATES
 POR. NW¼ NE¼ SEC. 18, T20N - R20E

POR. N½ NW¼ NE¼ SEC. 18
 T20N - R20E

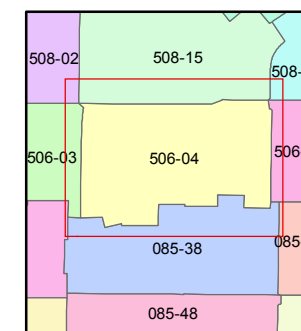
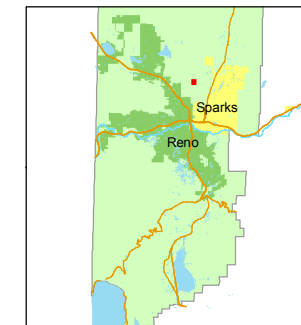
Assessor's Map Number
506-04

STATE OF NEVADA
WASHOE COUNTY
 ASSESSOR'S OFFICE
 Joshua G. Wilson, Assessor

1001 East Ninth Street
 Building D
 Reno, Nevada 89512
 (775) 328-2231



1 inch = 100 feet



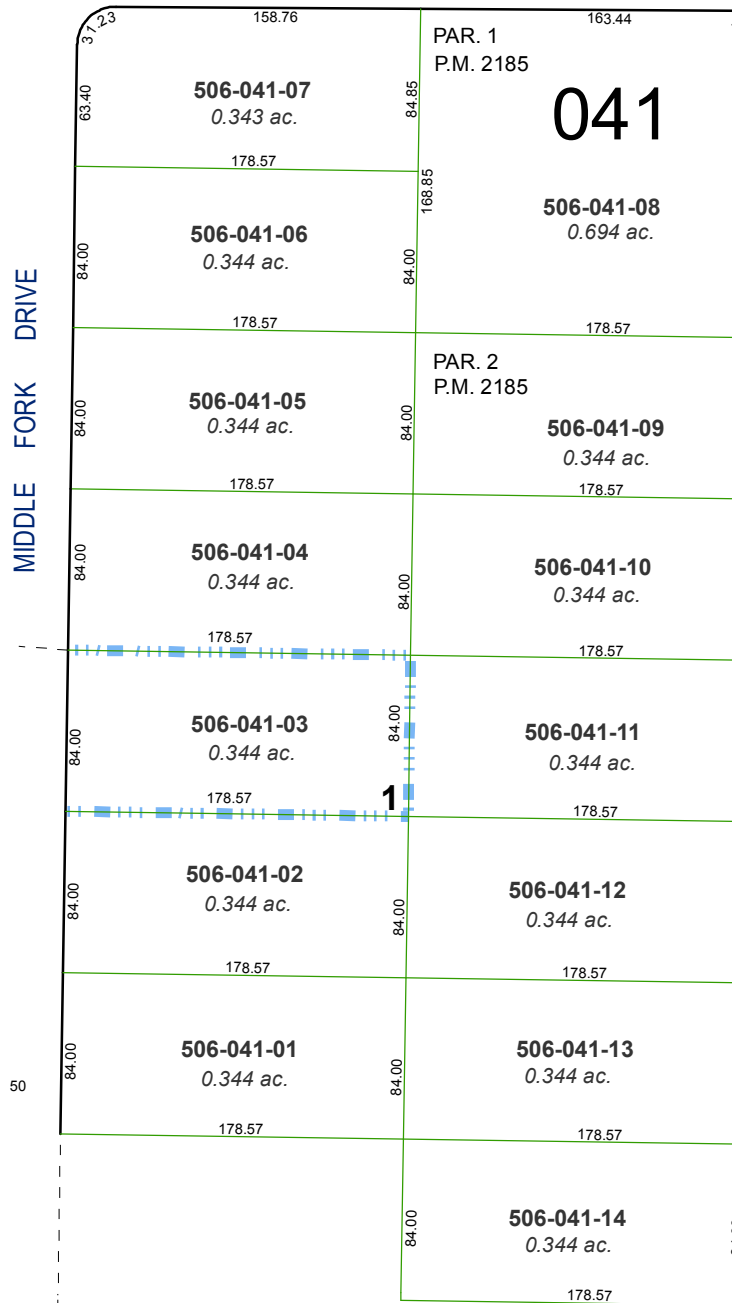
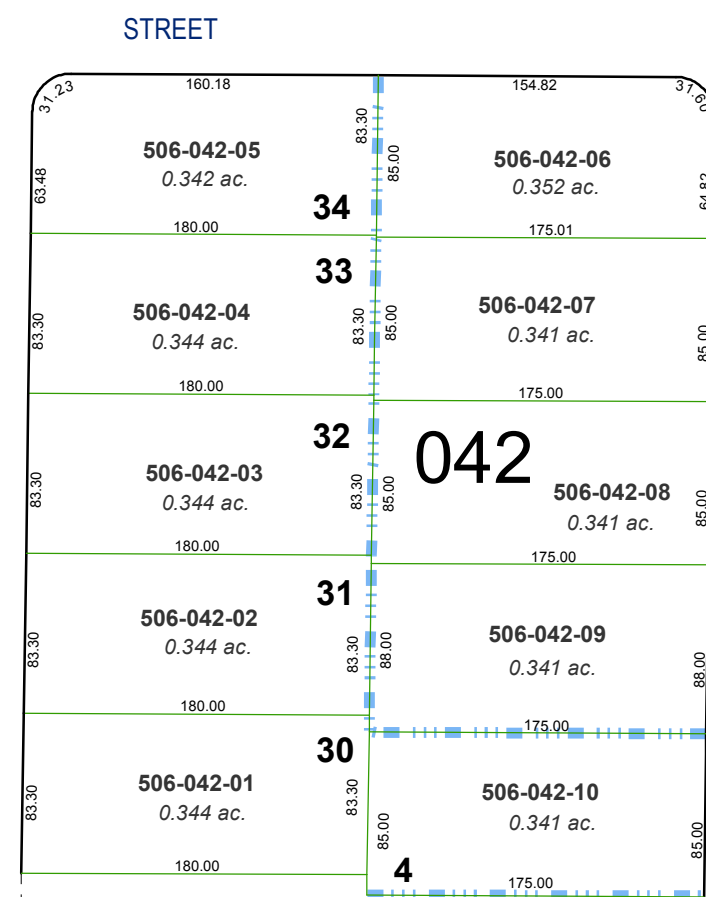
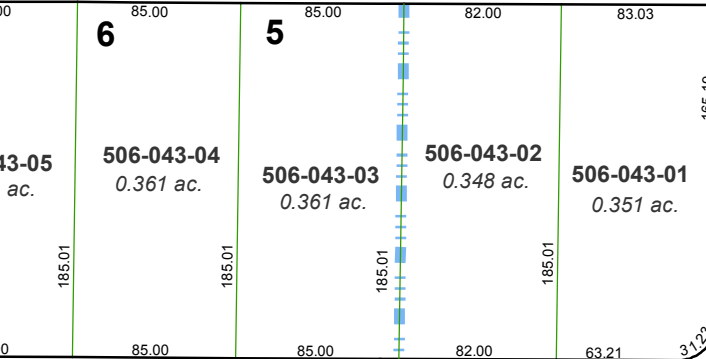
created by: DSR 11/12/2010

last updated: _____

area previously shown on map(s)

085-40

NOTE: This map was prepared for the use of the Washoe County Assessor for assessment and illustrative purposes only. It does not represent a survey of the premises. No liability is assumed as to the sufficiency or accuracy of the data delineated hereon.



SUN VALLEY BLVD.

NINTH AVENUE

SERGEI STREET

STREET

APPLEGATE DRIVE

MIDDLE FORK DRIVE

LEON DRIVE

043

042

041

PARCEL 1
RS 2949

PAR. 1
P.M. 2185

PAR. 2
P.M. 2185

NATURAL DRAINAGE
EASEMENT (PRIVATE)

15' DRAINAGE
& ACCESS EASEMENT

6" DRAINAGE
EASEMENT (PRIVATE)

DETENTION POND
EASEMENT (PRIVATE)