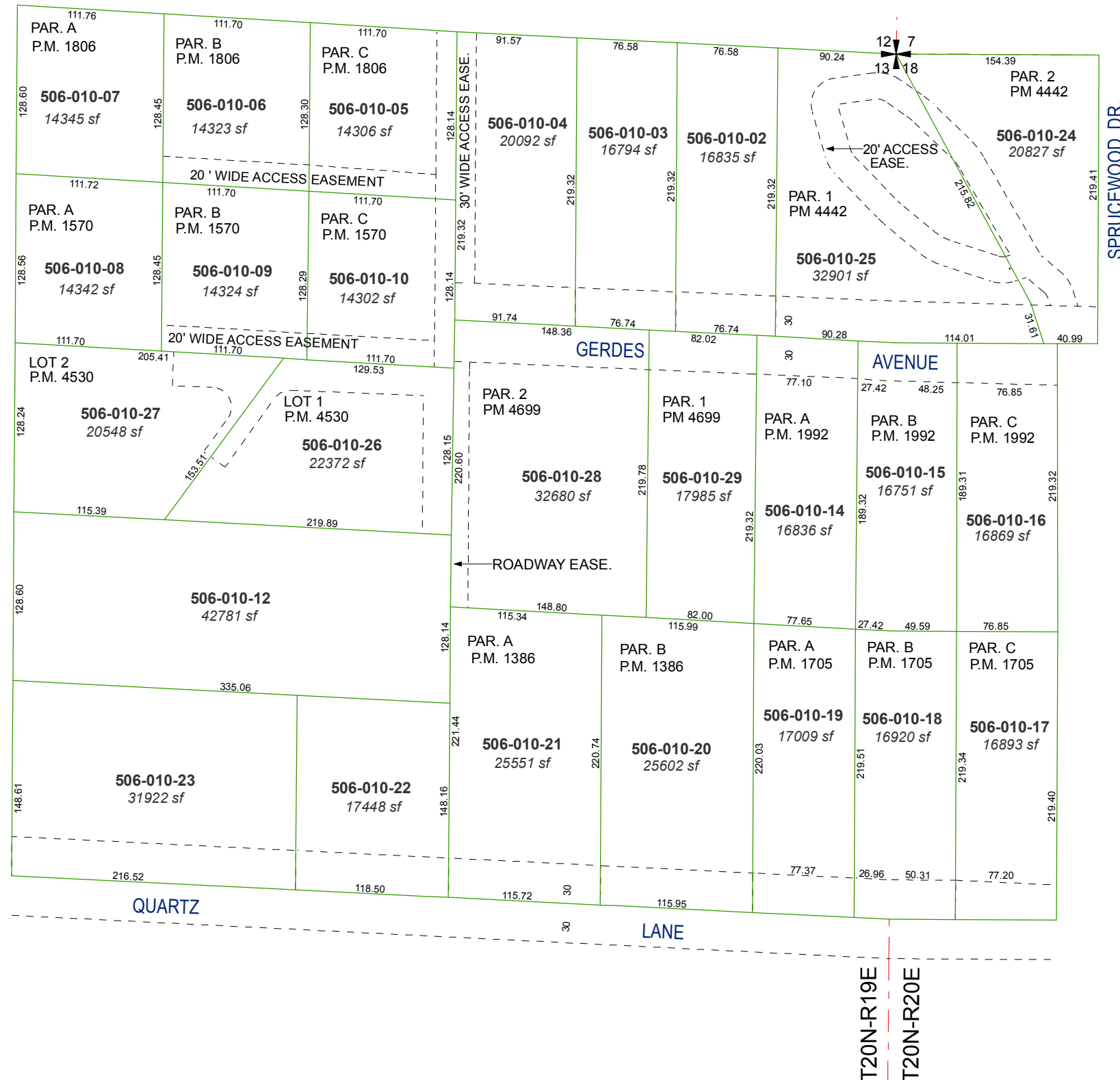


NE 1/4 OF NE 1/4 OF NE 1/4 SEC. 13
T20N - R19E
AND
PORTION OF NW 1/4 OF NW 1/4 OF NW 1/4 SEC. 18
T20N - R20E

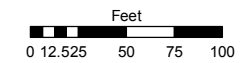


Assessor's Map Number

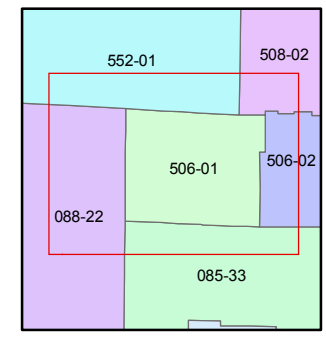
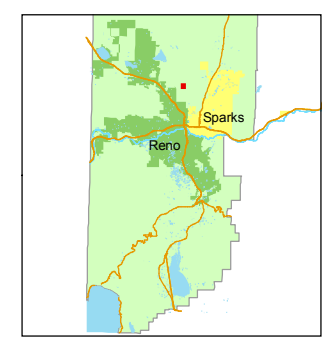
506-01

STATE OF NEVADA
WASHOE COUNTY
ASSESSOR'S OFFICE
Joshua G. Wilson, Assessor

1001 East Ninth Street
Building D
Reno, Nevada 89512
(775) 328-2231



1 inch = 100 feet



created by: CFB 07/06/2010

last updated: _____

area previously shown on map(s)

NOTE: This map was prepared for the use of the Washoe County Assessor for assessment and illustrative purposes only. It does not represent a survey of the premises. No liability is assumed as to the sufficiency or accuracy of the data delineated hereon.