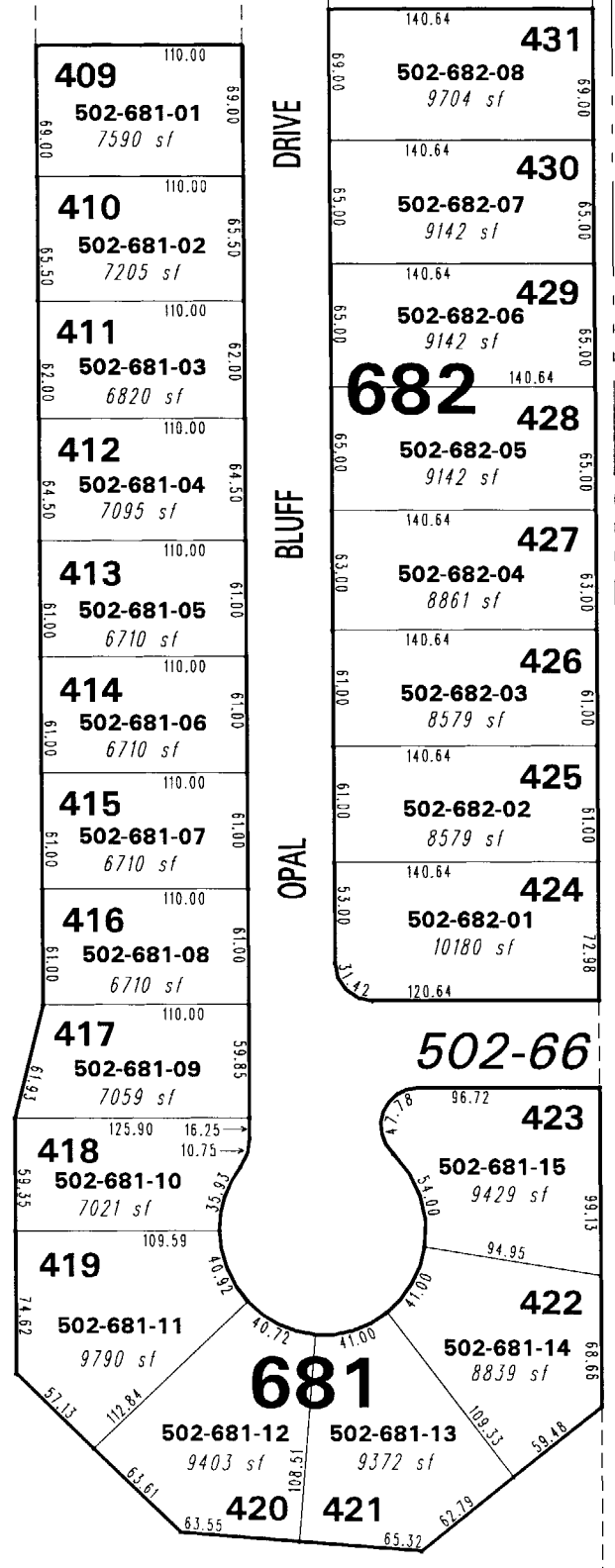


502-56

502-67



CITY OF RENO  
WASHOE COUNTY

**(#4710)**  
**NORTHSTAR RANCH PHASE 4**  
 PORTION OF THE E 1/2 OF THE SE 1/4 OF SEC. 14  
 T20N - R19E

502-70

502-66

082-59

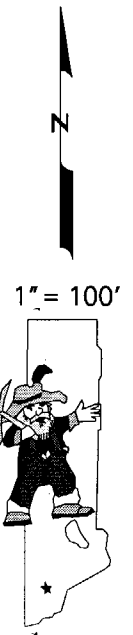
NOTE: This map is prepared for the use of the Washoe County Assessor for assessment and illustrative purposes only. It does not represent a survey of the premises. No liability is assumed as to the sufficiency or the accuracy of the data delineated hereon.

Office of Washoe County Assessor, Nevada - Joshua G. Wilson

This area previously shown on 502-55

NOTE: Areas of parcels which are less than 2 acres are shown in square feet.

Drawn by NLH 10/23/06  
 Revised NLH 07/06/07 NLH 10/27/08



1" = 100'