

SPARKS GPS 2034
N 14,880,730.168
E 2,308,778.392

500-34-08W
5634.64'

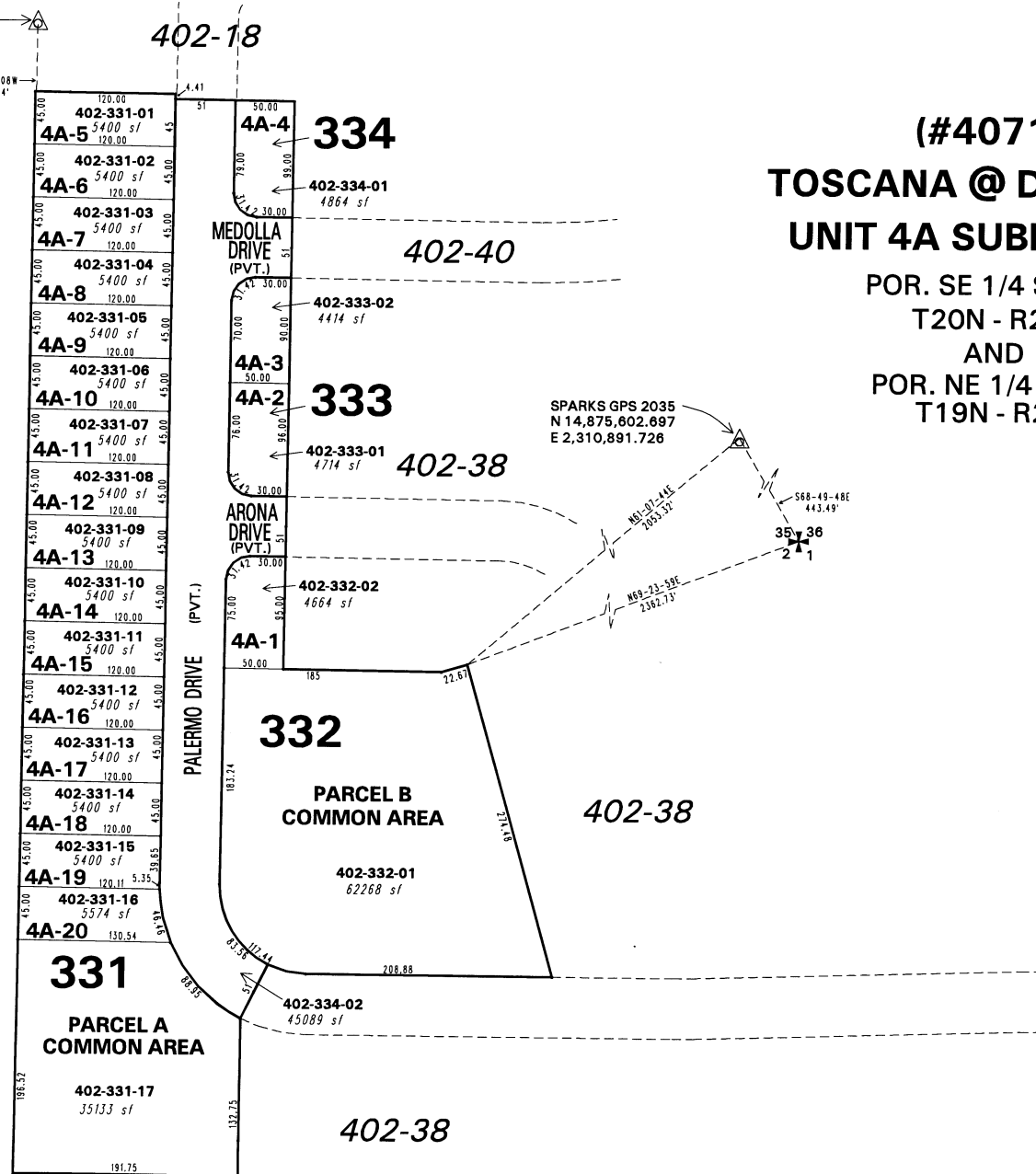
402-18

**(#4071)
TOSCANA @ D'ANDREA
UNIT 4A SUBDIVISION**

POR. SE 1/4 SEC. 35
T20N - R20E
AND
POR. NE 1/4 SEC. 2
T19N - R20E

BOOK 30

VISTA BOULEVARD



SPARKS GPS 2035
N 14,875,602.697
E 2,310,891.726

S68-49-48E
443.49'
S69-07-44E
205.32'
S69-23-59E
2362.73'



1" = 100'



NOTE: This map is prepared for the use of the Washoe County Assessor for assessment and illustrative purposes only. It does not represent a survey of the premises. No liability is assumed as to the sufficiency or the accuracy of the data delineated hereon.

BOOK 30
Office of Washoe County Assessor, Nevada - Robert W. McGowan

This area previously shown on _____ 402-11 _____

NOTE: Areas of parcels which are less than 2 acres are shown in square feet.

Drawn by HCS 05/07/02
Revised HCS 11/5/02 HCS 4/24/03