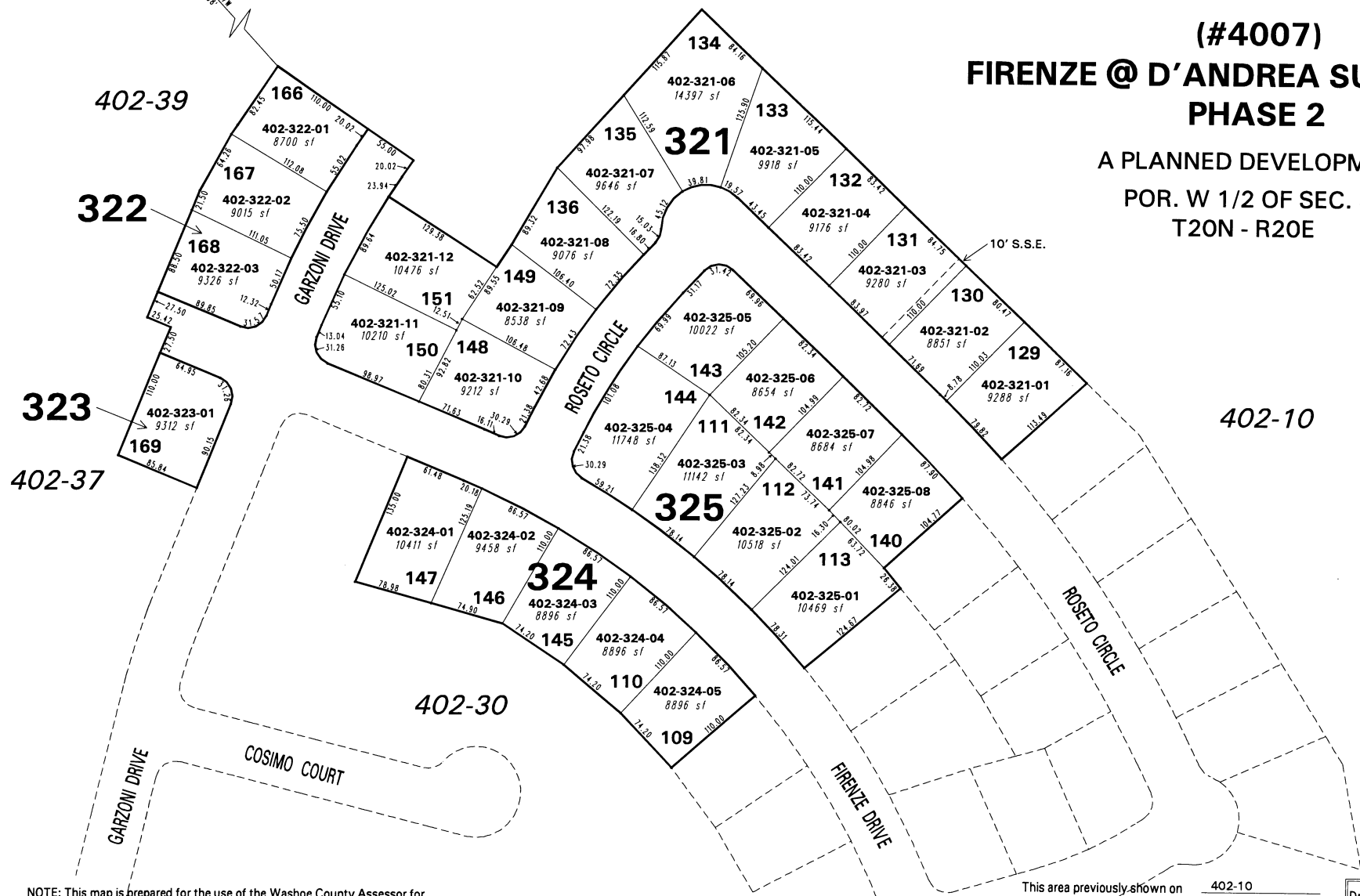


CITY OF SPARKS
GPS #2034
N 14,880,730.1680
E 2,308,778.3920

(#4007) FIRENZE @ D'ANDREA SUBDIVISION PHASE 2

A PLANNED DEVELOPMENT
POR. W 1/2 OF SEC. 36
T20N - R20E



NOTE: This map is prepared for the use of the Washoe County Assessor for assessment and illustrative purposes only. It does not represent a survey of the premises. No liability is assumed as to the sufficiency or the accuracy of the data delineated hereon.

Office of Washoe County Assessor, Nevada - Robert W. McGowan

This area previously shown on 402-10

NOTE: Areas of parcels which are less than 2 acres are shown in square feet.

Drawn by	HCS 10/5/01
Revised	HCS 12/12/01, 2/4/02
	HCS 10/16/02, HCS 11/19/02, 6/23/03