

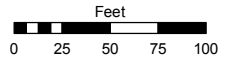
PORTION OF SECTION 16
T19N - R19E
ANNEX. T.M. 3653, ORD. #4969

Assessor's Map Number

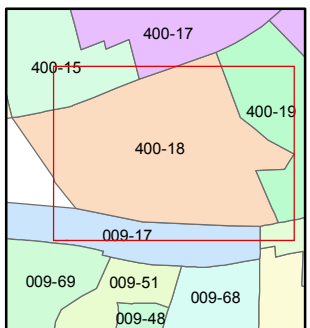
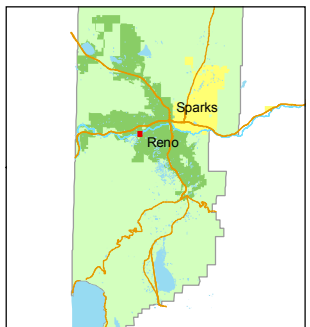
400-18

STATE OF NEVADA
WASHOE COUNTY
ASSESSOR'S OFFICE
Joshua G. Wilson, Assessor

1001 East Ninth Street
Building D
Reno, Nevada 89512
(775) 328-2231



1 inch = 100 feet



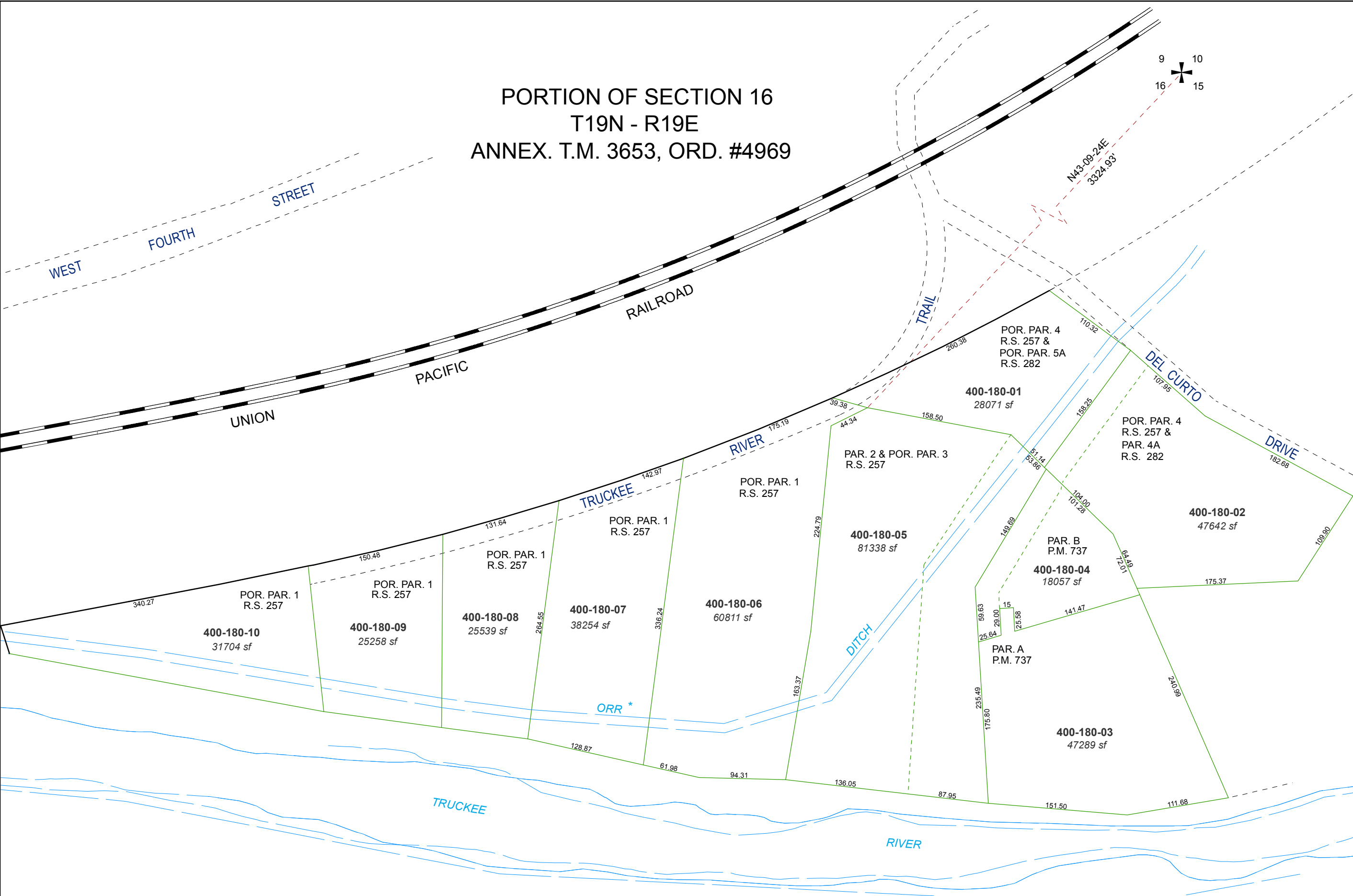
created by: DSR 3/17/2011

last updated: _____

area previously shown on map(s)

05-23

NOTE: This map was prepared for the use of the Washoe County Assessor for assessment and illustrative purposes only. It does not represent a survey of the premises. No liability is assumed as to the sufficiency or accuracy of the data delineated hereon.



* Location of Orr Ditch taken from aerial photos