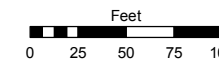
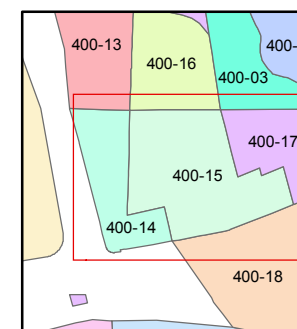
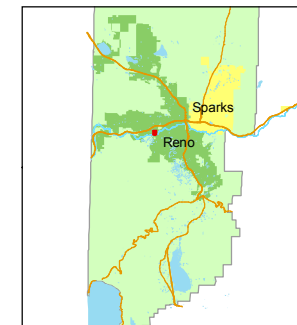


STATE OF NEVADA  
**WASHOE COUNTY**  
ASSESSOR'S OFFICE  
Joshua G. Wilson, Assessor

1001 East Ninth Street  
Building D  
Reno, Nevada 89512  
(775) 328-2231



1 inch = 100 feet



created by: DSR 3/16/2011

last updated: \_\_\_\_\_

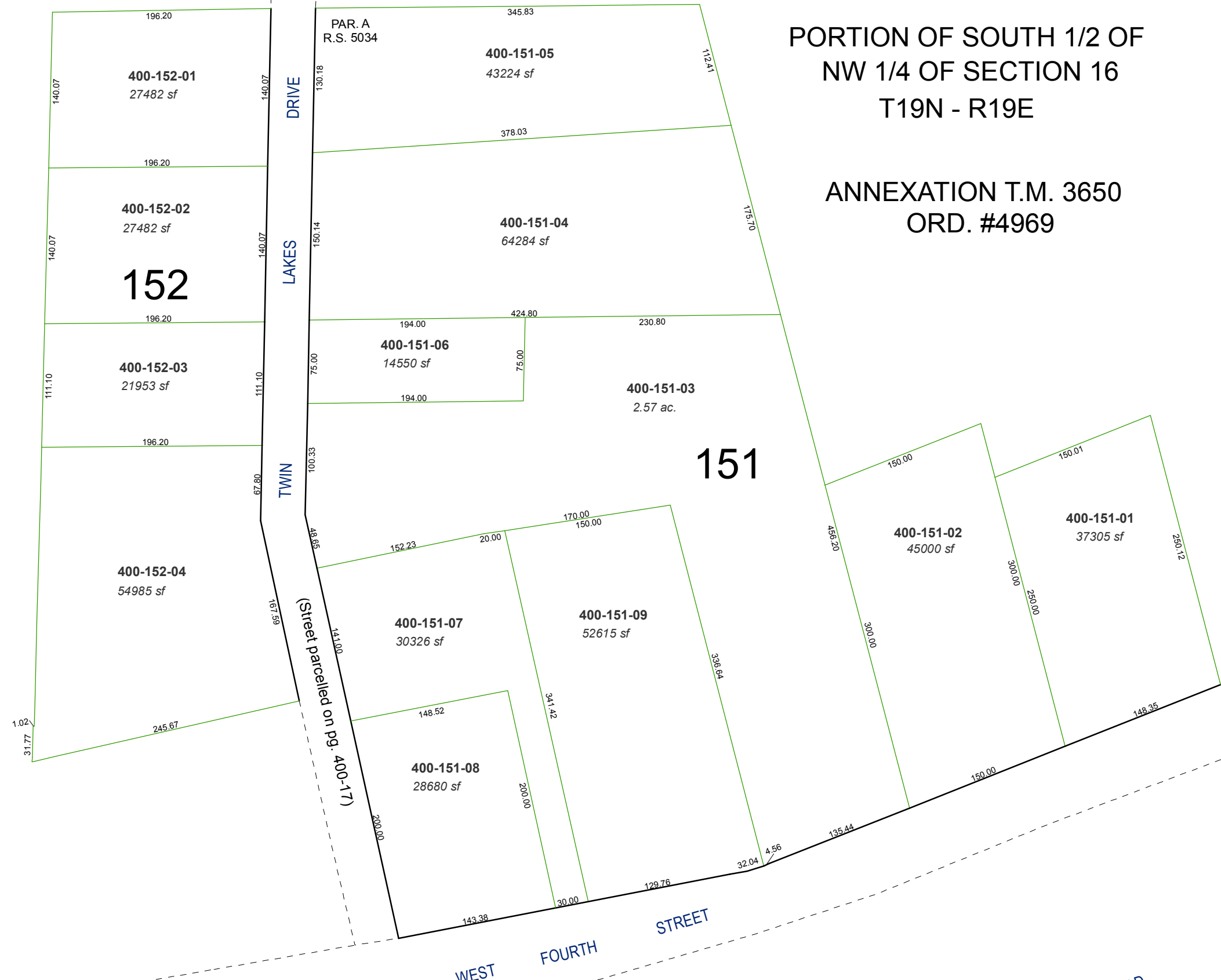
area previously shown on map(s)

05-21

NOTE: This map was prepared for the use of the Washoe County Assessor for assessment and illustrative purposes only. It does not represent a survey of the premises. No liability is assumed as to the sufficiency or accuracy of the data delineated hereon.

PORTION OF SOUTH 1/2 OF  
NW 1/4 OF SECTION 16  
T19N - R19E

ANNEXATION T.M. 3650  
ORD. #4969



SOUTH  
MCCARRAN  
BOULEVARD

DRIVE  
LAKES  
TWIN

WEST  
FOURTH  
STREET

UNION  
PACIFIC  
RAILROAD

(Street parcelled on pg. 400-17)