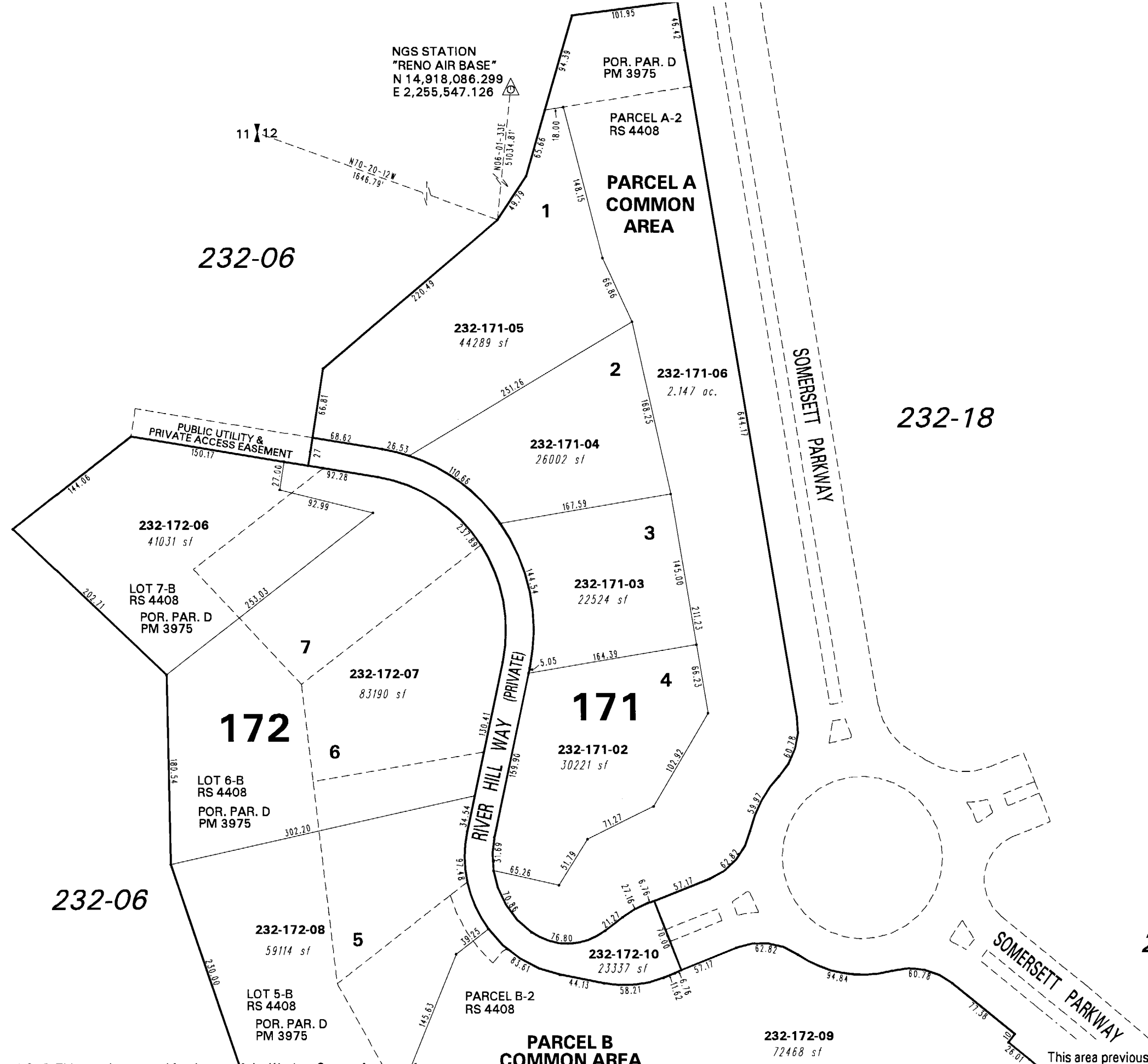


(#4116)
RIVERSIDE @ SOMERSETT
POR. SW 1/4 SECTION 12
T19N - R18E



NGS STATION
"RENO AIR BASE"
N 14,918,086.299
E 2,255,547.126

232-06

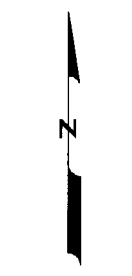
232-18

232-20

172

171

232-06



1" = 100'



NOTE: This map is prepared for the use of the Washoe County Assessor for assessment and illustrative purposes only. It does not represent a survey of the premises. No liability is assumed as to the sufficiency or the accuracy of the data delineated hereon.

Office of Washoe County Assessor, Nevada - Robert W. McGowan

This area previously shown on 232-06

NOTE: Areas of parcels which are less than 2 acres are shown in square feet.

Drawn by HCS 10/01/02
Revised HCS 10/15/02 KSB 8/03/04