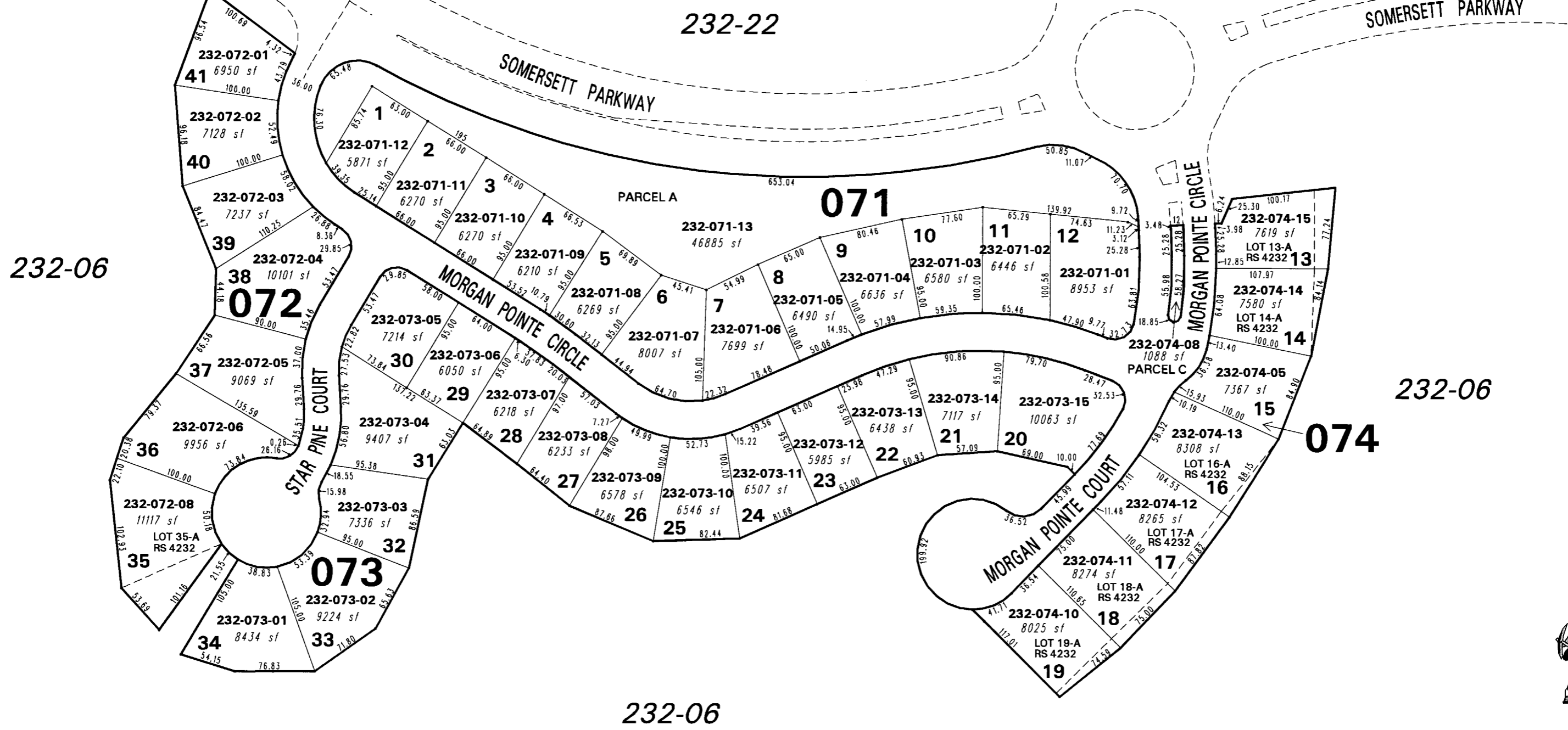


(#4055)
MORGAN POINTE @ SOMERSETT

POR. SECTIONS 11 & 12
T19N - R18E



NOTE: This map is prepared for the use of the Washoe County Assessor for assessment and illustrative purposes only. It does not represent a survey of the premises. No liability is assumed as to the sufficiency or the accuracy of the data delineated hereon.

Office of Washoe County Assessor, Nevada - Robert W. McGowan

This area previously shown on 232-01

NOTE: Areas of parcels which are less than 2 acres are shown in square feet.

Drawn by	<u>HCS</u>	<u>03/06/02</u>
Revised	<u>KSB</u>	<u>7/20/06</u>

