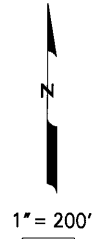
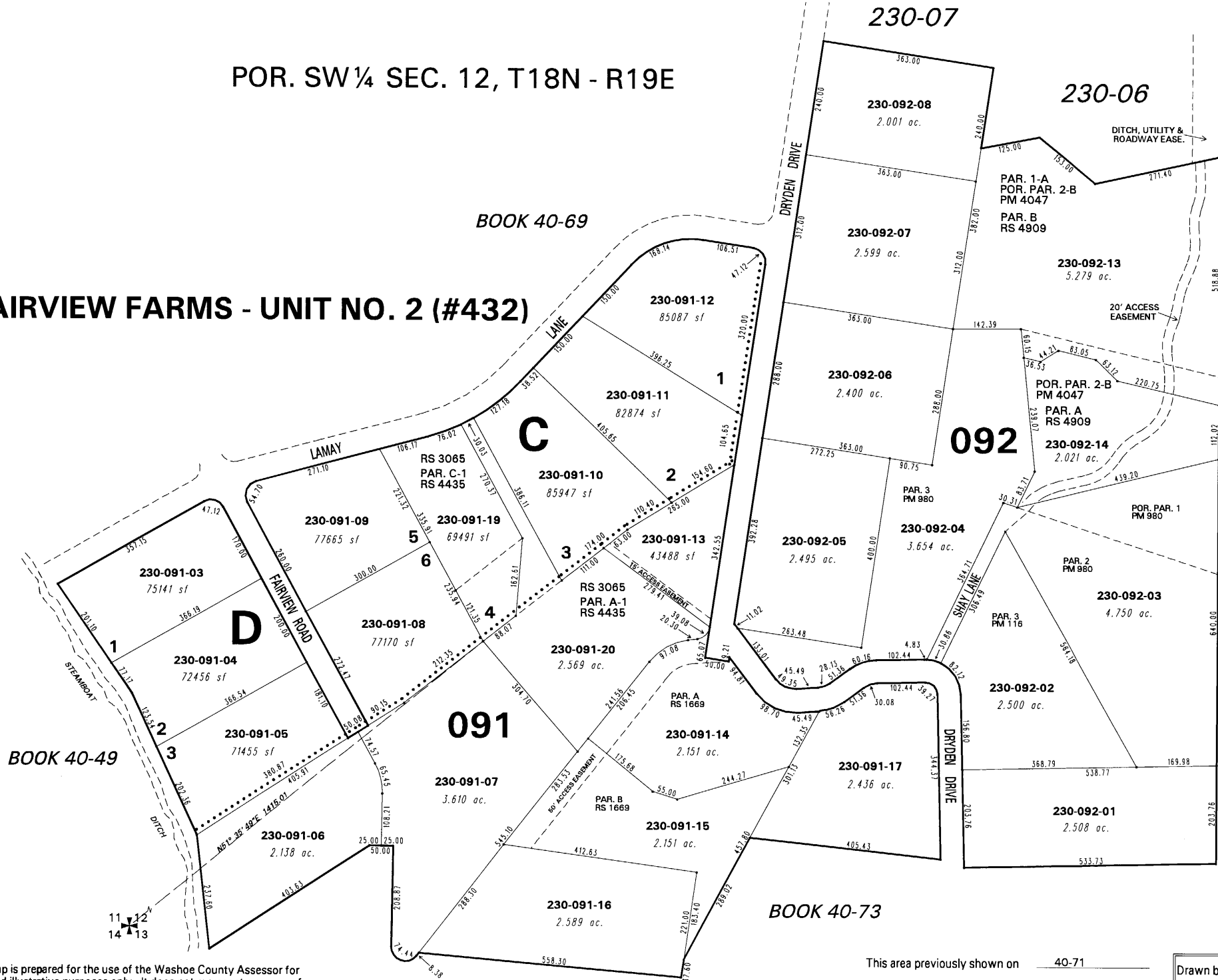


POR. SW ¼ SEC. 12, T18N - R19E

FAIRVIEW FARMS - UNIT NO. 2 (#432)



1" = 200'



NOTE: This map is prepared for the use of the Washoe County Assessor for assessment and illustrative purposes only. It does not represent a survey of the premises. No liability is assumed as to the sufficiency or the accuracy of the data delineated hereon.

Office of Washoe County Assessor, Nevada - Joshua G. Wilson

This area previously shown on 40-71

NOTE: Areas of parcels which are less than 2 acres are shown in square feet.

Drawn by _GZ & CN 8/7/96
 Revised KSB 7/30/03 KSB 8/17/04
 KSB 8/10/07 KSB 10/02/07