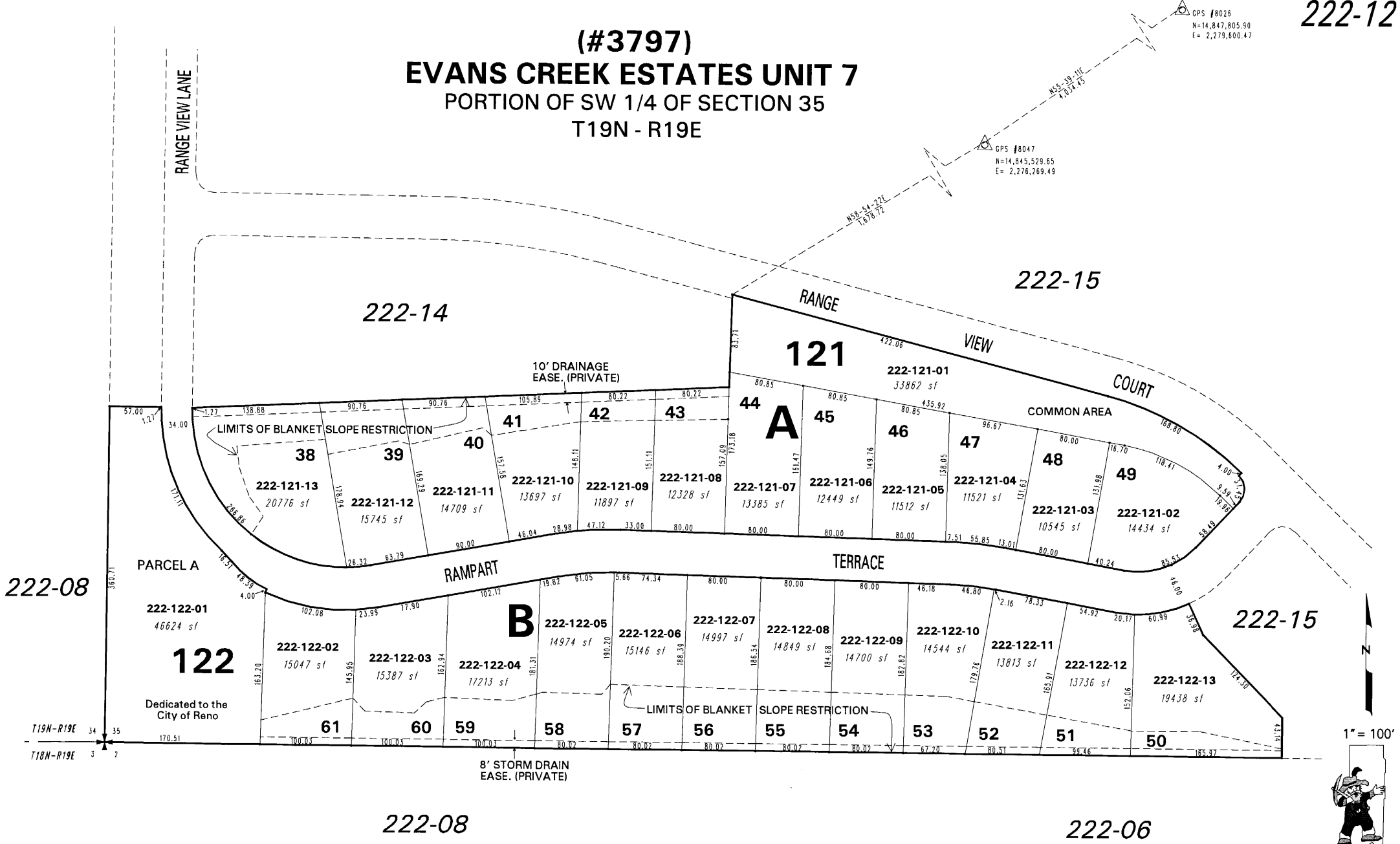


GPS #8026  
N=14,847,805.90  
E= 2,278,600.47

GPS #8047  
N=14,845,529.65  
E= 2,276,269.49

# (#3797) EVANS CREEK ESTATES UNIT 7 PORTION OF SW 1/4 OF SECTION 35 T19N - R19E



222-08

222-15

222-15

222-08

222-06

1" = 100'



NOTE: This map is prepared for the use of the Washoe County Assessor for assessment and illustrative purposes only. It does not represent a survey of the premises. No liability is assumed as to the sufficiency or the accuracy of the data delineated hereon.

Office of Washoe County Assessor, Nevada - Robert W. McGowan

This area previously shown on 41-04, 10 & 41

NOTE: Areas of parcels which are less than 2 acres are shown in square feet.

Drawn by KS 02/01/00  
 Revised KSB 4/15/05

ARC/INFO B.O. WINDOWS 2000/5.0