

(#4803)

SHARLANDS PLANNING, UNIT 1

VILLA TOSCANA

A COMMON INTEREST COMMUNITY

A POR. OF THE NW 1/4 OF SEC. 18

T19N - R19E

212-09-S3

212-10-S2

212-10-S2

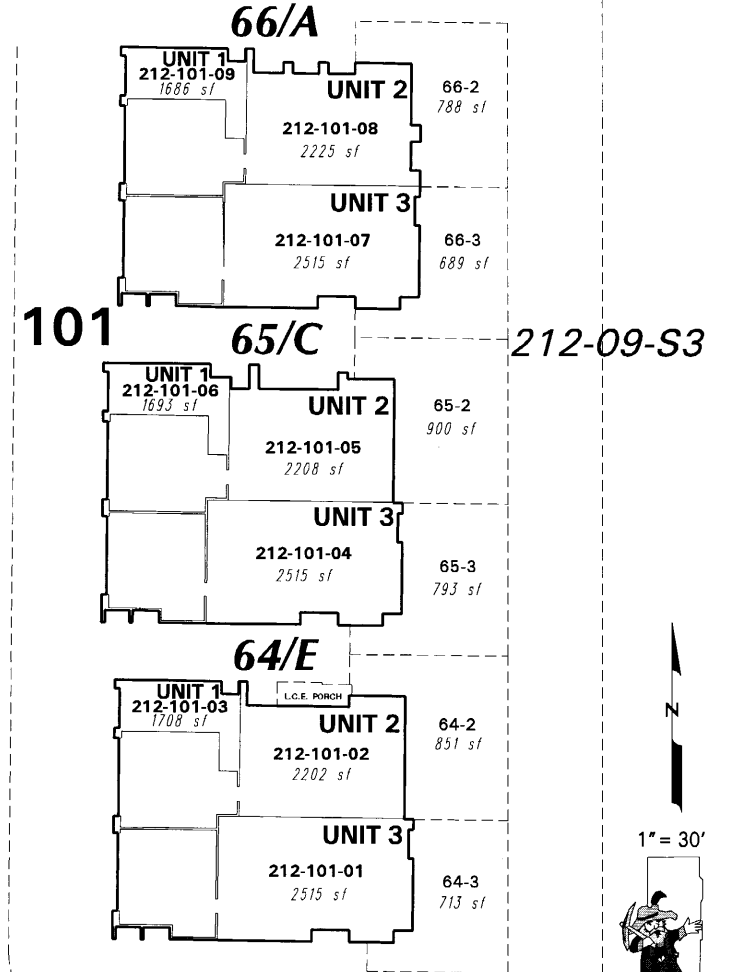
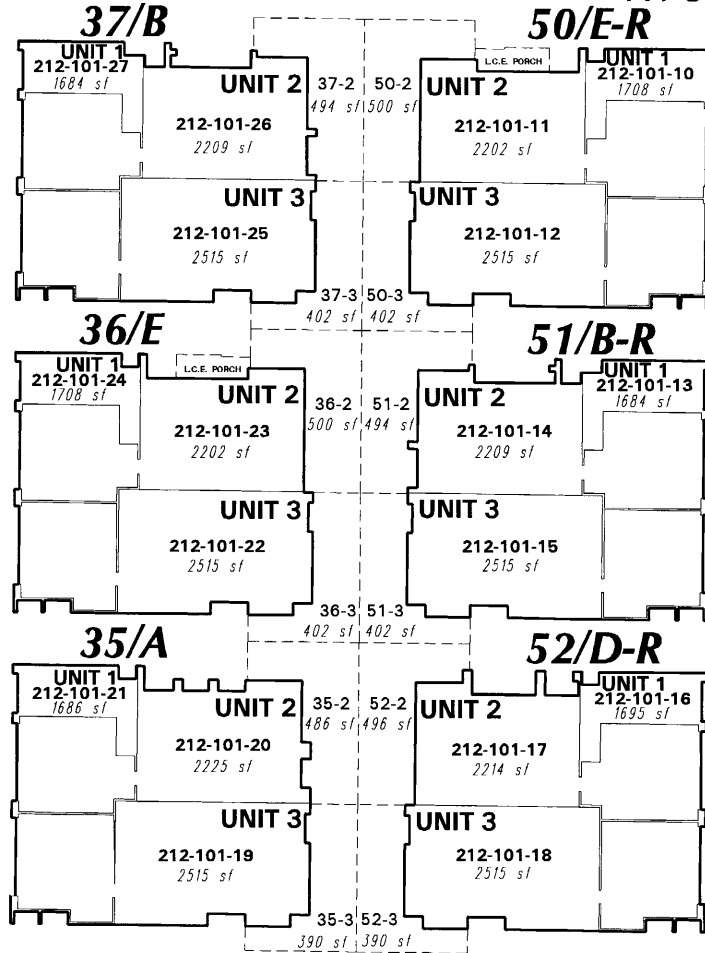
212-09-S8

212-09-S3

212-09-S9

ALLEY G

ROLLING KNOLL STREET



1/D = BUILDING NUMBER/BUILDING TYPE

2/B-R = BUILDING NUMBER/BUILDING TYPE (REVERSED)

1-2 = PRIVATE YARD L.C.E. NUMBER  
ALLEY = PRIVATE ACCESS, UTILITY, AND DRAINAGE EASEMENT  
L.C.E. = LIMITED COMMON ELEMENT  
SEE PAGES 212-09 TO 212-09-S2 FOR BUILDING TYPES AND DIMENSIONS

SOUTHWESTERN STREET

212-09-S3

212-10

This area previously shown on 039-11

NOTE: Areas of parcels which are less than 2 acres are shown in square feet.

Drawn by NLH 07/23/07  
Revised

NOTE: This map is prepared for the use of the Washoe County Assessor for assessment and illustrative purposes only. It does not represent a survey of the premises. No liability is assumed as to the sufficiency or the accuracy of the data delineated hereon.

Office of Washoe County Assessor, Nevada - Joshua G. Wilson