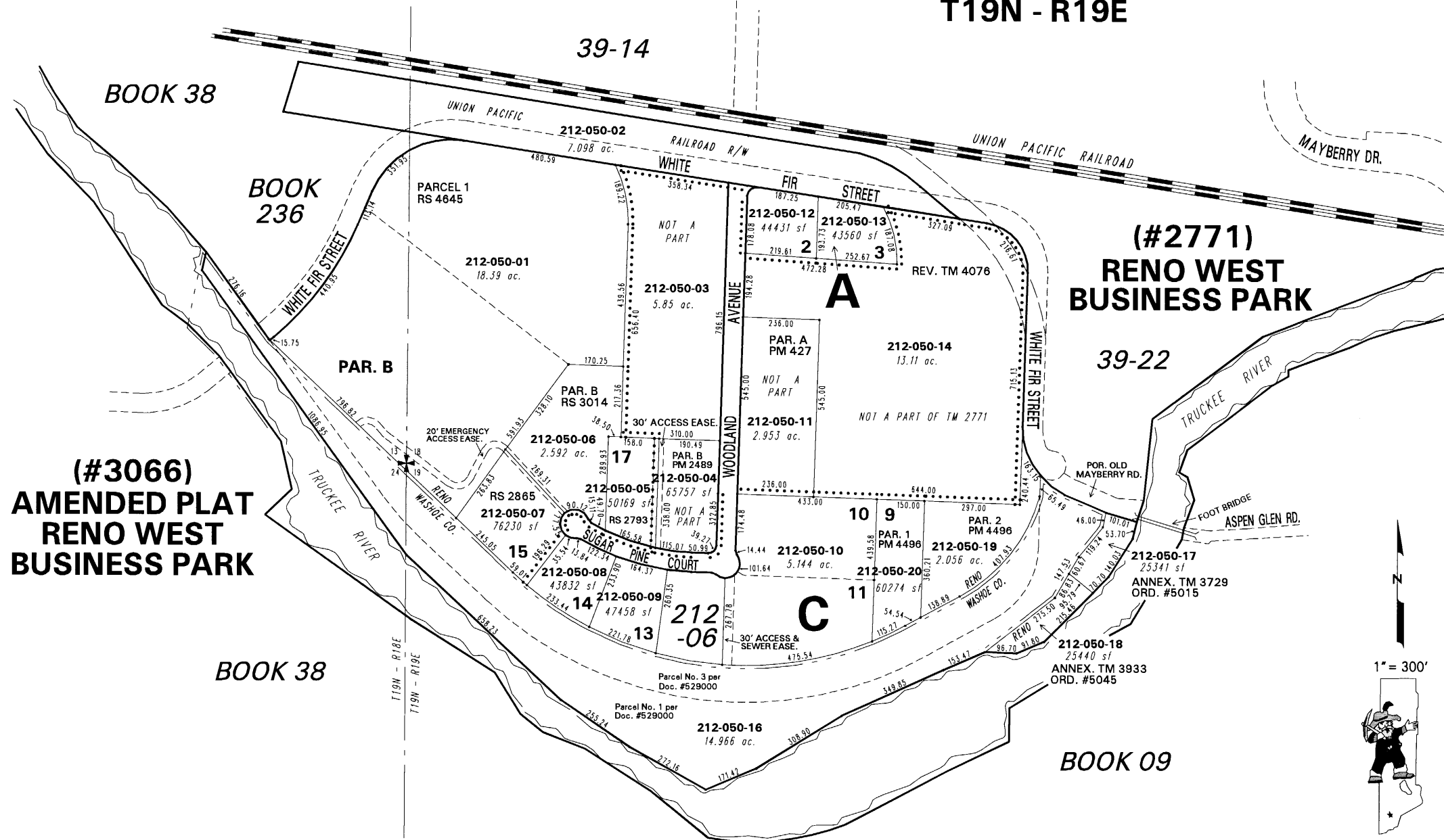


PORTION OF SECTIONS 13 & 24
T19N - R18E

PORTION OF SECTIONS 18 & 19
T19N - R19E



(#3066)
AMENDED PLAT
RENO WEST
BUSINESS PARK

(#2771)
RENO WEST
BUSINESS PARK



1" = 300'



NOTE: This map is prepared for the use of the Washoe County Assessor for assessment and illustrative purposes only. It does not represent a survey of the premises. No liability is assumed as to the sufficiency or the accuracy of the data delineated hereon.

Office of Washoe County Assessor, Nevada - Robert W. McGowan

This area previously shown on 39-24

NOTE: Areas of parcels which are less than 2 acres are shown in square feet.

Drawn by	KSB 03/25/06
Revised	KSB 3/28/06 TWT 4/18/06