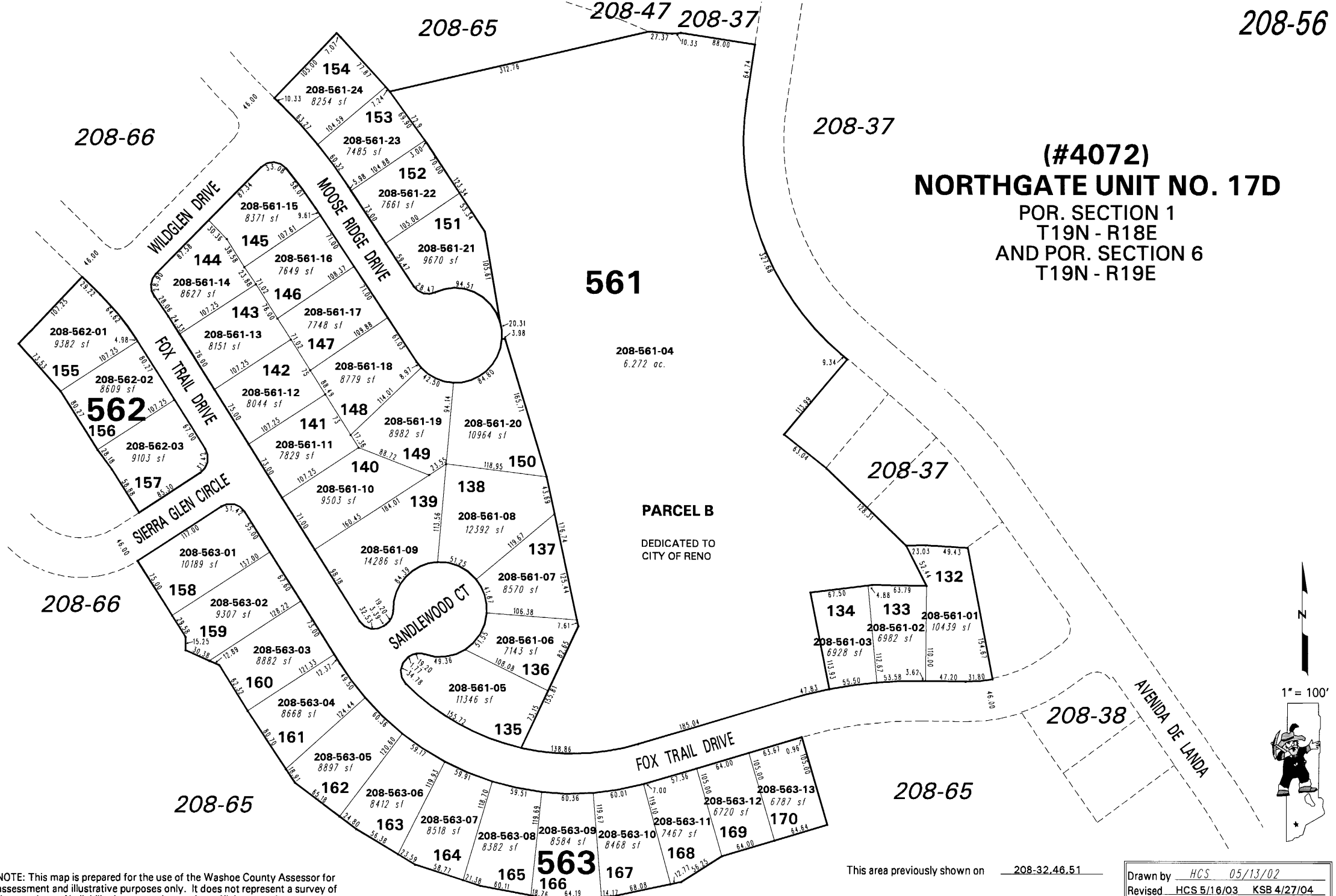


**(#4072)**  
**NORTHGATE UNIT NO. 17D**  
POR. SECTION 1  
T19N - R18E  
AND POR. SECTION 6  
T19N - R19E

**561**

208-561-04  
6.272 ac.

**PARCEL B**  
DEDICATED TO  
CITY OF RENO



NOTE: This map is prepared for the use of the Washoe County Assessor for assessment and illustrative purposes only. It does not represent a survey of the premises. No liability is assumed as to the sufficiency or the accuracy of the data delineated hereon.

Office of Washoe County Assessor, Nevada - Robert W. McGowan

This area previously shown on 208-32.46.51

NOTE: Areas of parcels which are less than 2 acres are shown in square feet.

Drawn by HCS 05/13/02  
Revised HCS 5/16/03 KSB 4/27/04  
KSB 5/01/06