

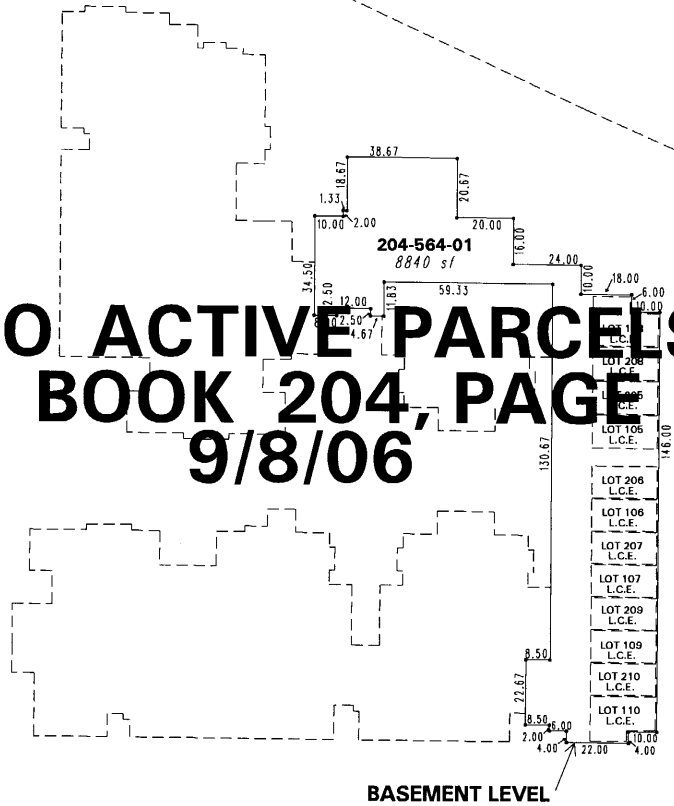
# HIGHLAND PLACE ACTIVE SENIOR CONDOMINIUMS A CONDOMINIUM SUBDIVISION

POR. OF THE SW 1/4 OF SEC. 5  
T19N - R19E

ROBB DRIVE

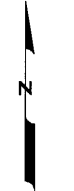
WEST SEVENTH STREET

**NO ACTIVE PARCELS  
SEE BOOK 204, PAGE 56  
9/8/06**



### BASEMENT LEVEL AREA TOTALS

BASEMENT LEVEL COMMON ELEMENT	5574 SQ.FT.
LIMITED COMMON ELEMENT	3266 SQ.FT.



1" = 50'



NOTE: This map is prepared for the use of the Washoe County Assessor for assessment and illustrative purposes only. It does not represent a survey of the premises. No liability is assumed as to the sufficiency or the accuracy of the data delineated hereon.

Office of Washoe County Assessor, Nevada - Robert W. McGowan

This area previously shown on 204-20

NOTE: Areas of parcels which are less than 2 acres are shown in square feet.

Drawn by	HCS 9/28/01
Revised	PK 9/8/06