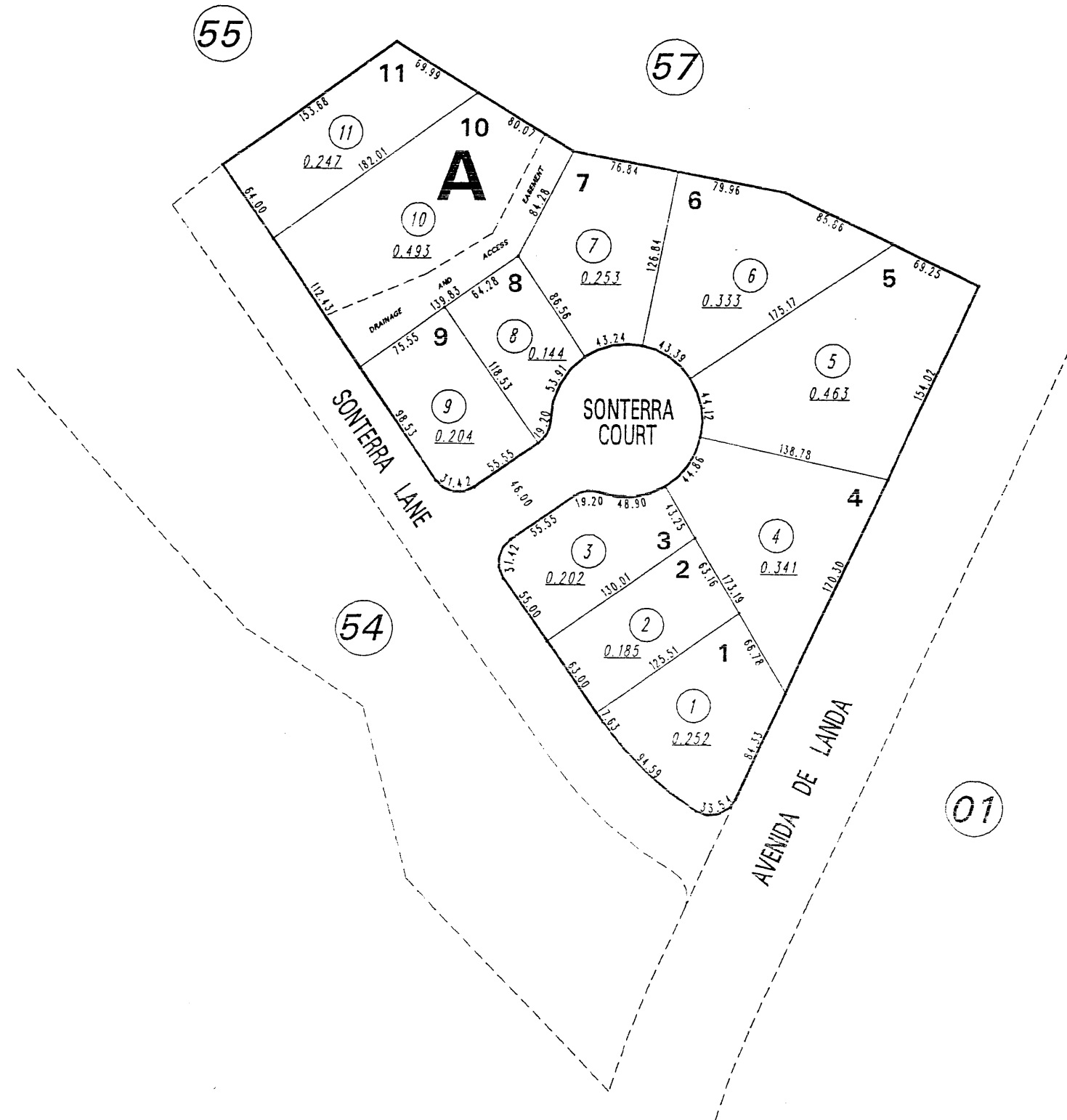


# NORTHGATE UNIT NO. 15B (#3343)

POR. W 1/2 SEC. 7, T19N - R19E



NOTE: This map is prepared for the use of the Washoe County Assessor for assessment and illustrative purposes only. It does not represent a survey of the premises. No liability is assumed as to the sufficiency or the accuracy of the data delineated hereon.

Office of Washoe County Assessor, Nevada - Robert W. McGowan

NOTE: STREETS PARCELED ON 200-54

This area previously shown on 200-01

NOTE:  
ASSESSOR'S BLOCK NUMBERS SHOWN IN ELLIPSES  
ASSESSOR'S PARCEL NUMBERS SHOWN IN CIRCLES

Drawn by <u>GZ 3/12/97</u>
Revised <u>KS 11/24/99</u>