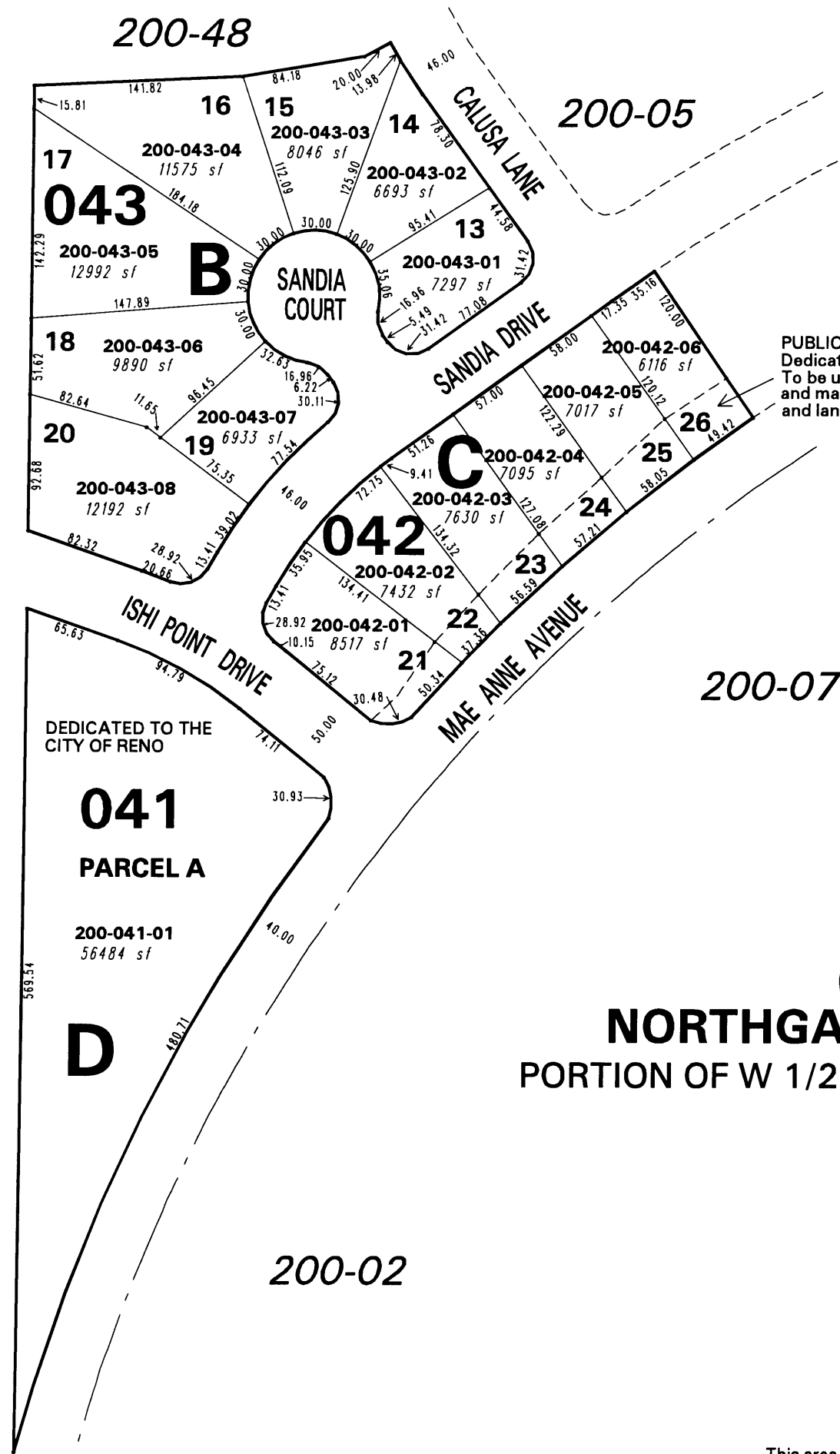


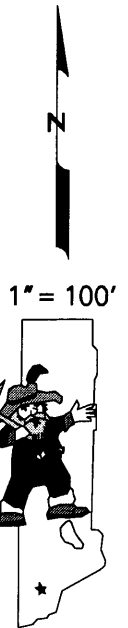
BOOK 208-15

BOOK 208-35



**PUBLIC IMPROVEMENT EASEMENT**  
 Dedicated to the City of Reno.  
 To be used for the construction  
 and maintenance of a sound wall  
 and landscape area.

**(#3109)**  
**NORTHGATE UNIT NO. 14B**  
 PORTION OF W 1/2 SECTION 7, T19N - R19E



NOTE: This map is prepared for the use of the Washoe County Assessor for assessment and illustrative purposes only. It does not represent a survey of the premises. No liability is assumed as to the sufficiency or the accuracy of the data delineated hereon.

Office of Washoe County Assessor, Nevada - Robert W. McGowan

This area previously shown on \_\_\_\_\_

NOTE: Areas of parcels which are less than 2 acres are shown in square feet.

Drawn by	CFB 2/24/95
Revised	GZ 9/25/97 DSR 2/10/00
HCS 10/10/02	