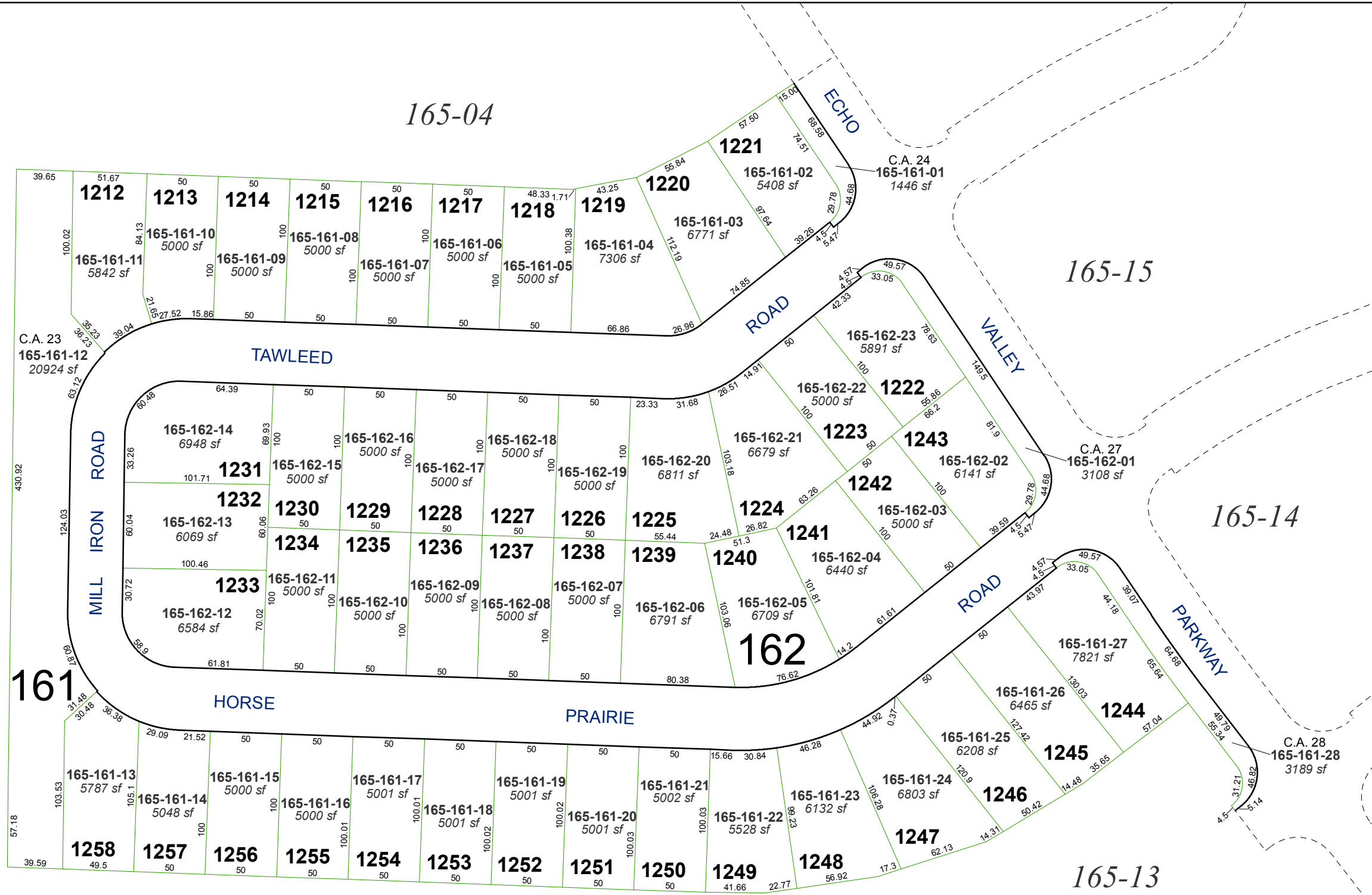


BOOK
161



165-13

(#4919)
BELLA VISTA VILLAGE A - UNIT 2

A POR. OF THE SW 1/4 OF SEC. 3,
 & A POR. OF THE NW 1/4 OF SEC. 10,
 T18N - R20E

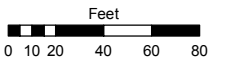
C.A. = COMMON AREA

Assessor's Map Number

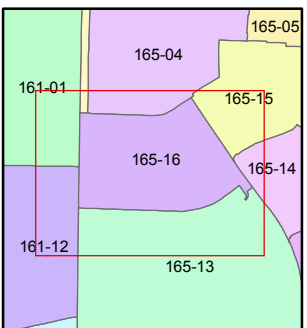
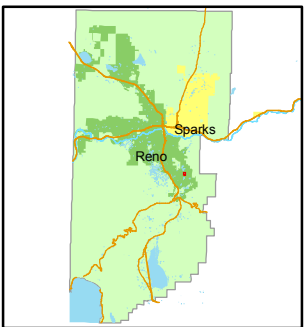
165-16

STATE OF NEVADA
WASHOE COUNTY
ASSESSOR'S OFFICE
 Joshua G. Wilson, Assessor

1001 East Ninth Street
 Building D
 Reno, Nevada 89512
 (775) 328-2231



1 inch = 80 feet



created by: NLH 6/26/2009

last updated: _____

area previously shown on map(s)

165-01

NOTE: This map was prepared for the use of the Washoe County Assessor for assessment and illustrative purposes only. It does not represent a survey of the premises. No liability is assumed as to the sufficiency or accuracy of the data delineated hereon.