

Assessor's Map Number

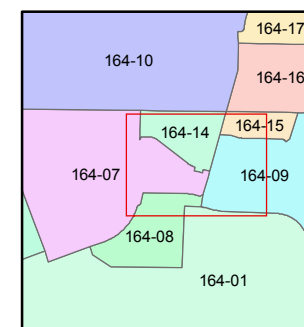
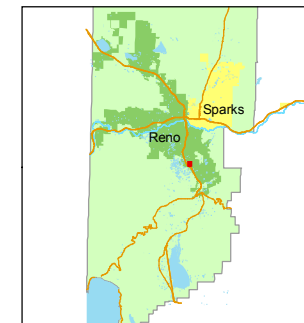
**164-07-S3**

STATE OF NEVADA  
**WASHOE COUNTY**  
**ASSESSOR'S OFFICE**  
Joshua G. Wilson, Assessor

1001 East Ninth Street  
Building D  
Reno, Nevada 89512  
(775) 328-2231



1 inch = 50 feet



created by: TWT 9/2/2009

last updated: \_\_\_\_\_

area previously shown on map(s)

022-20-S4

NOTE: This map was prepared for the use of the Washoe County Assessor for assessment and illustrative purposes only. It does not represent a survey of the premises. No liability is assumed as to the sufficiency or accuracy of the data delineated hereon.

BLVD.

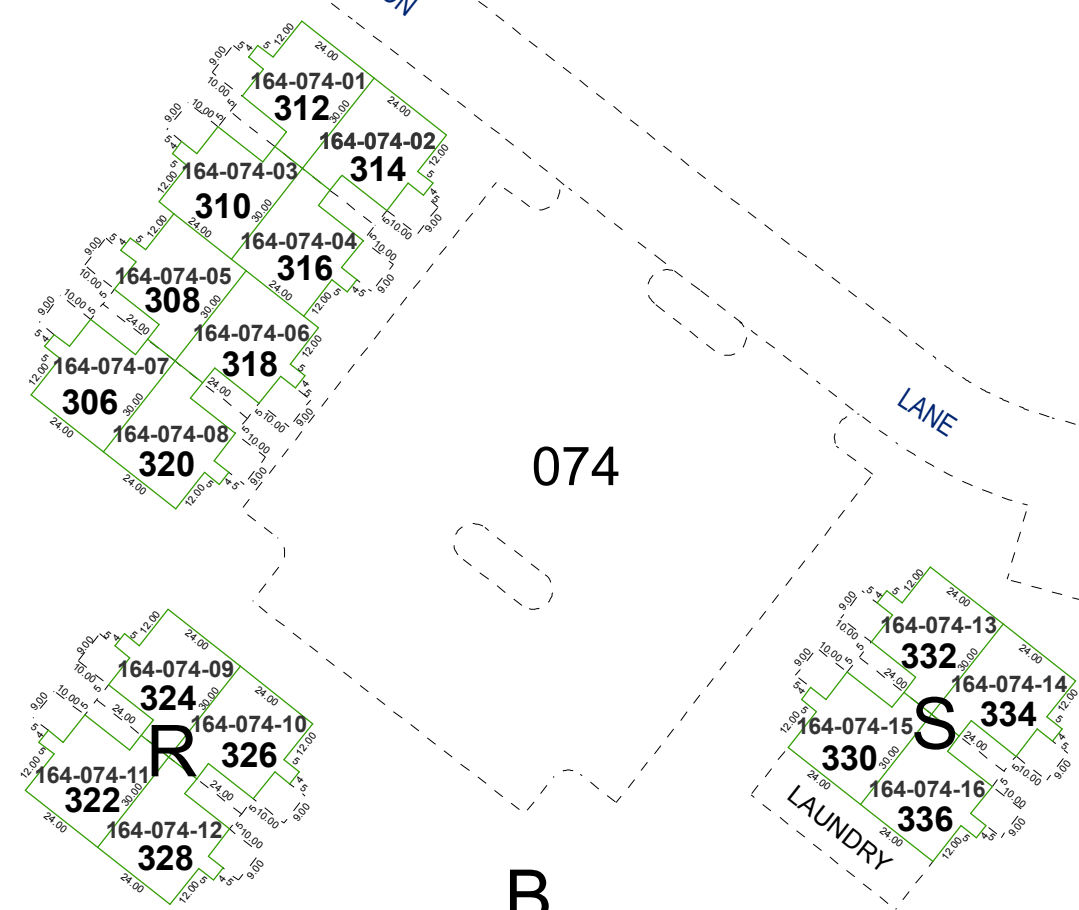
PATRIOT

KINGSTON

LANE

BLUESTONE DRIVE

PORTMAN AVENUE



# #2209 WATERFORD PARK UNIT 2

## A CONDOMINIUM PROJECT 2ND FLOOR

ENTIRE CONDOMINIUM SHOWN ON PGS. 164-06, 07, 08 & 09