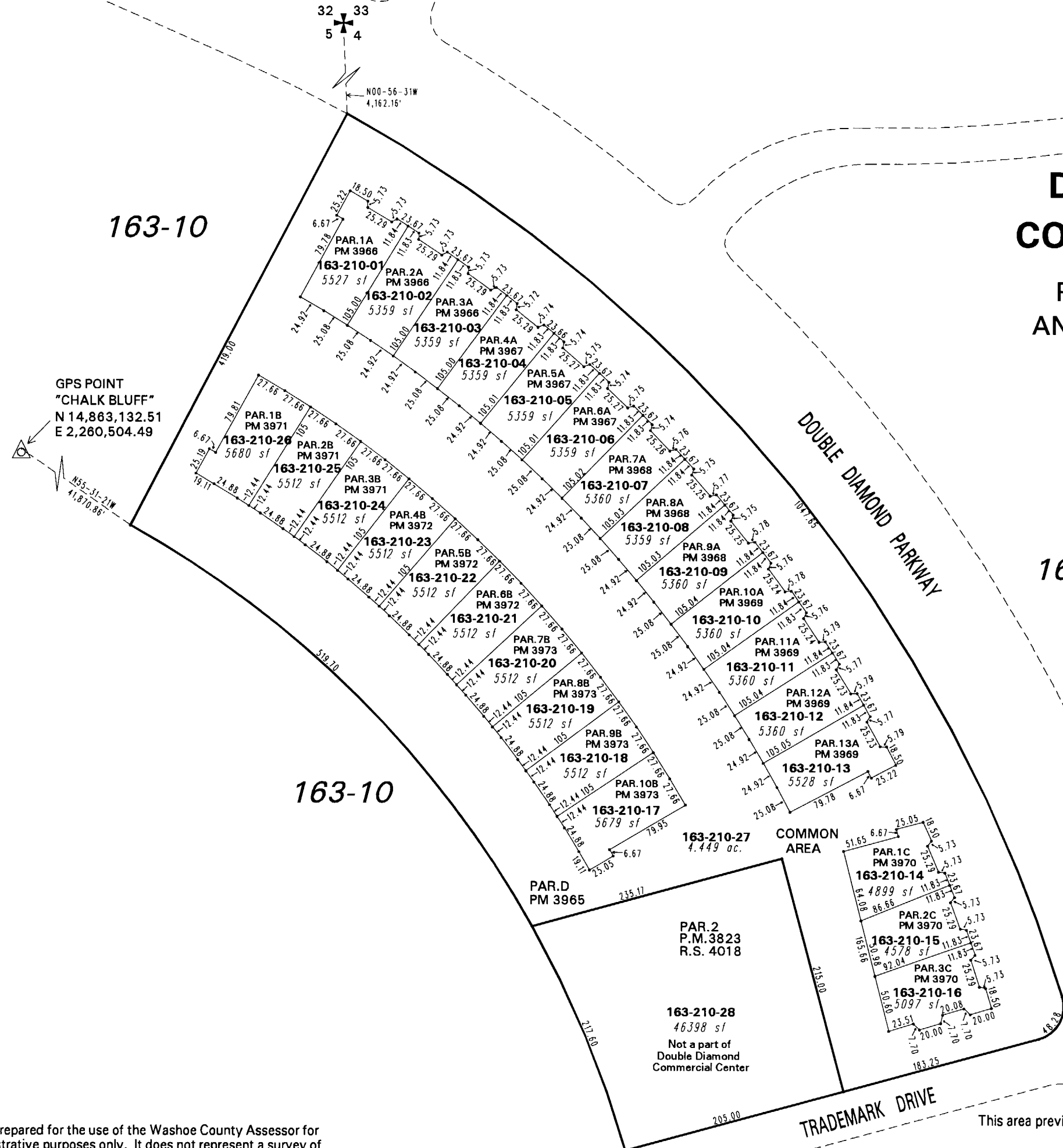


DOUBLE DIAMOND COMMERCIAL CENTER

POR. SW 1/4 SECTION 4
AND POR. SE 1/4 SECTION 5
T18N - R20E



163-10

163-09

163-10

163-02

NOTE: This map is prepared for the use of the Washoe County Assessor for assessment and illustrative purposes only. It does not represent a survey of the premises. No liability is assumed as to the sufficiency or the accuracy of the data delineated hereon.

Office of Washoe County Assessor, Nevada - Robert W. McGowan

This area previously shown on 160-62, 160-86

NOTE: Areas of parcels which are less than 2 acres are shown in square feet.

Drawn by HCS 03/13/03
Revised HCS 3/13/03* CFB 3/4/2006