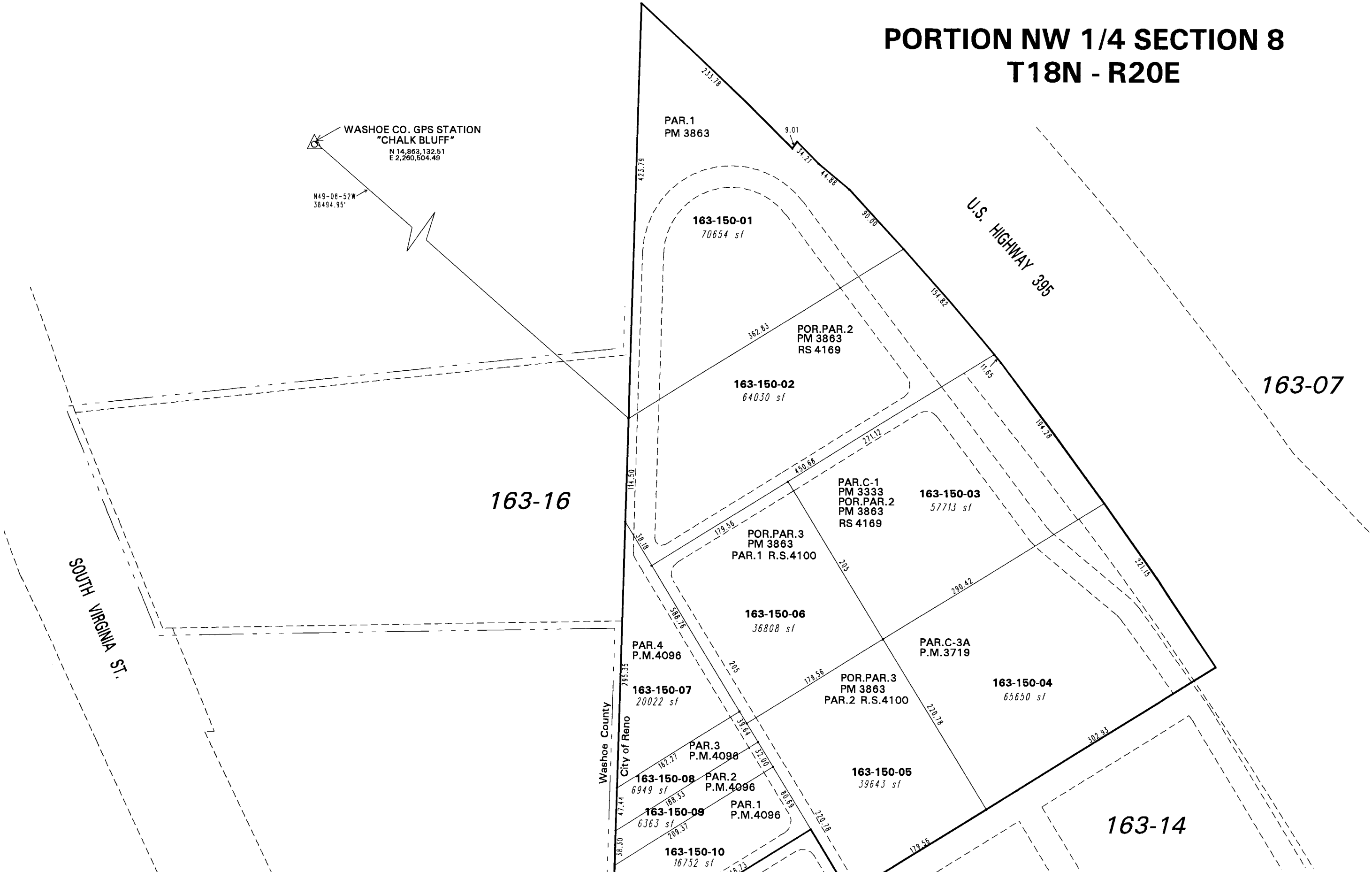


PORTION NW 1/4 SECTION 8 T18N - R20E

WASHOE CO. GPS STATION
"CHALK BLUFF"
N 14,863,132.51
E 2,260,604.48
N49-08-52W
36494.95'



NOTE: This map is prepared for the use of the Washoe County Assessor for assessment and illustrative purposes only. It does not represent a survey of the premises. No liability is assumed as to the sufficiency or the accuracy of the data delineated hereon.

Office of Washoe County Assessor, Nevada - Robert W. McGowan

This area previously shown on 160-27, 160-28

NOTE: Areas of parcels which are less than 2 acres are shown in square feet.

Drawn by CFB 3/3/2006
Revised _____
