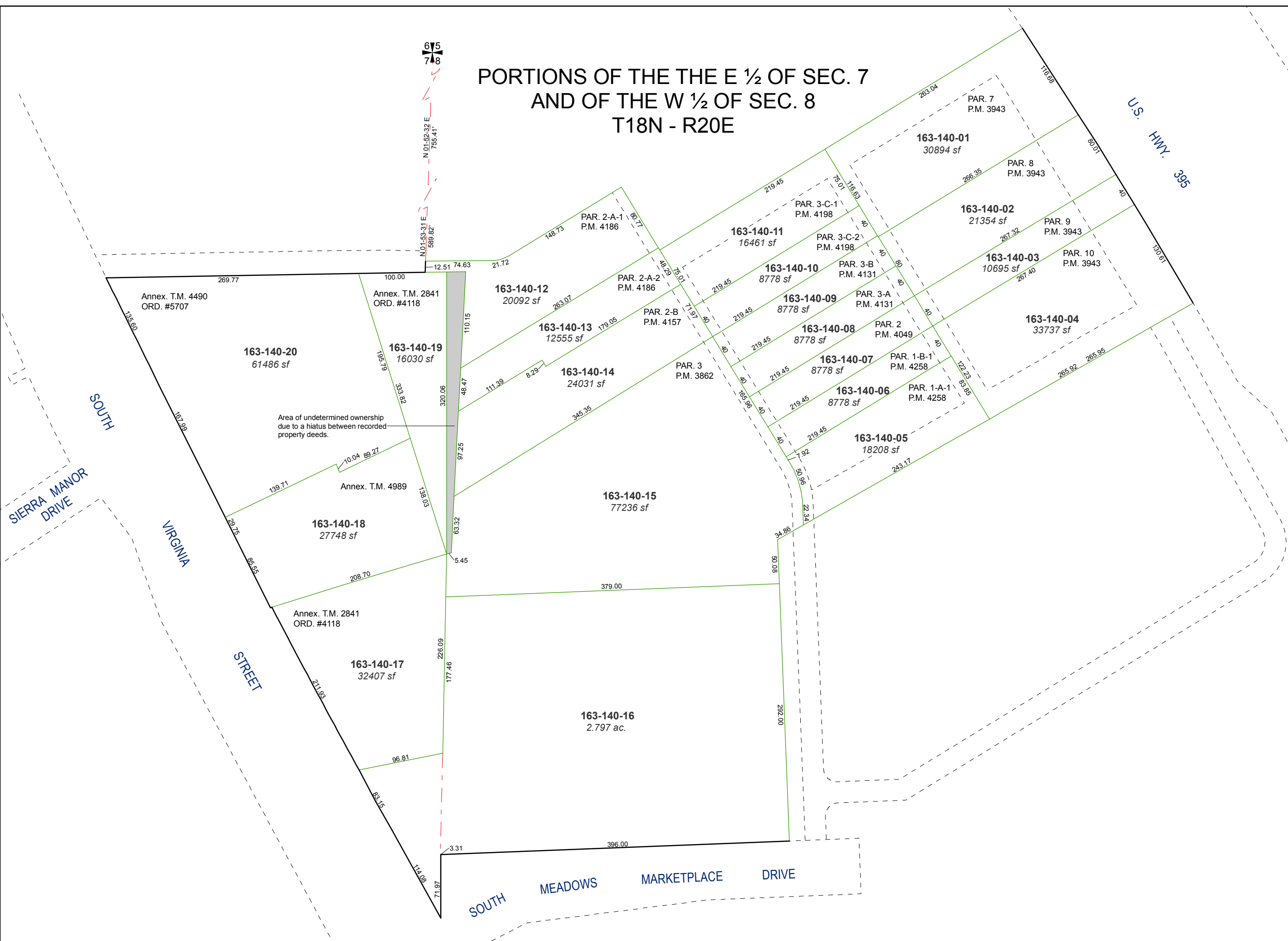


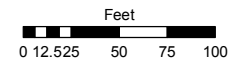
PORTIONS OF THE THE E 1/2 OF SEC. 7
AND OF THE W 1/2 OF SEC. 8
T18N - R20E



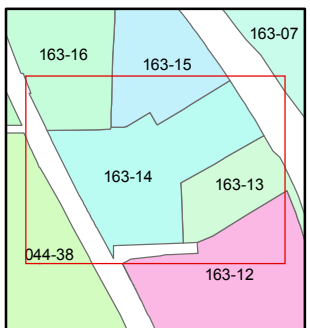
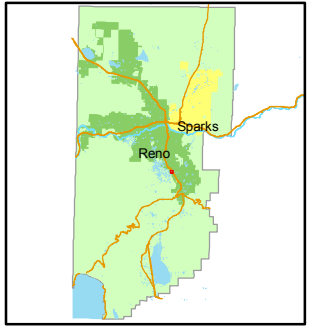
Assessor's Map Number
163-14

STATE OF NEVADA
WASHOE COUNTY
ASSESSOR'S OFFICE
Joshua G. Wilson, Assessor

1001 East Ninth Street
Building D
Reno, Nevada 89512
(775) 328-2231



1 inch = 100 feet



created by: NLH 7/20/2011

last updated: _____

area previously shown on map(s)
022-02, 016-34, 160-09, 27 & 28

NOTE: This map was prepared for the use of the Washoe County Assessor for assessment and illustrative purposes only. It does not represent a survey of the premises. No liability is assumed as to the sufficiency or accuracy of the data delineated hereon.