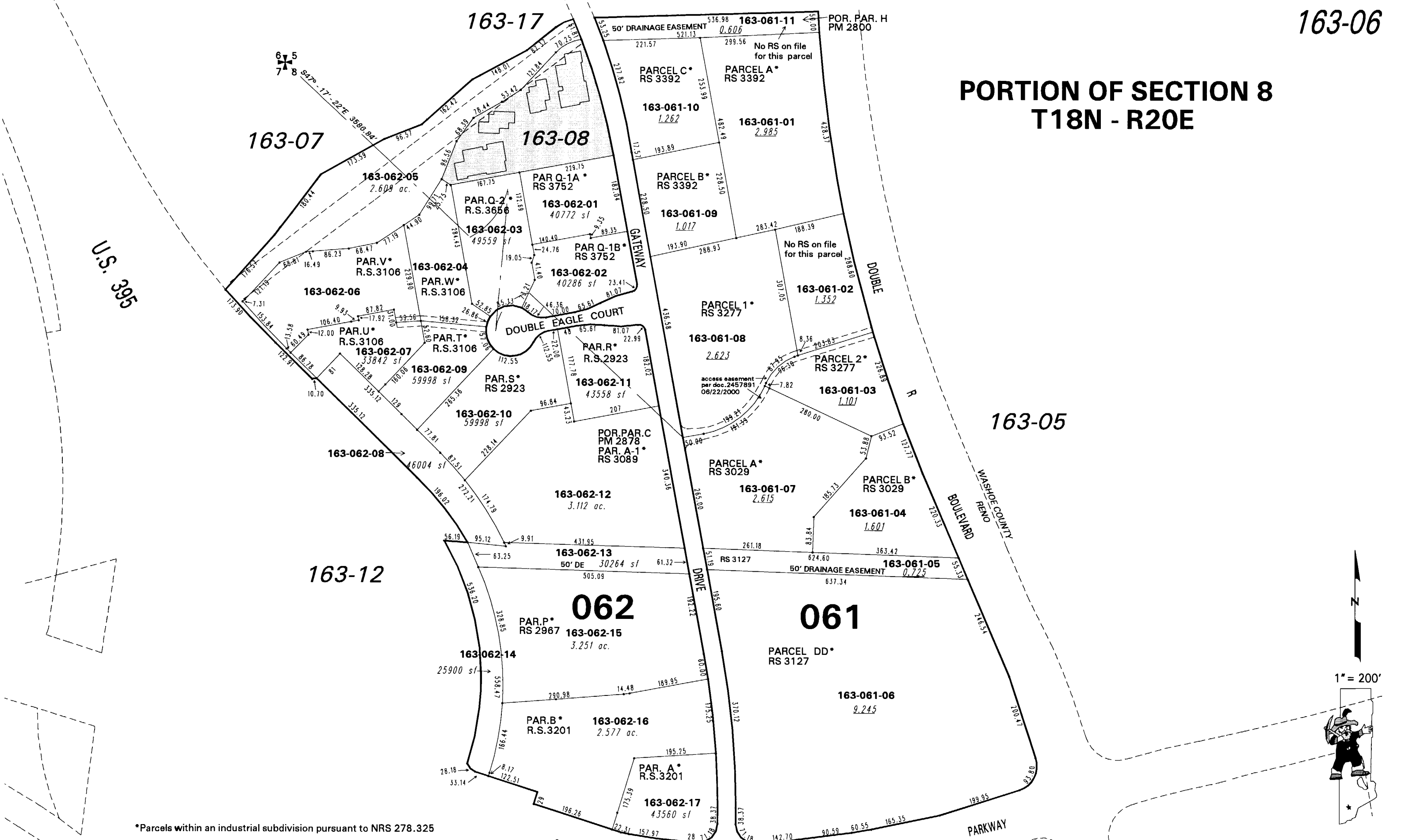


PORTION OF SECTION 8 T18N - R20E



*Parcels within an industrial subdivision pursuant to NRS 278.325

NOTE: This map is prepared for the use of the Washoe County Assessor for assessment and illustrative purposes only. It does not represent a survey of the premises. No liability is assumed as to the sufficiency or the accuracy of the data delineated hereon.

160-04 SOUTH MEADOWS
Office of Washoe County Assessor, Nevada - Robert W. McGowan

This area previously shown on 160-24,25,27

NOTE: Areas of parcels which are less than 2 acres are shown in square feet.

Drawn by	CFB 2/9/2006
Revised	

